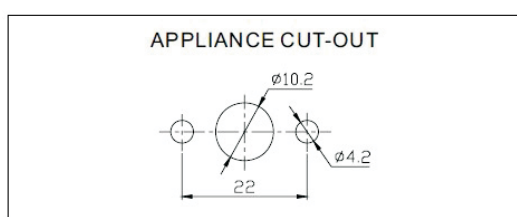
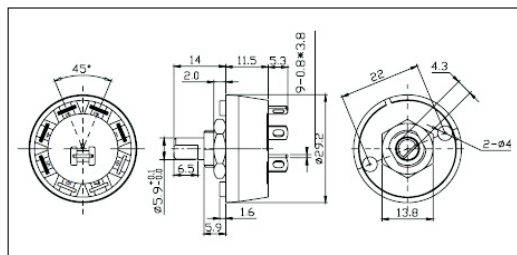


Switch

Rotary switches* Coding switches series

KLS7-SRA10



VII

◆ PART NUMBER

A10 - 5 0 A A - 2

Series Function Type Cover Terminal Shaft

Function(1)		
Function	Version	Code
Two Switch		2
Three Switch		3
Four Switch		4
Five Switch		5
Six Switch		6
Seven Switch		7
Eight Switch		8
Nine Switch		9
Ten Switch		10

Terminal(4)		
Terminal	Version	Code
Solder Terminal with Elliptic Hole		A
Solder Terminal with Quadrate Hole		B

Type(2)		
Type	Version	Code
Without Reset Function		0
With Reset Function		1

Cover(3)		
Cover	Version	Code
Circular Bolt		A
Circular Bolt with two Plane		B
Circular Bolt with One Plane		C

Shaft(5)		
Shaft	Version	Code
Shaft 1		1
Shaft 2		2
Shaft 5		3

Rotary switches* Coding switches series

OUTPUT CODES

PIN NO	POSITION															
	0	1	2	3	4	5	6	7	8	9	A	B	C	D	E	F
1	○	●	○	●	○	●	○	●	○	●	○	●	○	●	○	●
2	○	○	●	●	○	○	●	●	○	○	●	●	○	○	●	●
4	○	○	○	○	●	●	●	●	○	○	○	○	●	●	●	●
8	○	○	○	○	○	○	○	○	●	●	●	●	●	●	●	●

● Real Code
Rotor color: Yellow(3:3)

○ Complement Code
Rotor color: Red(3:3)

ORDER INFORMATION

Switch

Rotary switches* Coding switches series

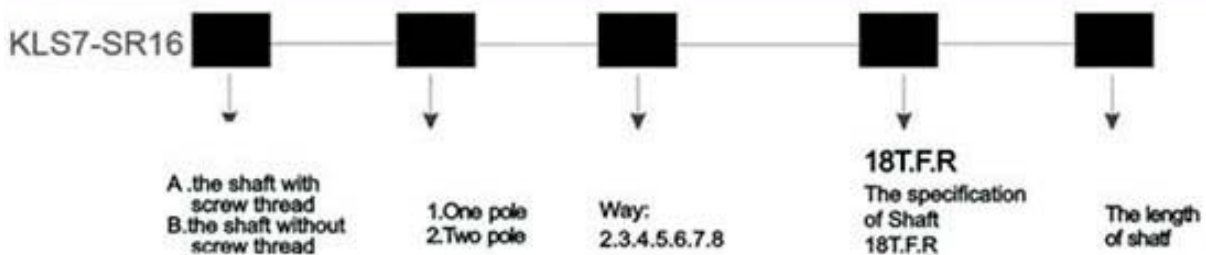
KLS7-SR16/16mm series

SPECIFICATIONS

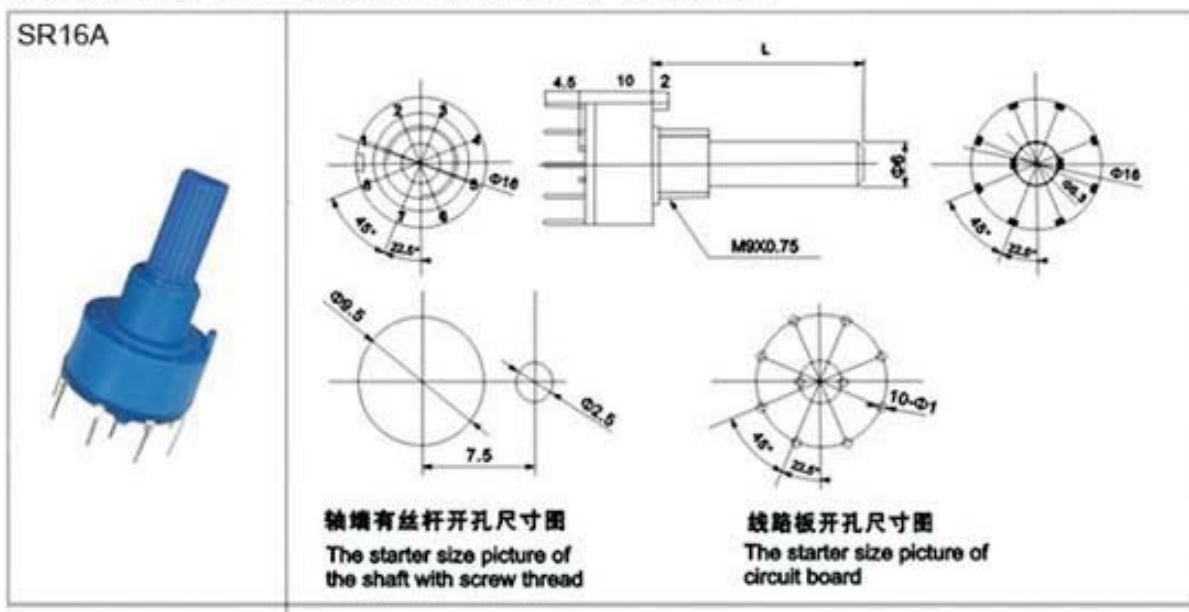
Temperature: -20°C-85°C
Max. rated power : 60VDC 0.30A
Contact resistance : Max. 50M Ohm
Insulation resistance : 100M Ohm Min. 500VDC
Withstand voltage : 500V AC for 1 Min.
Terminal strength: 5N for 1 Min.
Rotating Torque: 0.50~1.0N
Mechanical life and rated power : 10000 cycles 100M Ohm Max.



Ordering information:



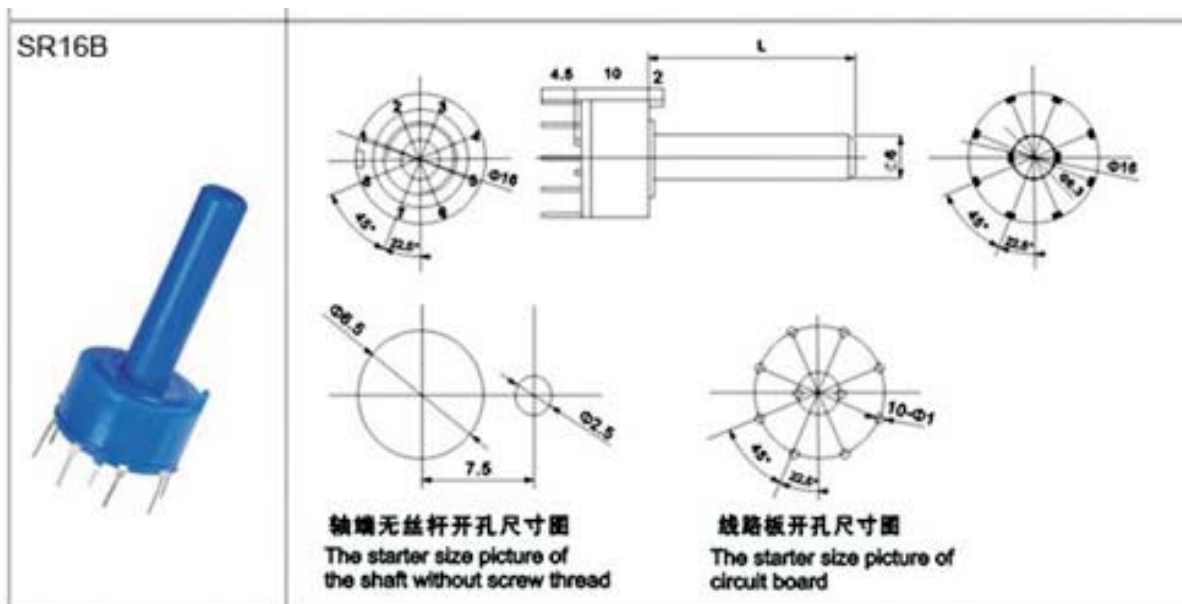
Model to choose : SR16A / SR16B



Switch

Rotary switches* Coding switches series

KLS7-SR16/16mm series



Shaft to choose : 18T / F / R

18T		L	L ₁	L ₂
		15	6.5	8.5
		20	6.5	13.5
		25	6.5	18.5
F		L	L ₁	F
		15	6.5	8.5
		20	6.5	13.5
		25	6.5	18.5
R		L	L ₁	L ₂
		15	6.5	8.5
		20	6.5	13.5
		25	6.5	18.5

Switch

Rotary switches* Coding switches series

KLS7-SR26/26mm series

VII

Appliance performance

working Vlotage	AC 125V
Rated current	0.30A
Contact resistance	Less than 0.02 Ohm
Insulation resistance	DC 500V-100m Ohm Min
Limiting Vlotage	AC 500V 1 min.

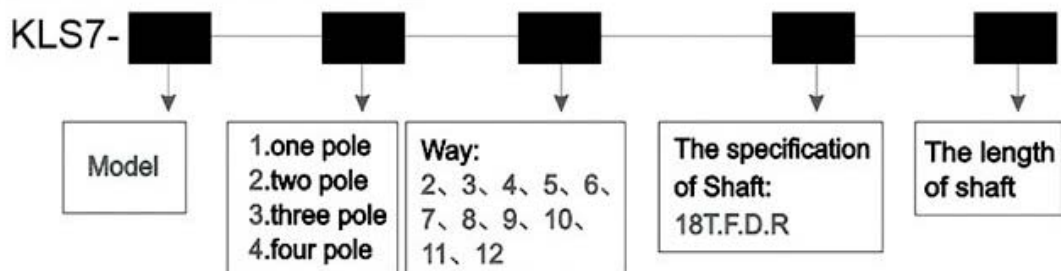
Mechincal property

Totation torque	0.5~2.5kgf.cm
Shatf stop strength	5kgf.cm
Mechanical endurance	More than 10000 cycles



ORDER INFORMATION

Ordering information :



Rotary switches* Coding switches series

SR26A

SR26B

轴端安装尺寸
The fitting size of shaft end

轴端安装尺寸
The fitting size of shaft end

线路板开孔尺寸
The tapping size of circuit board

轴端安装尺寸
The fitting size of shaft end

轴端安装尺寸
The fitting size of shaft end

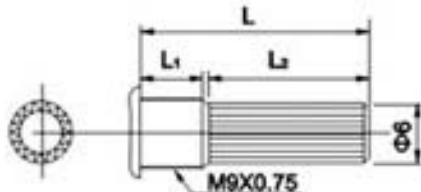
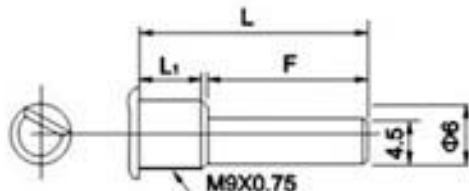
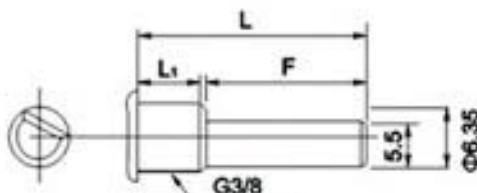
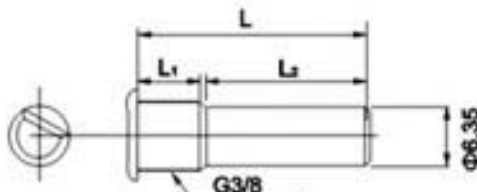
线路板开孔尺寸
The tapping size of circuit board

軸端安裝尺寸
The fitting size of shaft end

Switch

Rotary switches* Coding switches series

Shaft to choose : 18T / F / D / R

18T		L	15	20	25			
		L1	7	7	7			
		L2	8	13	18			
F		L	15	20	25			
		L1	7	7	7			
		F	8	13	18			
D		L	15	18	21	25	29	38
		L1	7	7	7	7	7	7
		F	8	11	14	18	21	31
R		L	15	18	21	25	29	38
		L1	7	7	7	7	7	7
		L2	8	11	14	18	21	31