

Connector

FFC/FPC Series

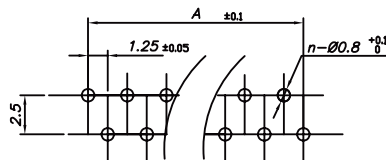
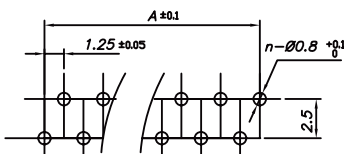
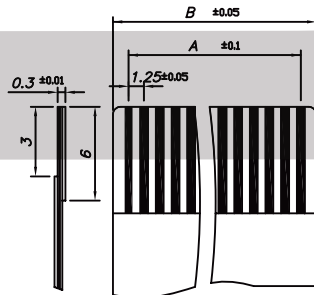
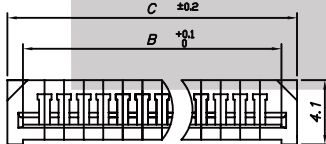
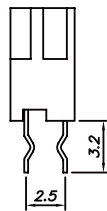
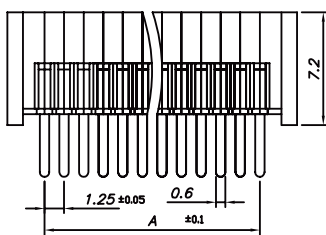
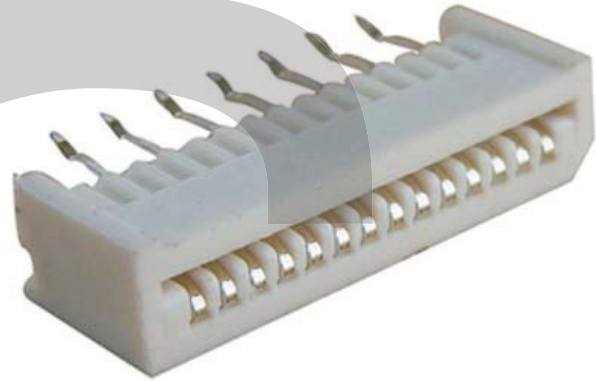
KLS1-220 FFC/FPC CONNECTOR 1.25mm Straight Pin Type

Electrical Characteristics:

Current Rating: 1 AMP
 Insulator Resistance: 5000MΩmin. at DC 500V
 Contact Resistance: 20mΩmax. at DC 100mA
 Operating Temperature: -45°C~+105°C

Material:

Housing: PBT UL94V-0
 Contacts: Phosphor Bronze
 Plating: Tin plated: 100u" over 50u" nickel



Positive needle

Anti-needle

Poles	A	B	C
4	3.75	6.25	8.55
5	5	7.5	9.8
6	6.25	8.75	11.05
7	7.5	10	12.3
8	8.75	11.25	13.55
9	10	12.5	14.8
10	11.25	13.75	16.05
11	12.5	15	17.3
12	13.75	16.25	18.55
13	15	17.5	19.8
14	16.25	18.75	21.05
15	17.5	20	22.3
16	18.75	21.25	23.55
17	20	22.5	24.8
18	21.25	23.75	26.05
19	22.5	25	27.3
20	23.75	26.25	28.55
21	25	27.5	29.8
22	26.25	28.75	31.05
23	27.5	30	32.3
24	28.75	31.25	33.55
25	30	32.5	34.8
26	31.25	33.75	36.05
27	32.5	35	37.3
28	33.75	36.25	38.55
29	35	37.5	39.8
30	36.25	38.75	41.05
31	37.5	40	42.3
32	38.75	41.25	43.55
33	40	42.5	44.8
34	41.25	43.75	46.05
35	42.5	45	47.3

ORDER INFORMATION

Product No.: KLS1-220-XX-S-W-P

Pos. No. _____
 FFC/FPC CONNECTOR 1.25mm Series

Pin direction: P-Positive needle
 Base color: B-Black W-White
 Tail Style: S=Straight Pin R=Right Pin
 Number of Contacts _____

A-Anti-needle