

Switch

Micro Switch Series

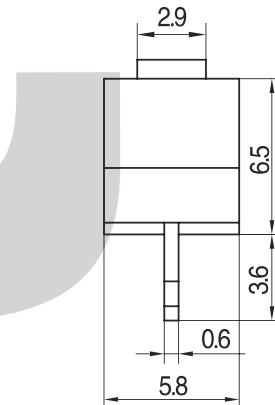
KLS7-KW10 Micro Switch Series

Action sensitive subminiature switch
Mini-type, big current. Characteristic: small contact gap, quick action, high sensitivity and small operating travel
Long life
A variety of contact terminals
A variety of levers
Widely used in home appliance, audio video device, computer, office automation equipment, communication equipment, etc.
Withstand Voltage : AC250V (50Hz) Min.
Temperature : -40°C~+70°C

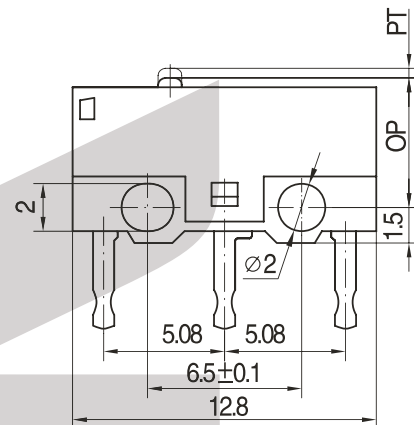
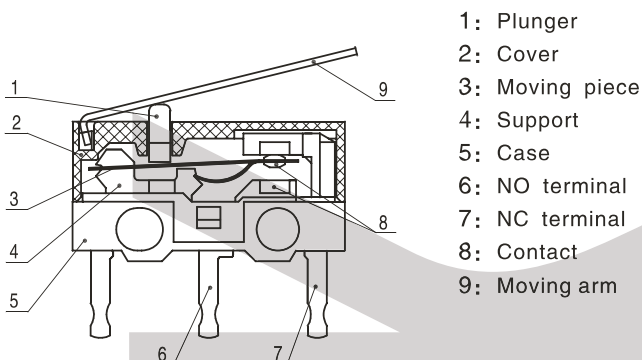


Specifications

Item	Value
Operating speed	1mm ~ 500mm/s (Related with actuator forms)
Operating frequency	Mechanical 60 cycles/min; Electrical 25cycles/min
Insulation resistance	≥ 100MΩ (500VDC)
Contact resistance	OF>0.75N: ≤30mΩ (see note) OF≤0.75N: ≤50mΩ (see note) KW10-D、E、F型: ≤100mΩ (見注)
Test voltage	Between terminals of the same polarity
	Between current-carrying metal parts and ground(case), and between each terminal and non-current-carrying metal parts.
Vibration resistance	10 ~ 55Hz, 1.5mm Double amplitude
Shock resistance	Malfunction:300m/s²(approx.30G)max
Life expectancy	Mechanical ≥ 1,000,000 cycles Electrical ≥ 10,000cycles
Weight	Approx. 0.6g(No lever)
Safety approvals	UL、CUL、TUV、CE、EK、CQC



Internal configuration drawing



Switch

Micro Switch Series

KLS7-KW10 Micro Switch Series

ORDER INFORMATION

VII

KLS7-KW10 - X X X X X - (X)

Part Number
Micro Switch Type

Rating:

No mark: 3 (0.5) A250V / 3A125VAC
 C : 1 (0.5) A250V / 1A125VAC
 D : 0.5 (0.2) A250V / 0.5A125VAC
 E : 0.3 (0.1) A250V / 0.3A125VAC
 F : 0.1 (0.05) A250V / 0.1A125VAC

Additional spec numbers apply to:
 when used not standard parts such
 as not standard terminal
 when customer has particular operating
 value or other require ments.

Operating force
 045: 0.45N
 075: 0.75N
 150: 1.5N
 250: 2.5N
 Note: if it is not standard operating force, indicate
 with the upper limit

	Circuit
Z: SPDT	
T: SPST-NO	
D: SPST-NC	

Terminal Types
 F: Solder terminal
 G: Long solder terminal
 P: PCB terminal
 L: Left side PCB terminal
 R: Right side PCB terminal
 S: Self-clinching PCB terminal
 Y: Not standard terminal

Actuator forms
 0: No lever
 1: Short lever
 2: Long lever
 3: Middle lever
 5: Roller
 6: Long arc lever
 8: Short arc lever
 □: Not standard lever

◆ Terminal dimensions

P	G	S	
PCB terminal	Long solder terminal	Self-clinching PCB terminal	
L	R	F	H
Left side PCB terminal	Right side PCB terminal	Solder terminal	Minitype solder terminal