
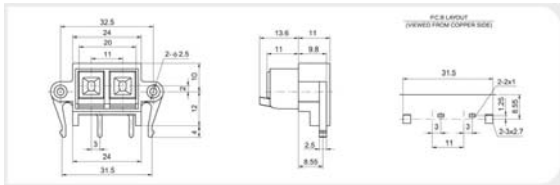

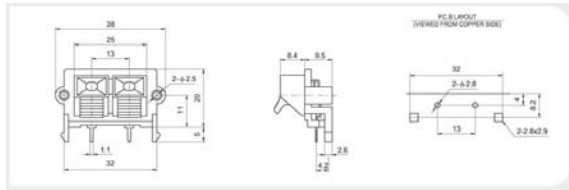

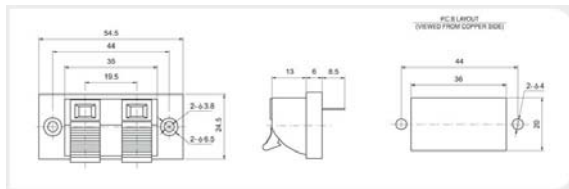











Audio and video Accessories

Loudspeaker Terminals Series

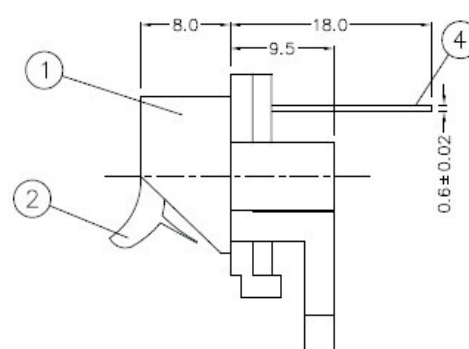
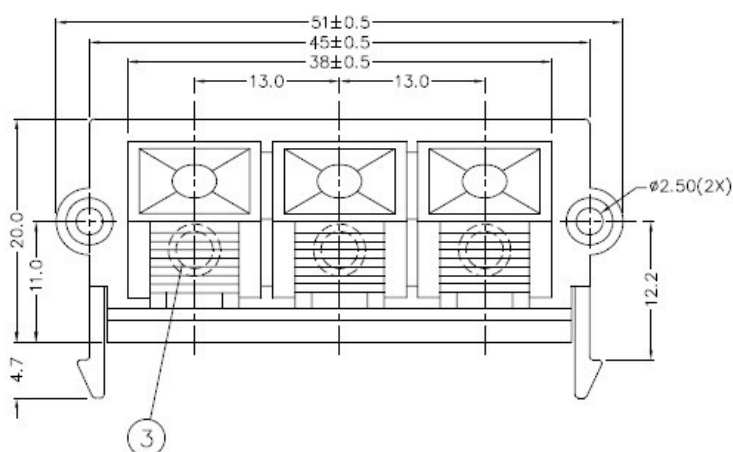
ITEM	DISCRIPTION								
KLS1-WP-2P-01B (Push Terminal) 	<table border="1"> <tr> <td>Withstand Voltage:</td><td>500 V</td></tr> <tr> <td>Insulation Resistance:</td><td>50 Megohms</td></tr> <tr> <td>Contact Resistance:</td><td>less than 30 Milliohms</td></tr> <tr> <td>Application:</td><td>Audio system</td></tr> </table> 	Withstand Voltage:	500 V	Insulation Resistance:	50 Megohms	Contact Resistance:	less than 30 Milliohms	Application:	Audio system
Withstand Voltage:	500 V								
Insulation Resistance:	50 Megohms								
Contact Resistance:	less than 30 Milliohms								
Application:	Audio system								
KLS1-WP-2P-02B (Push Terminal) 	<table border="1"> <tr> <td>Withstand Voltage:</td><td>500 V</td></tr> <tr> <td>Insulation Resistance:</td><td>50 Megohms</td></tr> <tr> <td>Contact Resistance:</td><td>less than 30 Milliohms</td></tr> <tr> <td>Application:</td><td>Audio system</td></tr> </table> 	Withstand Voltage:	500 V	Insulation Resistance:	50 Megohms	Contact Resistance:	less than 30 Milliohms	Application:	Audio system
Withstand Voltage:	500 V								
Insulation Resistance:	50 Megohms								
Contact Resistance:	less than 30 Milliohms								
Application:	Audio system								
KLS1-WP-2P-03A (Push Terminal) 	<table border="1"> <tr> <td>Withstand Voltage:</td><td>500 V</td></tr> <tr> <td>Insulation Resistance:</td><td>50 Megohms</td></tr> <tr> <td>Contact Resistance:</td><td>less than 30 Milliohms</td></tr> <tr> <td>Application:</td><td>Audio system</td></tr> </table> 	Withstand Voltage:	500 V	Insulation Resistance:	50 Megohms	Contact Resistance:	less than 30 Milliohms	Application:	Audio system
Withstand Voltage:	500 V								
Insulation Resistance:	50 Megohms								
Contact Resistance:	less than 30 Milliohms								
Application:	Audio system								
KLS1-WP-2P-04A (Push Terminal) 	<table border="1"> <tr> <td>Withstand Voltage:</td><td>500 V</td></tr> <tr> <td>Insulation Resistance:</td><td>50 Megohms</td></tr> <tr> <td>Contact Resistance:</td><td>less than 30 Milliohms</td></tr> <tr> <td>Application:</td><td>Audio system</td></tr> </table>	Withstand Voltage:	500 V	Insulation Resistance:	50 Megohms	Contact Resistance:	less than 30 Milliohms	Application:	Audio system
Withstand Voltage:	500 V								
Insulation Resistance:	50 Megohms								
Contact Resistance:	less than 30 Milliohms								
Application:	Audio system								

Loudspeaker Connectors Series

ITEM	ITEM
KLS1-WP-2P-05A (Push Terminal) 	KLS1-WP-2P-06A 
KLS1-WP-2P-07A 	KLS1-WP-2P-08A 
KLS1-WP-2P-09A 	KLS1-WP-2P-10A 
KLS1-WP-2P-11A 	KLS1-WP-2P-12A 

Loudspeaker Connectors Series

KLS1-WP-3P-01A (Push Terminal)

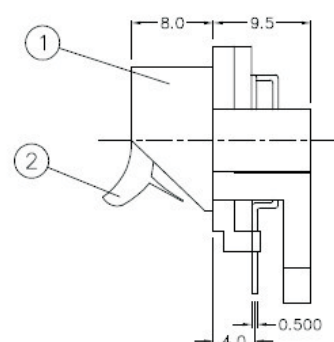
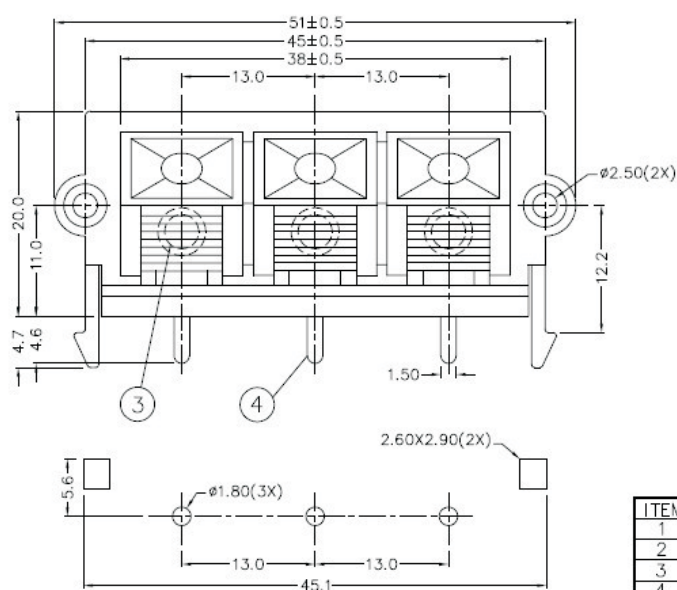


ITEM	PART NAME	MATERIAL	QTY.	REMARK
1	BODY	PBT	1	
2	PUSH PLATE	PBT	3	
3	SPRING	STEEL	3	
4	TERMINAL	BRASS	3	

Withstand Voltage:	500 V
Insulation Resistance:	50 Megohms
Contact Resistance:	less than 30 Milliohms
Application:	Audio system

Loudspeaker Connectors Series

KLS1-WP-3P-01B (Push Terminal)

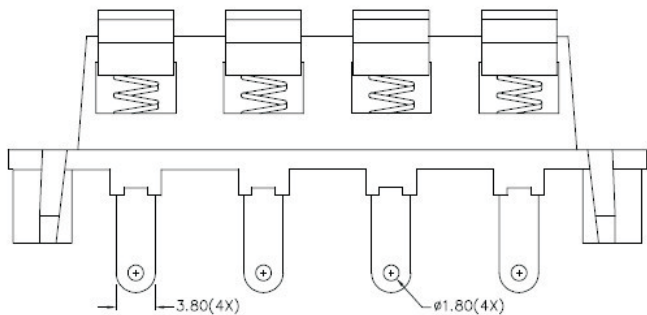
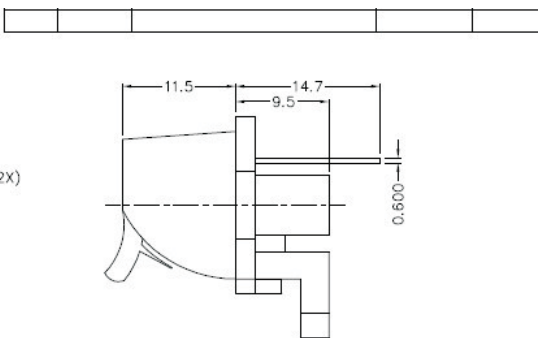
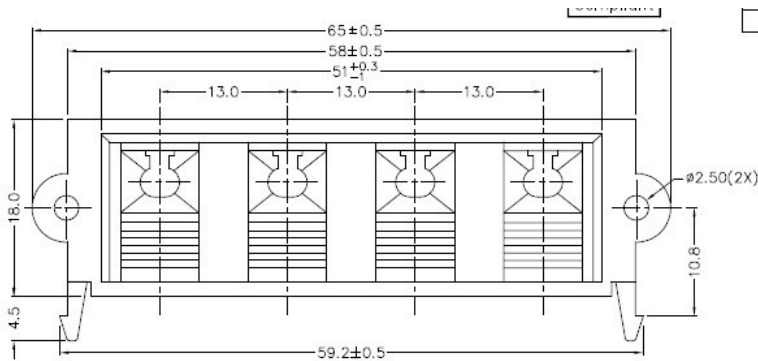


ITEM	PART NAME	MATERIAL	QTY.	REMARK
1	BODY	PBT	1	
2	PUSH PLATE	PBT	3	
3	SPRING	STEEL	3	
4	TERMINAL	BRASS	3	

Withstand Voltage:	500 V
Insulation Resistance:	50 Megohms
Contact Resistance:	less than 30 Milliohms
Application:	Audio system

Loudspeaker Connectors Series

KLS1-WP-4P-01A (Push Terminal)

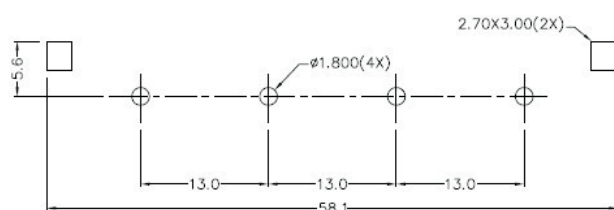
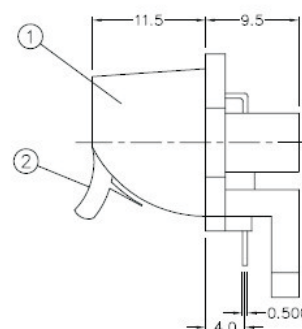
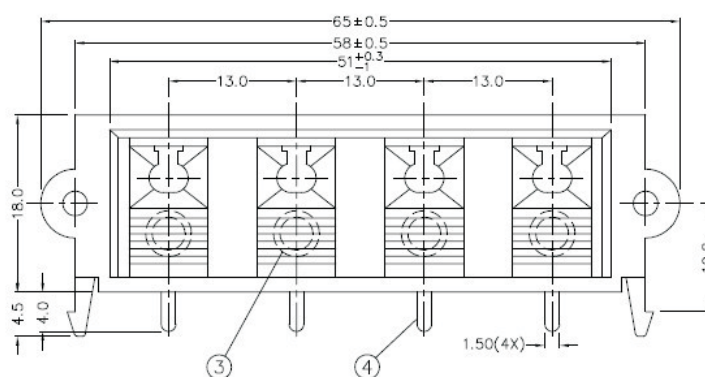


ITEM	PART NAME	MATERIAL	QTY.	REMARK
1	BODY	PBT	1	
2	PUSH PLATE	PBT	4	
3	SPRING	STEEL	4	
4	TERMINAL	BRASS	4	
MODEL		COLOR OF PUSH PLATE		
TST-204HL-01		R B B R		R=RED B=BLACK

Withstand Voltage:	500 V
Insulation Resistance:	50 Megohms
Contact Resistance:	less than 30 Milliohms
Application:	Audio system

Loudspeaker Connectors Series

KLS1-WP-4P-01B (Push Terminal)

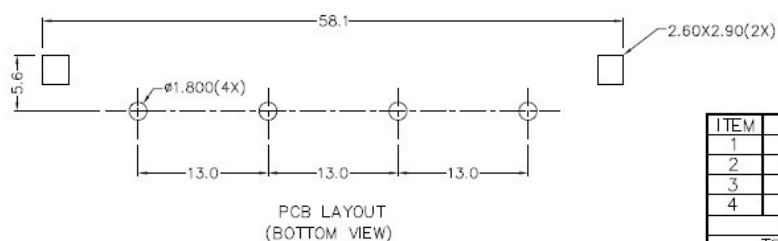
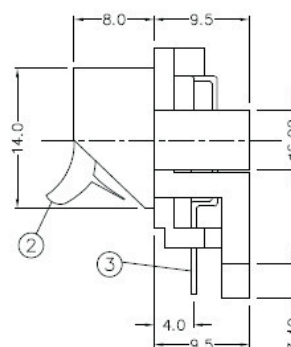
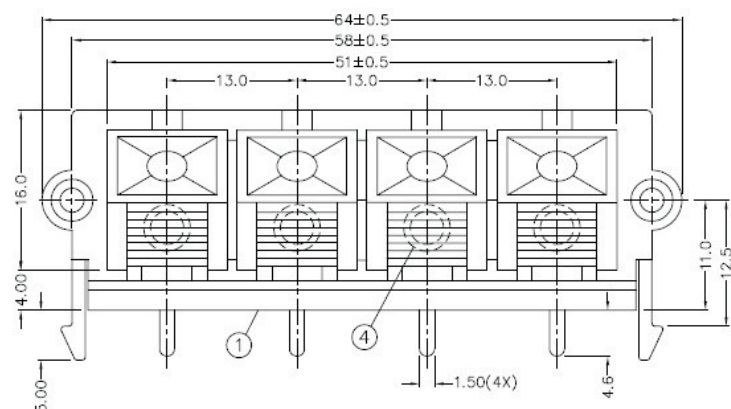


ITEM	PART NAME	MATERIAL	QTY.	REMARK
1	BODY	PBT	1	
2	PUSH PLATE	PBT	4	
3	SPRING	STEEL	4	
4	TERMINAL	BRASS	4	
MODEL		COLOR OF PUSH PLATE		
TST-204V-01		R B B R		R=RED
TST-204V-02		B B B B		B=BLACK

Withstand Voltage:	500 V
Insulation Resistance:	50 Megohms
Contact Resistance:	less than 30 Milliohms
Application:	Audio system

Loudspeaker Connectors Series

KLS1-WP-4P-02B (Push Terminal)



ITEM	PART NAME	MATERIAL	QTY.	REMARK
1	BODY	PBT	1	
2	PUSH PLATE	PBT	4	
3	SPRING	STEEL	4	
4	TERMINAL	BRASS	4	
MODEL		COLOR OF PUSH PLATE		
TST-214V		R B B R		R=RED B=BLACK

Withstand Voltage:	500 V
Insulation Resistance:	50 Megohms
Contact Resistance:	less than 30 Milliohms
Application:	Audio system