

Connector

Box Header Series

KLS1-202B Box Header 2.00mm(0.079") Straight pin Type

Electrical Characteristics:

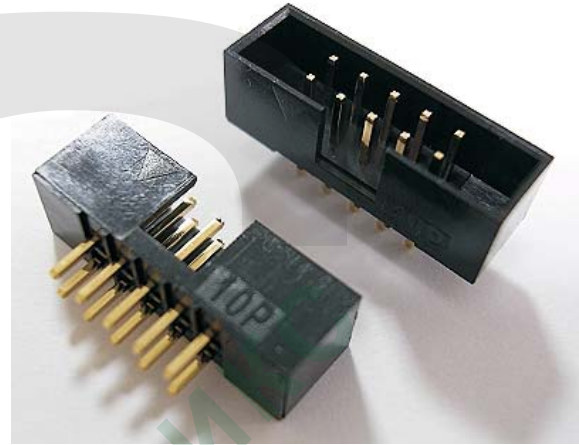
Current Rating: 1 AMP
Insulator Resistance: 5000MΩmin. at DC 500V
Contact Resistance: 20mΩmax. at DC 100mA
Operating Temperature: -45°C~+105°C

Material:

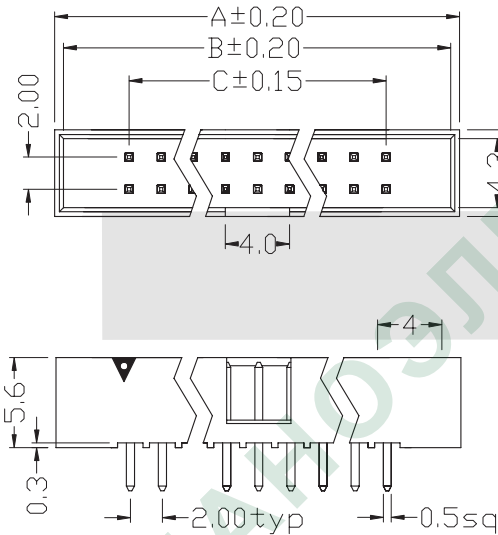
Housing: 30% Glass filled PBT UL94V-0
Contacts: Brass
Plating: Gold plated: 2u". over 50u" nickel

Features:

- * Fully shrouded provides ultimate reliability,
- * Black or gray insulator available.
- * Choices of Eject lever.

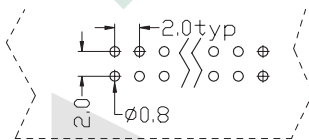


Straight Type



Dimension

Position	A	B	C
06	13.20	12.00	4.00
08	15.20	14.00	6.00
10	17.20	16.00	8.00
14	21.20	20.00	12.00
16	23.20	22.00	14.00
20	27.20	26.00	18.00
24	31.20	30.00	22.00
26	33.20	32.00	24.00
30	37.20	36.00	28.00
34	41.20	40.00	32.00
40	47.20	46.00	38.00
44	51.20	50.00	42.00
50	57.20	56.00	48.00



P. C. B Layout

ORDER INFORMATION

Product No.: KLS1-202B-XX-S-B

Pos. No. _____ Insulator Color: B=Black G=Gray L=Blue
 Box Header 2.0mm Series _____ Tail Style: S=Straight Pin R=Right Pin T=SMT Pin
 Number of Contacts: XX=06-64Pin

Connector

Box Header Series

KLS1-202B Box Header 2.00mm(0.079") Right pin Type

Electrical Characteristics:

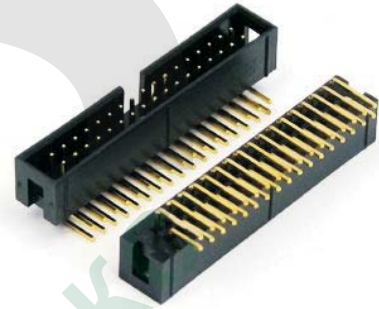
Current Rating: 1 AMP
 Insulator Resistance: 5000MΩmin. at DC 500V
 Contact Resistance: 20mΩmax. at DC 100mA
 Operating Temperature: -45°C~+105°C

Material:

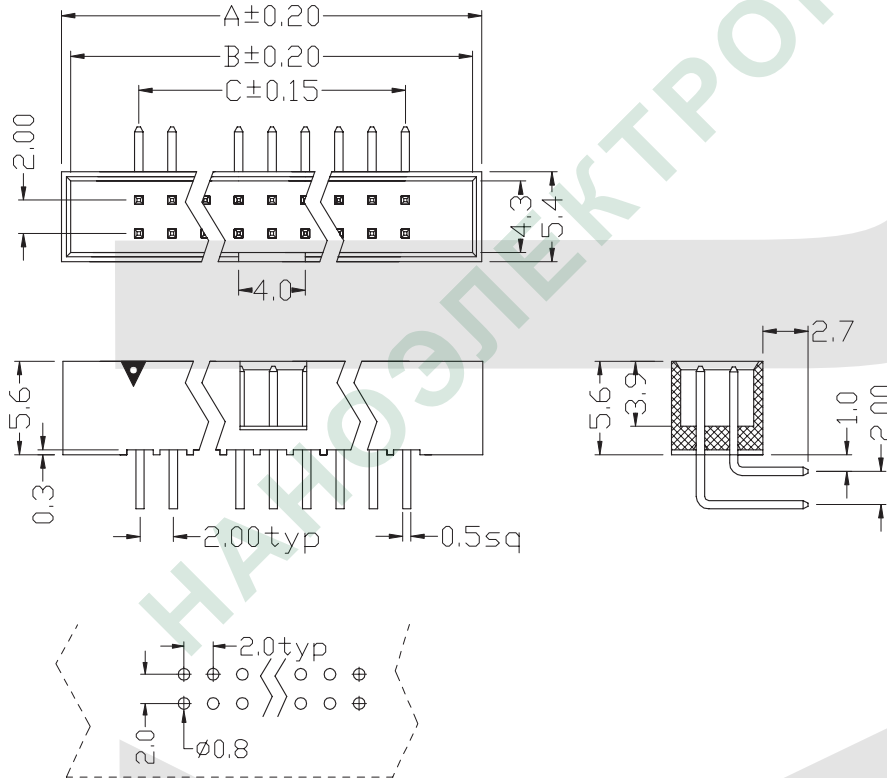
Housing: 30% Glass filled PBT UL94V-0
 Contacts: Brass
 Plating: Gold plated: 2u". over 50u" nickel

Features:

- * Fully shrouded provides ultimate reliability,
- * Black or gray insulator available.
- * Choices of Eject lever.



Right Angle Type



Dimension

Position	A	B	C
06	13.20	12.00	4.00
08	15.20	14.00	6.00
10	17.20	16.00	8.00
14	21.20	20.00	12.00
16	23.20	22.00	14.00
20	27.20	26.00	18.00
24	31.20	30.00	22.00
26	33.20	32.00	24.00
30	37.20	36.00	28.00
34	41.20	40.00	32.00
40	47.20	46.00	38.00
44	51.20	50.00	42.00
50	57.20	56.00	48.00

P. C. B Layout

ORDER INFORMATION

Product No.: KLS1-202B-XX-R-B

Pos. No. _____ Insulator Color: B=Black G=Gray L=Blue
 Box Header 2.0mm Series _____ Tail Style: S=Straight Pin R=Right Pin T=SMT Pin
 _____ Number of Contacts: XX=06-64Pin

Connector

Box Header Series

KLS1-202B Box Header 2.00mm(0.079") SMT pin Type

Electrical Characteristics:

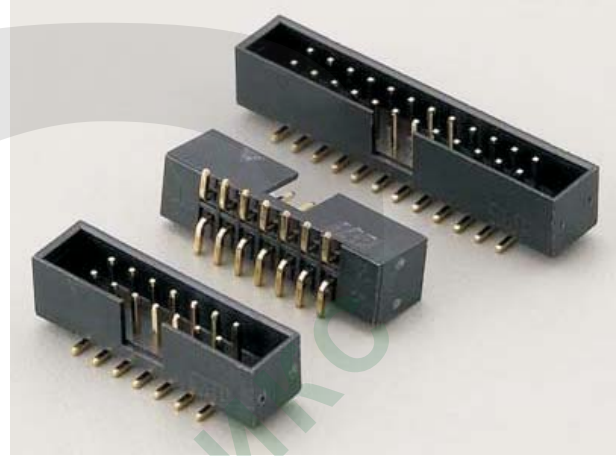
Current Rating: 1 AMP
Insulator Resistance: 5000MΩmin. at DC 500V
Contact Resistance: 20mΩmax. at DC 100mA
Operating Temperature: -45°C~+105°C

Material:

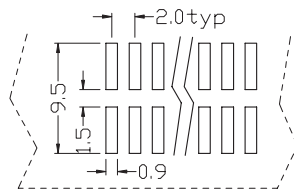
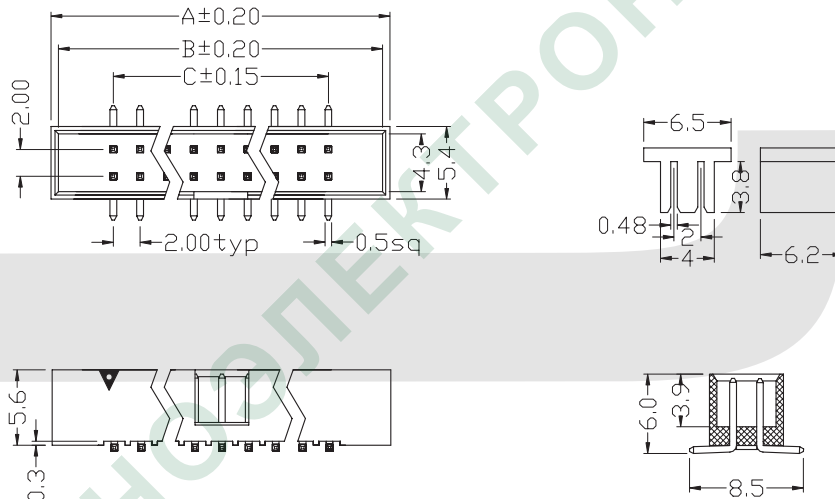
Housing: 30% Glass filled PBT UL94V-0
Contacts: Brass
Plating: Gold plated: 2u". over 50u" nickel

Features:

- * Fully shrouded provides ultimate reliability,
- * Black or gray insulator available.
- * Choices of Eject lever.



SMT Type



P. C. B Layout

Dimension

Position	A	B	C
06	13.20	12.00	4.00
08	15.20	14.00	6.00
10	17.20	16.00	8.00
14	21.20	20.00	12.00
16	23.20	22.00	14.00
20	27.20	26.00	18.00
24	31.20	30.00	22.00
26	33.20	32.00	24.00
30	37.20	36.00	28.00
34	41.20	40.00	32.00
40	47.20	46.00	38.00
44	51.20	50.00	42.00
50	57.20	56.00	48.00

ORDER INFORMATION

Product No.: KLS1-202B-XX-T-B

Pos. No. _____ Insulator Color: B=Black G=Gray L=Blue
 Box Header 2.0mm Series _____ Tail Style: S=Straight Pin R=Right Pin T=SMT Pin
 _____ Number of Contacts: XX=06-64Pin