

# Hard Metric Connector

## KLS1-HBC6 Series

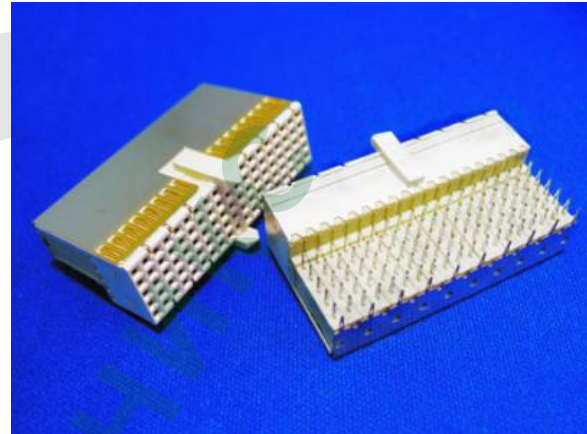
KLS1-HBC6-AB19 (95PIN) (Type AB, Female, Dip 90)

### Electrical Characteristics:

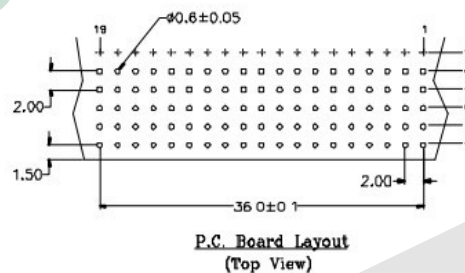
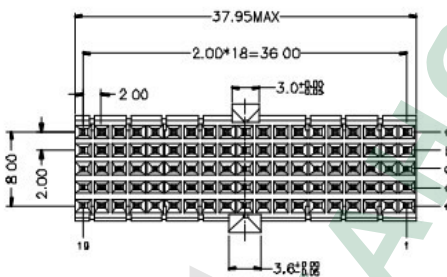
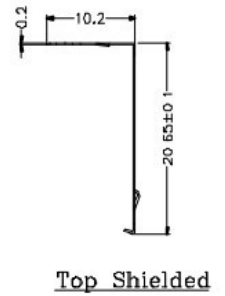
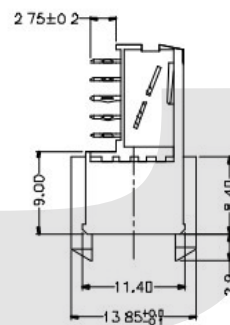
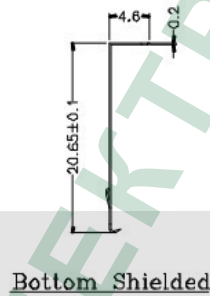
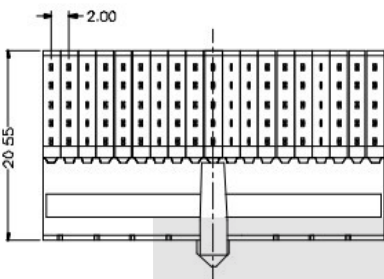
- Current Rating: 1.5A at 20°C, 1.0A at 70°C
- Test Voltage: 750 Vrms
- Contact Resistance: 20m(ohm) Max
- Operating Temperature: -55°C~+125°C

### Material:

- Housing: LCP UL94V-0
- Contacts: Male-Brass / Female-Phosphor Bronze
- Press-in force: 100N/pin Max
- Retention force: 20N/pin Min



2.0mm Hard Metric Connector (Type AB, Female, Dip 90)



HM7AB-SQx-095-LF  
LEADFREE  
X: WITHOUT COVER  
T: WITH TOP COVER  
B: WITH BOTTOM COVER  
A: WITH ALL COVER

RoHS Compliant

## ORDER INFORMATION