

## TERMINAL BLOCK Connector

**KLS**electronic  
www.cnkls.com

### PCB Series

KLS2-128R-5.00/7.50 Series Pitch=5.00mm/7.50mm

#### Electrical :

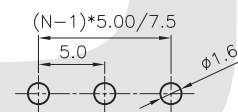
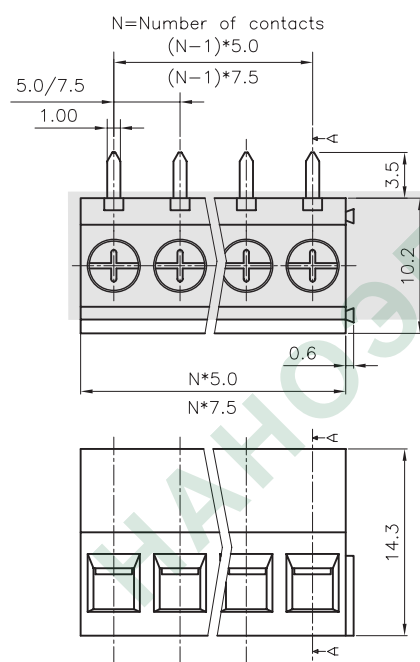
Rated voltage: 300V  
Rated current: 16A  
Contact resistance: 20mΩ  
Insulation resistance: 5000MΩ/1000V  
Withstanding Voltage: AC1500V/1Min  
Wire range: 24-12AWG 2.5mm<sup>2</sup>

#### Material

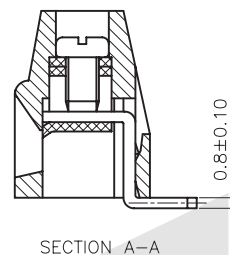
Screws: M2.5 steel Zinc plated  
Contact: Brass  
Pin header: Brass, Tin plated  
Housing: PA66, UL94V-0

#### Mechanical

Temp. Range: -40°C~+105°C  
MAX Soldering: +250°C for 5 Sec.  
Torque: 0.4Nm (3.6lb.in)  
Strip length: 6-7mm



RECOMMEND PCB LAYOUT  
(TOLERANCE=±0.05)



### ORDER INFORMATION

Product NO.: KLS2-128R-5.00-XXP X X X

Pos. NO.

Series No.

Pitch: 5.00=5.00mm  
7.50=7.50mm

Number of Pole

Customer Request

Screw: C=Cross Screw  
S=Slot Screw

Color: 1=Gray 2=Blue 3=Black  
4=Green 5=Orange 6=Red  
7=Transparent 8=Yellow 9=White

All specification & dimensions are subject to change, please call your nearest KLS sales representative for update information