

Connector

Pin Header Series

KIS1-203B 2.00mm Mini Jumper Series

Electrical Specification:

Current Rating: 1 AMP

Insulator Resistance: 5000M Ohm, min. at DC 500V

Contact Resistance: 20m Ohm, max. at DC 100mA

Operating Temperature: -55°C~+105°C

Material:

Housing: 30% Glass filled PBT UL94V-0

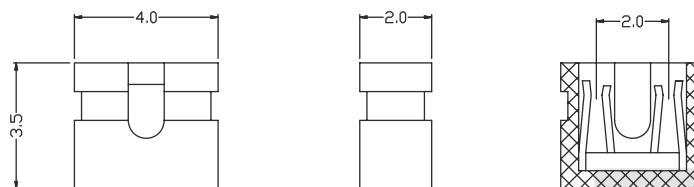
Contacts: Brass or Phosphor Bronze

Plating: Selective gold plated: gold plated on mating area and nickel plated on wire cutting area

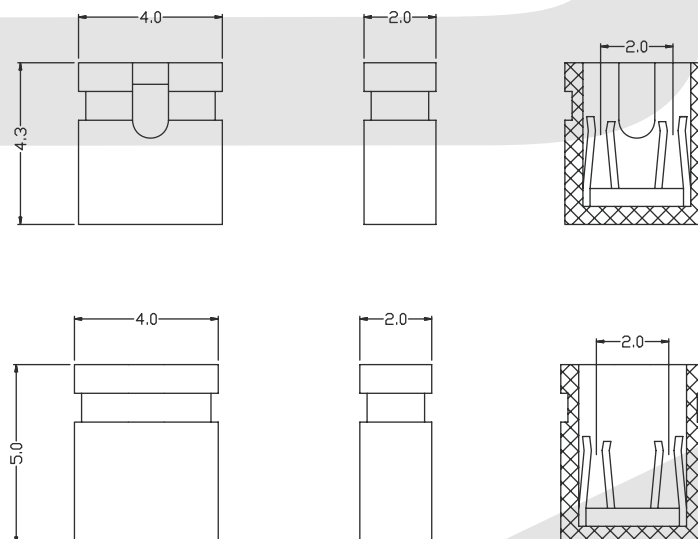
Gold plated: 3u" over 50u" nickel



OPEN



CLOSE



ORDER INFORMATION

Product NO.: KLS1-203 B-C-B-6.0

Pos. NO.

Series No.

Pitch: A=2.54mm B=2.00mm

Housing Type: O-Open C-Close

Color: B-Black R-Red L-Blue G-Green

Height:

Pitch 2.54mm Open Type:4.5mm / 6.0mm / 8.0mm / 13.5mm
Pitch 2.54mm Close Type:6.5mm / 8.5mm

Pitch 2.0mm Open Type:3.5mm / 4.5mm
Pitch 2.0mm Close Type:5.0mm

Pin Header Series

KIS1-203A 2.54mm Mini Jumper Series

Electrical Specification:

Current Rating: 1 AMP

Insulator Resistance: 5000M Ohm, min. at DC 500V

Contact Resistance: 20m Ohm, max. at DC 100mA

Operating Temperature: -55°C~+105°C

Material:

Housing: 30% Glass filled PBT UL94V-0

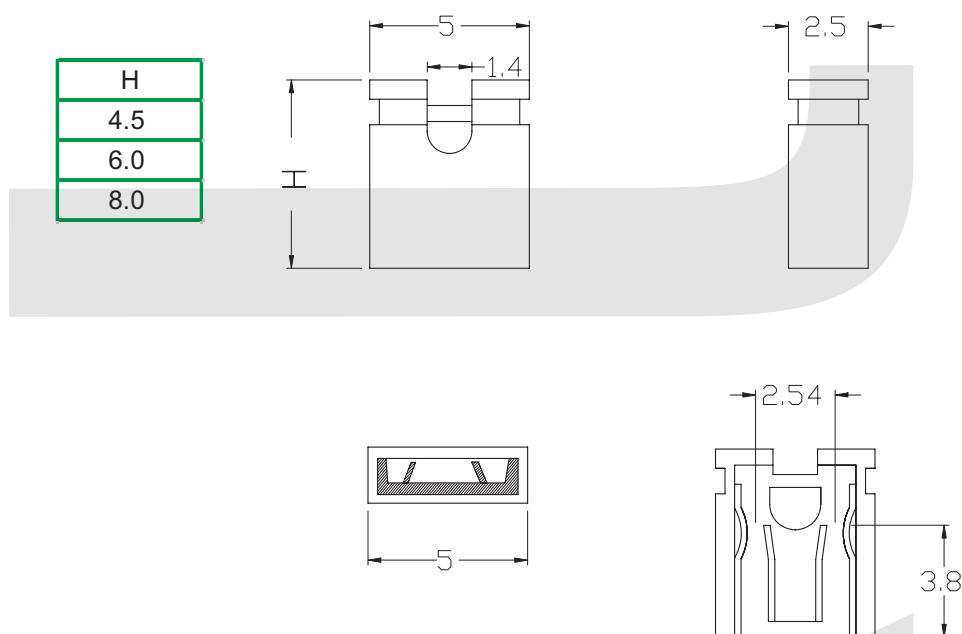
Contacts: Brass or Phosphor Bronze

Plating: Selective gold plated: gold plated on mating area and nickel plated on wire cutting area

Gold plated: 3u" over 50u" nickel



OPEN



ORDER INFORMATION

Product NO.: KLS1-203 A-O-B-6.0

Pos. NO.

Series No.

Pitch: A=2.54mm B=2.00mm

Housing Type: O-Open C-Close

Color: B-Black R-Red L-Blue G-Green

Height:

Pitch 2.54mm Open Type:4.5mm / 6.0mm / 8.0mm / 13.5mm
Pitch 2.54mm Close Type:6.5mm / 8.5mm

Pitch 2.0mm Open Type:3.5mm / 4.5mm
Pitch 2.0mm Close Type:5.0mm

Pin Header Series

KIS1-203A 2.54mm Mini Jumper Series

Electrical Specification:

Current Rating: 1 AMP

Insulator Resistance: 5000M Ohm, min. at DC 500V

Contact Resistance: 20m Ohm, max. at DC 100mA

Operating Temperature: -55°C~+105°C

Material:

Housing: 30% Glass filled PBT UL94V-0

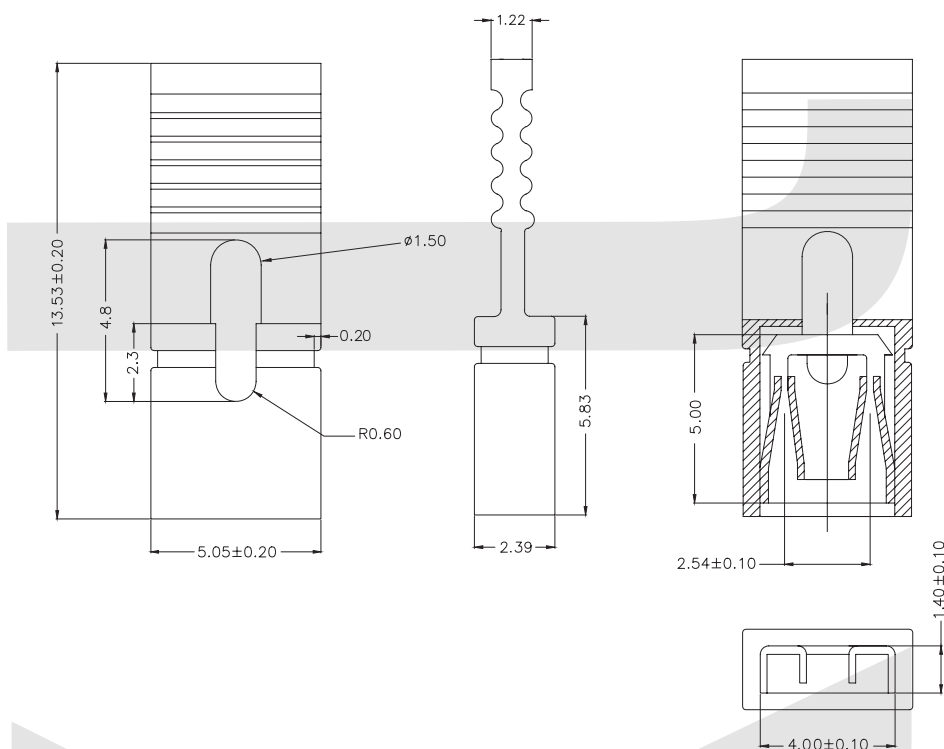
Contacts: Brass or Phosphor Bronze

Plating: Selective gold plated: gold plated on mating area and nickel plated on wire cutting area

Gold plated: 3u" over 50u" nickel



OPEN



ORDER INFORMATION

Product NO.: KLS1-203 A-O-B-13.5

Pos. NO.

Series No.

Pitch: A=2.54mm B=2.00mm

Housing Type: O-Open C-Close

Color: B-Black R-Red L-Blue G-Green

Height:

Pitch 2.54mm Open Type:4.5mm / 6.0mm / 8.0mm / 13.5mm
Pitch 2.54mm Close Type:6.5mm / 8.5mm

Pitch 2.0mm Open Type:3.5mm / 4.5mm
Pitch 2.0mm Close Type:5.0mm

Pin Header Series

KIS1-203A 2.54mm Mini Jumper Series

Electrical Specification:

Current Rating: 1 AMP

Insulator Resistance: 5000M Ohm, min. at DC 500V

Contact Resistance: 20m Ohm, max. at DC 100mA

Operating Temperature: -55°C~+105°C

Material:

Housing: 30% Glass filled PBT UL94V-0

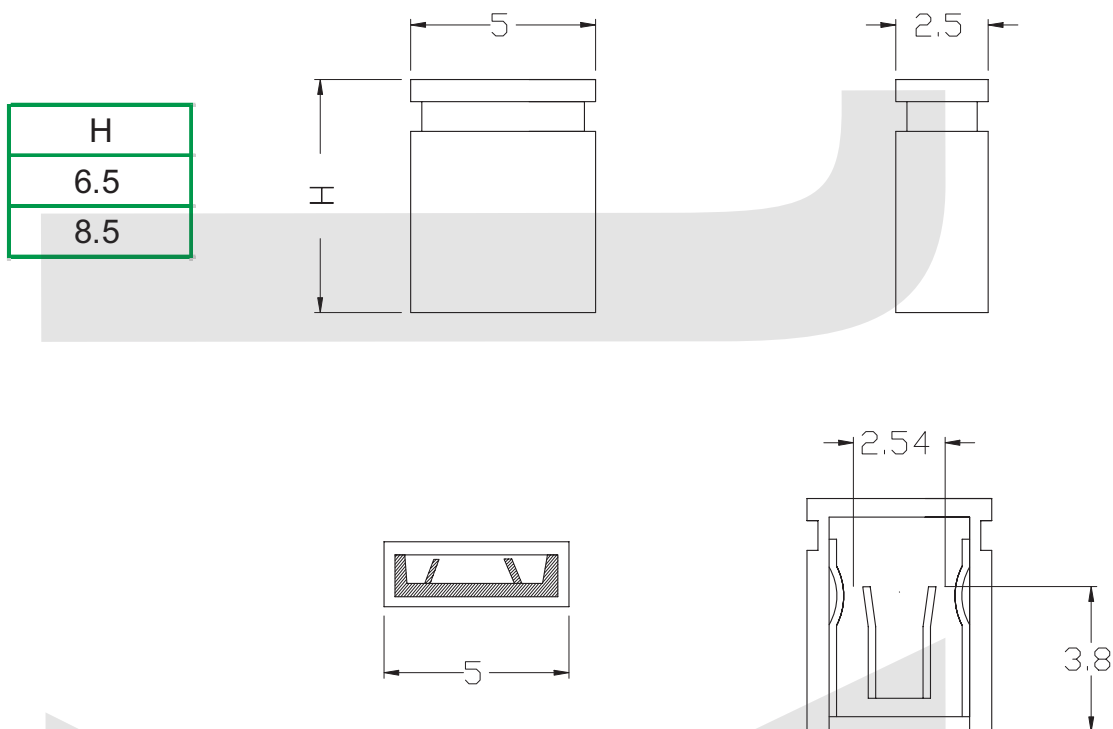
Contacts: Brass or Phosphor Bronze

Plating: Selective gold plated: gold plated on mating area and nickel plated on wire cutting area

Gold plated: 3u" over 50u" nickel



CLOSE



ORDER INFORMATION

Product NO.: KLS1-203 A-C-B-6.0

Pos. NO.

Series No.

Pitch: A=2.54mm B=2.00mm

Housing Type: O-Open C-Close

Color: B-Black R-Red L-Blue G-Green

Height:

Pitch 2.54mm Open Type:4.5mm / 6.0mm / 8.0mm / 13.5mm
Pitch 2.54mm Close Type:6.5mm / 8.5mm

Pitch 2.0mm Open Type:3.5mm / 4.5mm
Pitch 2.0mm Close Type:5.0mm