

Wiring Accessories

KLSelectronic
www.cnkls.com

PCB Support Series

KLS8-0201 PCB Support Series

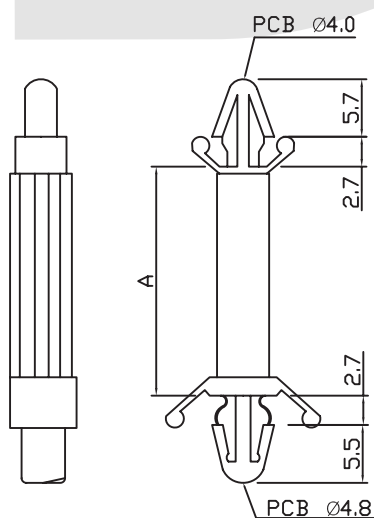
Material: UL Approved Nylon66, 94V-2

Installed easily and quickly by hand.

Barbed arrow mounts on both ends locking securely.

This support can be shaped to lock in the board for PCB / PCB
or PCB / CHASSIA spacer

Unit:mm



Item No.	A	Packing
CS-0305	4.8 (3/16")	100PCS (1000PCS)
CS-0406	6.4 (1/4")	
CS-0610	9.6 (3/8")	
CS-0813	12.7 (1/2")	
CS-1016	15.9 (5/8")	
CS-1219	19.1 (3/4")	
CS-1422	22.2 (7/8")	
CS-1625	25.4 (1")	
CS-1828	28.5 (1 1/8")	
CS-2236	35.0 (1 3/8")	

ORDER INFORMATION

KLS8-0201-CS-0305

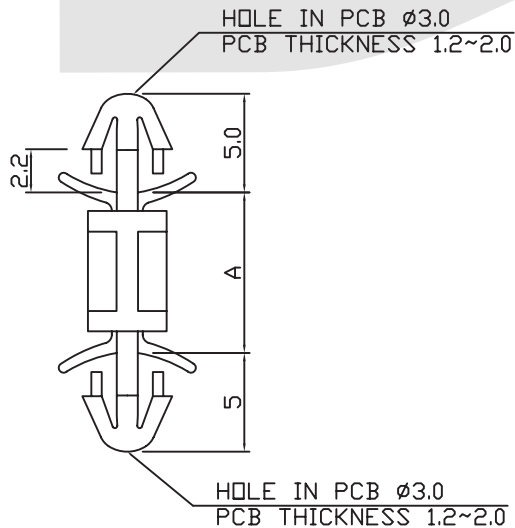
— Hight
— PCB Support Series
— Part Number

PCB Support Series

KLS8-0234 PCB Support Series

Material: UL approved Nylon 66, 94V-2
by hand to support P.C.B. Can be removed for replacement easily.

Unit:mm



Part No.	Spacing Height "A" $\pm 0.3\text{mm}$	Package
BLG-03	3.2	1000PCS
BLG-04	4	1000PCS
BLG-05	5	1000PCS
BLG-06	6.3	1000PCS
BLG-07	7	1000PCS
BLG-08	8	1000PCS
BLG-09	9.5	1000PCS
BLG-11	11.2	1000PCS
BLG-12	12	1000PCS
BLG-15	15	1000PCS
BLG-17	17	1000PCS
BLG-20	20.2	1000PCS
BLG-25	25.4	1000PCS

ORDER INFORMATION

KLS8-0234 - BLG-03

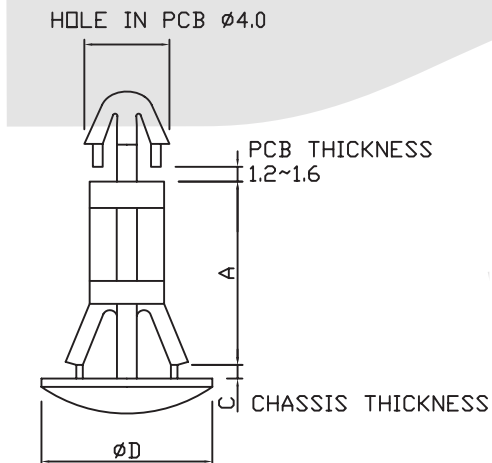
Hight
 PCB Support Series
 Part Number

PCB Support Series

KLS8-0239 PCB Support Series

Material: UL approved Nylon 66, 94V-2
TO Fit 5.5mm hole

Unit:mm



Model No.	A	C	D	Package
BSC-03	3.5	1.0~2.0	10	1000 PCS
BSC-05	5	1.0~2.0	10	1000 PCS
BSC-06	6	1.0~2.0	10	1000 PCS
BSC-07	7	1.0~2.0	10	1000 PCS
BSC-08	8	1.0~2.0	10	1000 PCS
BSC-10	10	1.0~2.0	10	1000 PCS
BSC-12	12	1.0~2.0	10	1000 PCS
BSC-14	14	1.0~2.0	10	1000 PCS
BSC-16	16	1.0~2.0	10	1000 PCS
BSC-18	18	1.0~2.0	10	1000 PCS

ORDER INFORMATION

KLS8-0239 - BSC-03

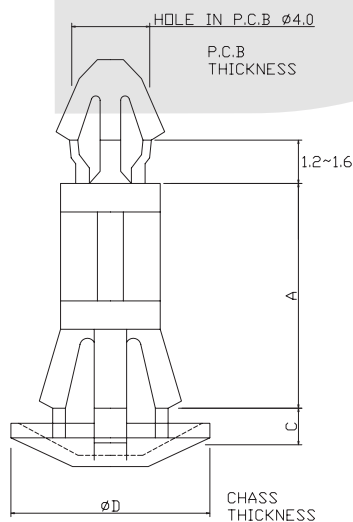
_____ Hight
 _____ PCB Support Series
 _____ Part Number

PCB Support Series

KLS8-0209 PCB Support Series

Material: UL approved Nylon 66, 94V-2
TO Fit 5.5mm hole

Unit:mm



Model No.	A	C	D	Package
BSD-03	3.5	1.0~1.8	10	1000 PCS
BSD-05	5	1.0~1.8	10	1000 PCS
BSD-06	6	1.0~1.8	10	1000 PCS
BSD-07	7	1.0~1.8	10	1000 PCS
BSD-08	8	1.0~1.8	10	1000 PCS
BSD-10	10	1.0~1.8	10	1000 PCS
BSD-12	12	1.0~1.8	10	1000 PCS
BSD-14	14	1.0~1.8	10	1000 PCS
BSD-16	16	1.0~1.8	10	1000 PCS
BSD-18	18	1.0~1.8	10	1000 PCS

ORDER INFORMATION

KLS8-0209 - BSD-03

_____ Hight
 _____ PCB Support Series
 _____ Part Number

PCB Support Series

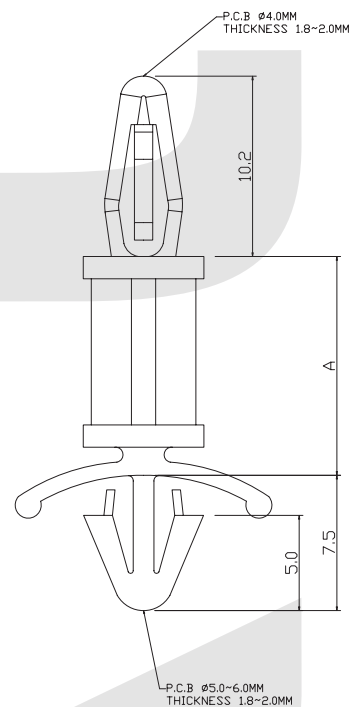
KLS8-0227 PCB Support Series

Material: UL approved Nylon 66, 94V-2
by hand to support P.C.B. Can be removed for
replacement easily.

Unit:mm



ITEM NO.	A
BLK-03	3.5
BLK-05	4.8
BLK-06A	6.0
BLK-06B	6.4
BLK-08	7.9
BLK-09	9.5
BLK-11	11.1
BLK-12	12.7
BLK-16	15.9
BLK-19	19.1
BLK-22	22.2
BLK-25	25.4
BLK-28	28.6
BLK-31	31.7
BLK-35	34.9



ORDER INFORMATION

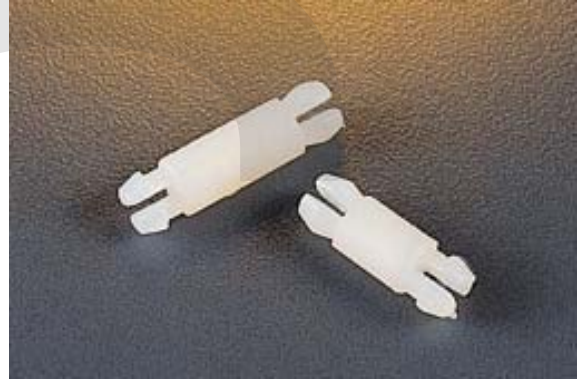
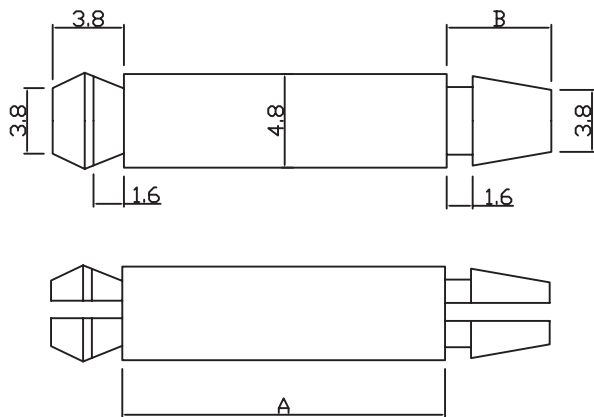
KLS8-0227 - BLK-03

High
PCB Support Series
Part Number

PCB Support Series

KLS8-0202 PCB Support Series

Material : UL Approved Nylon66, 94V-2
Easily installed by hand to lock securely.
Easily removed by pinching prong tips
No tools are required.
Unit:mm



Item No.	A	B	Packing
SP-03	3.2	3.8	100PCS (1000PCS)
SP-06	6.3	3.8	
SP-08	8	3.8	
SP-10	10.5	3.8	
SP-13	12.7	5.6	
SP-16	15.9	5.6	
SP-17	16.5	5.6	
SP-19	19.1	5.6	
SP-22	22.2	5.6	
SP-25	25.4	5.6	

ORDER INFORMATION

KLS8-0202 - SP-03

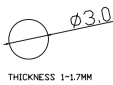
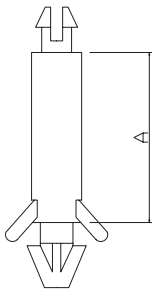
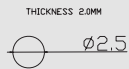
— Hight
— PCB Support Series
— Part Number

PCB Support Series

KLS8-0235 PCB Support Series

Material: UL approved Nylon 66, 94V-2
by hand to support P.C.B. Can be removed
for replacement easily.

Unit:mm



Part No.	Spacing Height "A" ±0.3mm (inch)	Package
LCA-03	3.2	1000PCS
LCA-04	4.0	
LCA-05	5.0	
LCA-06	6.3	
LCA-07	7.0	
LCA-08	8.0	
LCA-09	9.0	
LCA-10	10.0	
LCA-12	12.0	
LCA-15	15.8	

ORDER INFORMATION

KLS8-0235 - LCA-03

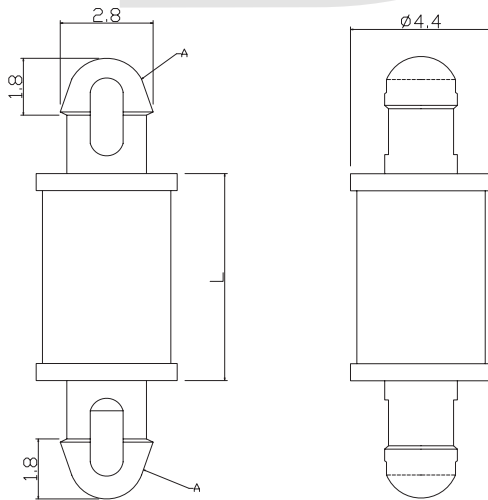
— Hight
— PCB Support Series
— Part Number

PCB Support Series

KLS8-0237 PCB Support Series

Material: UL approved Nylon 66, 94V-2
Drill 4mm hole on both P.C.B. board and chasis before usage.
For application where the space is limited and extra height is prohibited

Unit:mm



"A" HOLE IN P.C.B Ø2.54
P.C.B THICKNESS 1.6MM



Part No.	Spacing Height "L"±0.3mm (inch)	Package
LCA-03	3.9	1000PCS
LCA-04	4.8	
LCA-06	6.4	
LCA-08	8.0	
LCA-09	9.5	
LCA-12	12.7	
LCA-15	15.9	

ORDER INFORMATION

KLS8-0237 - LCA-03

— Hight
— PCB Support Series
— Part Number

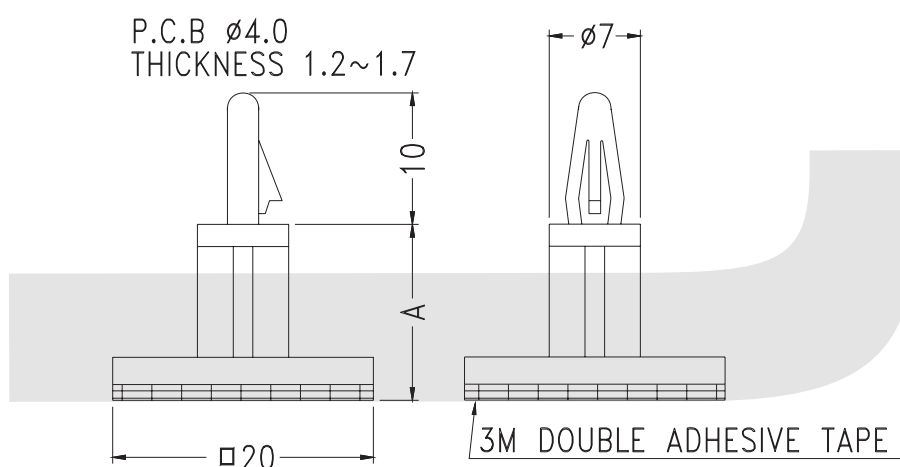
PCB Support Series

KLS8-0224 PCB Support Series

Material: UL approved Nylon 66, 94V-2

Long:20mm Width:20mm

Unit:mm



Part No.	Spacing Height "A" ± 0.3 mm (inch)	Package
CPP-05	5.4	500PCS
CPP-06	6.4	
CPP-08	8.0	
CPP-10	9.9	
CPP-12	12.9	
CPP-16	16.3	

ORDER INFORMATION

KLS8-0224 - CPP-05

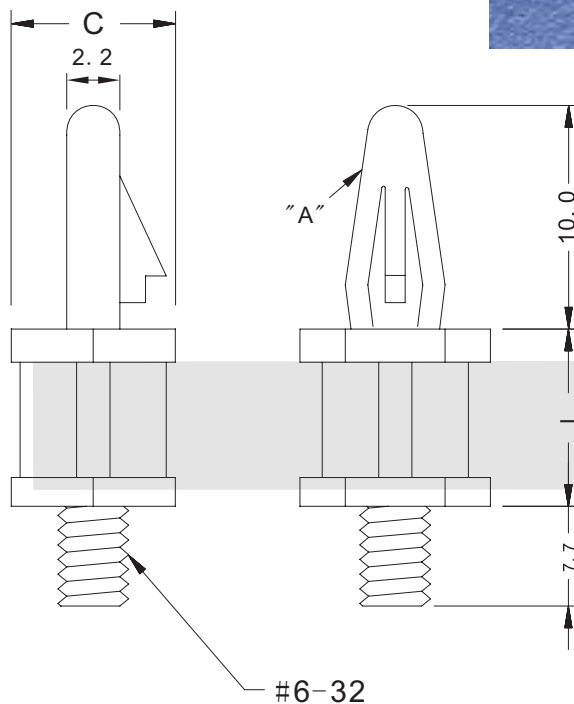
_____ Hight
 _____ PCB Support Series
 _____ Part Number

PCB Support Series

KLS8-0207 PCB Support Series

Material: UL approved Nylon 66, 94V-2

Unit:mm



"A" HOLE IN P. C. B $\varnothing 4.0$
P. C. B THICKNESS 1.6

ITEM NO.	L	C	Packing
PSU-06	6.3	7.8	1000PCS
PSU-10	9.5	7.8	1000PCS
PSU-12	12.7	7.8	1000PCS
PSU-15	15.9	7.8	1000PCS

ORDER INFORMATION

KLS8-0207 - PSU-06

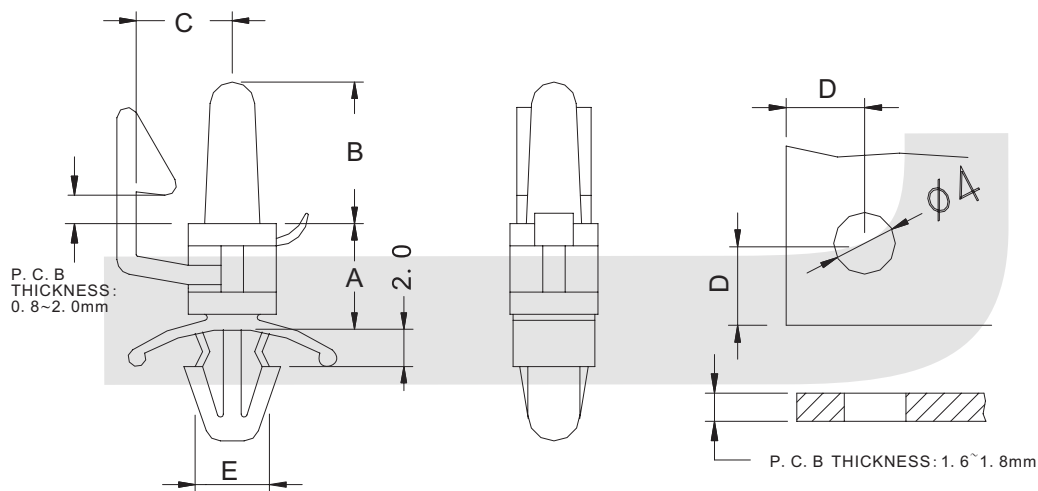
Hight
PCB Support Series
Part Number

PCB Support Series

KLS8-0238 PCB Support Series

Material: UL approved Nylon 66, 94V-2

Unit:mm



Item No.	Dimension					Packing
	A	B	C	D	E	
LTP-10	9.2	7.4	5.5	5.0	5.2	500pcs
LTP-12	11.9	7.4	5.5	5.0	5.2	
LTP-15	15.1	7.4	5.5	5.0	5.2	
LTP-18	17.2	7.4	5.5	5.0	5.2	
LTP-26	26.2	7.4	5.5	5.0	5.2	

ORDER INFORMATION

KLS8-0238 - LTP-10

— Hight
— PCB Support Series
— Part Number

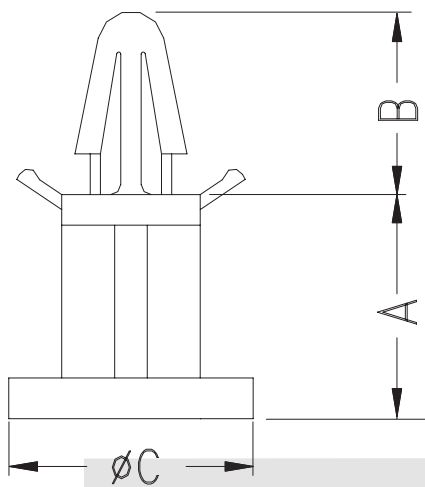
PCB Support Series

KLS8-0212 PCB Support Series

Material: UL approved Nylon 66, 94V-2

Unit:mm

P.C.B $\phi 4.0$
THICKNESS 1.2~1.7



Item No.	A	B	C	Packing
BMS-5	5.6	9.5	11.8	100pcs (1000pcs)
BMS-5L7	5.6	9.5	7.1	
BMS-7	6.5	9.5	11.8	
BMS-8	8.0	9.5	11.8	
BMS-11	11.0	9.0	12.0	

ORDER INFORMATION

KLS8-0212 - BMS-5

— Hight
— PCB Support Series
— Part Number

PCB Support Series

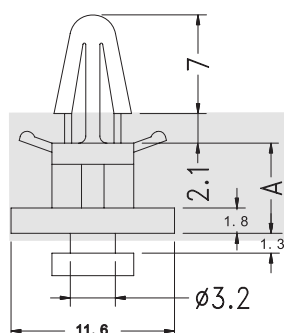
KLS8-0213 PCB Support Series

Material: UL approved Nylon 66, 94V-2

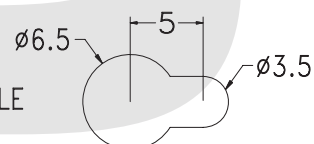
Unit:mm



P.C.B $\varnothing 4.0$
THICKNESS 1.2~1.7



MOUNTING HOLE



Item No.	A	Packing
MS-6	6.4	100pcs (1000pcs)

ORDER INFORMATION

KLS8-0213 - MS-6

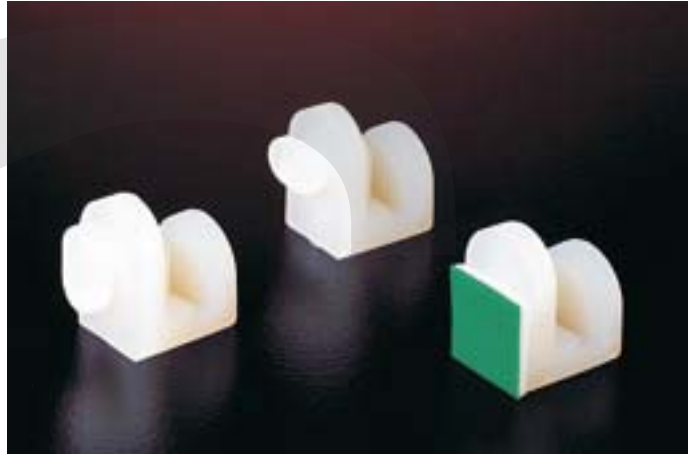
Hight
PCB Support Series
Part Number

PCB Support Series

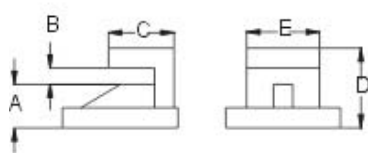
KLS8-0204 PCB Support Series

Material: UL approved Nylon 66, 94V-2
Drills holes on chassis board as shown.

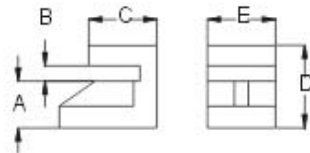
Unit:mm



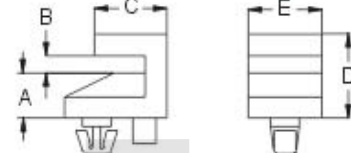
VIII



ES-5A

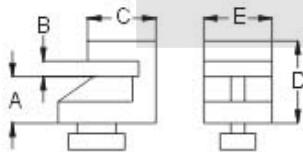


ES-6A

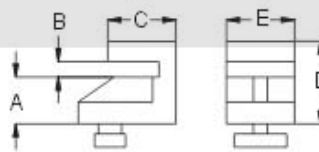


ES-6M

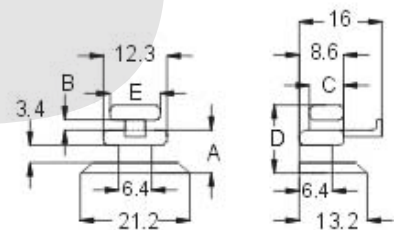
ADHESIVE TAPE



ES-6P



ES-6V



ES-8U

Item No.	A	B	C	D	E	Packing
ES-5A	5.4	2.2	5.0	10.3	9.5	100pcs
ES-6A	6.0	1.9	9.0	10.8	8.7	
ES-6M	5.8	2.2	9.3	10.7	9.5	
ES-6P	6.0	1.9	9.0	10.8	8.7	
ES-6V	6.0	1.9	9.0	10.8	8.7	
ES-8U	8.4	2.0	6.7	10.3	9.8	

ORDER INFORMATION

KLS8-0204 - ES-5A

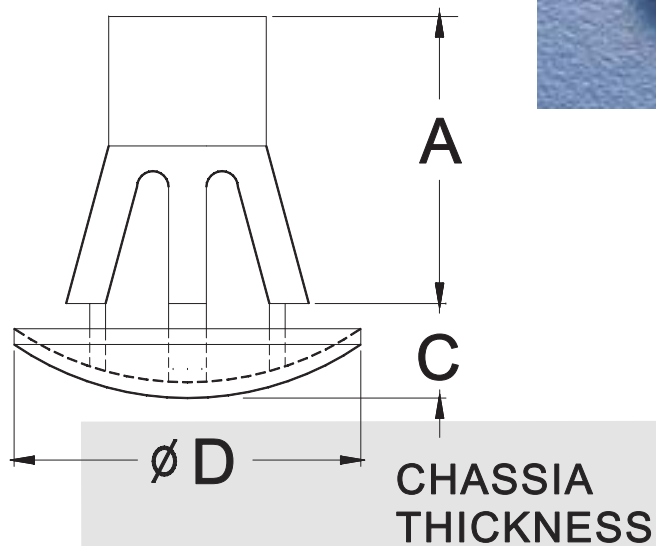
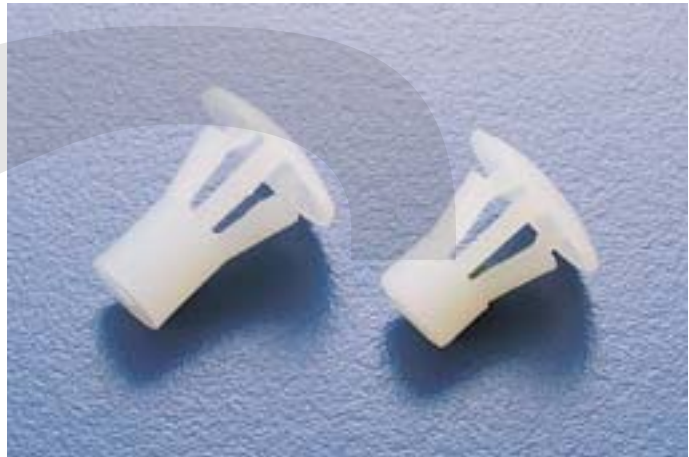
Hight
PCB Support Series
Part Number

PCB Support Series

KLS8-0210 PCB Support Series

Material: UL approved Nylon 66, 94V-2

Unit:mm



Model No.	A	C	D	Package
PSE-05	5.00	1.0~1.8	10.00	1000 PCS
PSE-06	6.40	1.0~1.8	10.00	
PSE-08	8.00	1.0~1.8	10.00	
PSE-09	9.80	1.0~1.8	10.00	
PSE-10	10.10	1.0~1.8	10.00	
PSE-12	12.00	1.0~1.8	10.00	
PSE-14	14.00	1.0~1.8	10.00	
PSE-18	18.00	1.0~1.8	10.00	

ORDER INFORMATION

KLS8-0210 - PSE-05

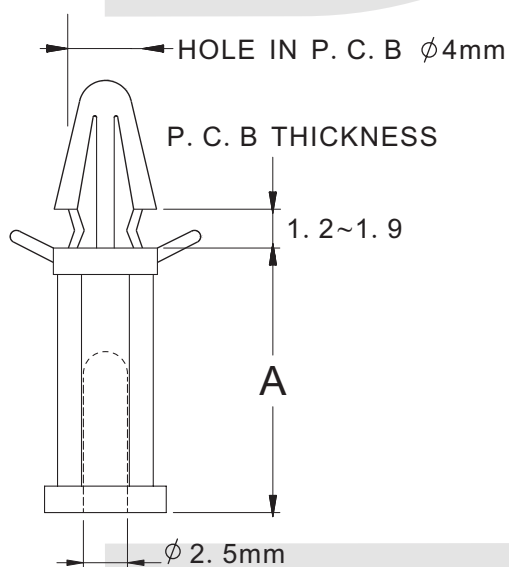
Hight
PCB Support Series
Part Number

PCB Support Series

KLS8-0203 PCB Support Series

Material: UL approved Nylon 66, 94V-2

Unit:mm



Item No.	A	Packing
PS-05	4.8 (3/16")	100PCS (1000PCS)
PS-06	6.4 (1/4")	
PS-10	9.6 (3/8")	
PS-13	12.7 (1/2")	
PS-16	15.9 (5/8")	
PS-19	19.1 (3/4")	
PS-22	22.2 (7/8")	
PS-25	25.4 (1")	
PS-28	28.5 (1 1/8")	
PS-36	35.0 (1 3/8")	

ORDER INFORMATION

KLS8-0203 - PS-05

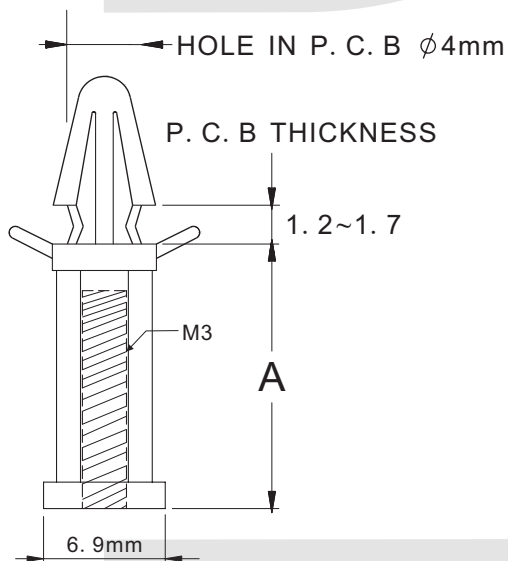
_____ Hight
 _____ PCB Support Series
 _____ Part Number

PCB Support Series

KLS8-0208 PCB Support Series

Material: UL approved Nylon 66, 94V-2
Drill 3.0mm hole on chasis before usage.

Unit:mm



Item No.	A	Packing
CS-5	5.0 (3/16")	100pcs (1000pcs)
CS-10	9.6 (3/8")	
CS-13	12.7 (1/2")	
CS-19	19.1 (3/4")	
CS-28	28.5 (1 1/8")	
CS-35	35.0 (1 3/8")	

ORDER INFORMATION

KLS8-0208 - CS-5

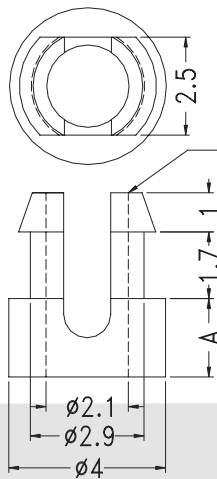
— Hight
— PCB Support Series
— Part Number

PCB Support Series

KLS8-0221 PCB Support Series

Material: UL approved Nylon 66, 94V-2

Unit:mm



HOLE IN CHASSIS: $\phi 3.0$
P.C.B THICKNESS 1.6

FOR M2 SCREW

Item No.	A	Packing
BLH-02	2.0	(1000PCS)
BLH-2.5	2.5	
BLH-03	3.0	
BLH-3.5	3.5	
BLH-04	4.0	
BLH-4.5	4.5	
BLH-05	5.0	
BLH-5.5	5.5	
BLH-06	6.0	

ORDER INFORMATION

KLS8-0221 - BLH-02

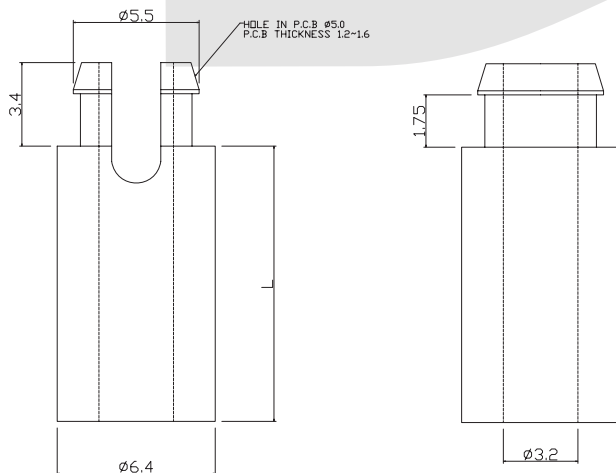
Hight
PCB Support Series
Part Number

PCB Support Series

KLS8-0236 PCB Support Series

Material: UL approved Nylon 66, 94V-2

Unit:mm



VIII

Item No.	A	Packing
PSX-03	3. 2	100PCS (1000PCS)
PSX-04	4	
PSX-05	4. 8	
PSX-06	6. 4	
PSX-08	8	
PSX-09	9. 5	
PSX-12	12. 7	
PSX-14	14. 2	
PSX-16	16	
PSX-25	25. 4	

ORDER INFORMATION

KLS8-0236 - PSX-03

— Hight
— PCB Support Series
— Part Number

PCB Support Series

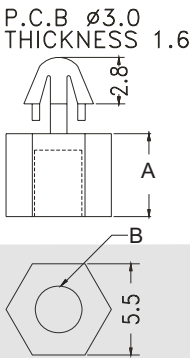
KLS8-0229 PCB Support Series

Material: UL approved Nylon 66, 94V-2
By hand to support P.C.B. Can be removed
for replacement easily.

Unit:mm

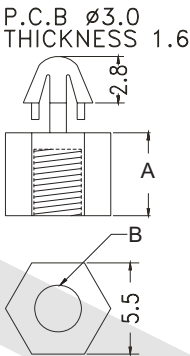


KLS8-0229A



ITEM NO.	A	B	PACKING
KLS8-0229A-BUT-05	5.0	2.5	2000PCS
KLS8-0229A-BUT-06	6.0	2.5	2000PCS
KLS8-0229A-BUT-07	7.0	2.5	2000PCS
KLS8-0229A-BUT-08	8.0	2.5	2000PCS
KLS8-0229A-BUT-09	9.0	2.5	2000PCS
KLS8-0229A-BUT-10	10.0	2.5	2000PCS
KLS8-0229A-BUT-12	12.0	2.5	2000PCS

KLS8-0229B



ITEM NO.	A	B	PACKING
KLS8-0229B-BUR-05	5.0	M3	2000PCS
KLS8-0229B-BUR-06	6.0	M3	2000PCS
KLS8-0229B-BUR-07	7.0	M3	2000PCS
KLS8-0229B-BUR-08	8.0	M3	2000PCS
KLS8-0229B-BUR-09	9.0	M3	2000PCS
KLS8-0229B-BUR-10	10.0	M3	2000PCS
KLS8-0229B-BUR-12	12.0	M3	2000PCS

ORDER INFORMATION

KLS8-0229A - BUT-05

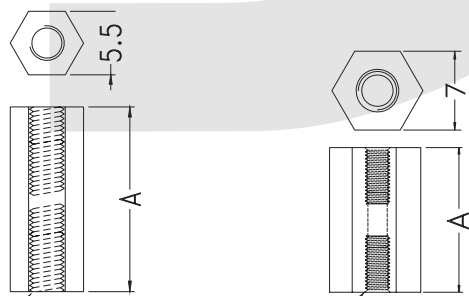
— Hight
— PCB Support Series
— Part Number

PCB Support Series

KLS8-0215 PCB Support Series

Material: UL approved Nylon 66, 94V-2

Unit:mm



M3 X 0.4 P P E D M4 X 0.4 P P E D



VIII

Model No.	A	Packaging
M3-04	4.0	1000PCS
M3-05	5.0	
M3-06	6.0	
M3-07	7.0	
M3-08	8.0	
M3-09	9.0	
M3-10	11.0	
M3-11	11.0	
M3-12	12.0	
M3-13	13.0	
M3-14	14.0	
M3-15	15.0	
M3-16	16.0	
M3-17	17.0	
M3-18	18.0	
M3-19	19.0	
M3-20	20.0	

Model No.	A	Packaging
M3-22	22.0	1000PCS
M3-25	25.0	
M3-27	27.0	
M3-30	30.0	
M3-32	32.0	
M3-35	35.0	
M3-38	38.0	
M3-42	42.0	
M3-45	45.0	
M3-47	47.0	
M3-49	49.0	
M3-50	50.0	

Model No.	A	Packaging
M4-06	6.0	1000PCS
M4-08	8.0	
M4-09	9.0	
M4-9.5	9.5	
M4-10	10.0	
M4-12A	12.0	
M4-12	12.7	
M4-14	14.0	
M4-15	15.0	
M4-16	16.0	
M4-17	17.0	
M4-18	18.0	
M4-19	19.0	
M4-20	20.0	
M4-22	22.0	
M4-25	25.0	
M4-30	30.0	

ORDER INFORMATION

KLS8-0215 - M3-04

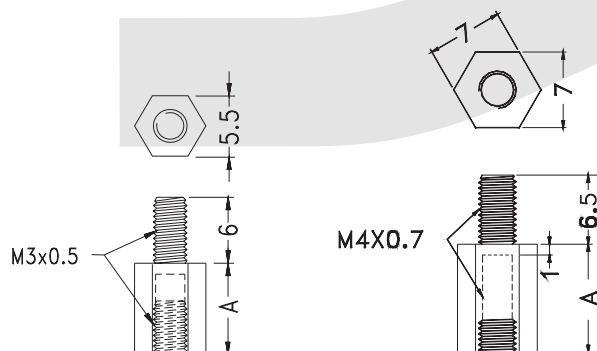
_____ Hight
 _____ PCB Support Series
 _____ Part Number

PCB Support Series

KLS8-0214 PCB Support Series

Material: UL approved Nylon 66, 94V-2

Unit:mm



VIII

Model No.	A	Packaging
M3-04	4.0	1000PCS
M3-05	5.0	
M3-06	6.0	
M3-07	7.0	
M3-08	8.0	
M3-09	9.0	
M3-10	11.0	
M3-11	11.0	
M3-12	12.0	
M3-13	13.0	
M3-14	14.0	
M3-15	15.0	
M3-16	16.0	
M3-17	17.0	
M3-18	18.0	
M3-19	19.0	
M3-20	20.0	

Model No.	A	Packaging
M3-22	22.0	1000PCS
M3-25	25.0	
M3-27	27.0	
M3-30	30.0	
M3-32	32.0	
M3-35	35.0	
M3-38	38.0	
M3-42	42.0	
M3-45	45.0	
M3-47	47.0	
M3-49	49.0	
M3-50	50.0	

Model No.	A	Packaging
M4-06	6.0	1000PCS
M4-08	8.0	
M4-09	9.0	
M4-9.5	9.5	
M4-10	10.0	
M4-12A	12.0	
M4-12	12.7	
M4-14	14.0	
M4-15	15.0	
M4-16	16.0	
M4-17	17.0	
M4-18	18.0	
M4-19	19.0	
M4-20	20.0	
M4-22	22.0	
M4-25	25.0	
M4-30	30.0	

ORDER INFORMATION

KLS8-0214 - M3-04

— Hight
— PCB Support Series
— Part Number

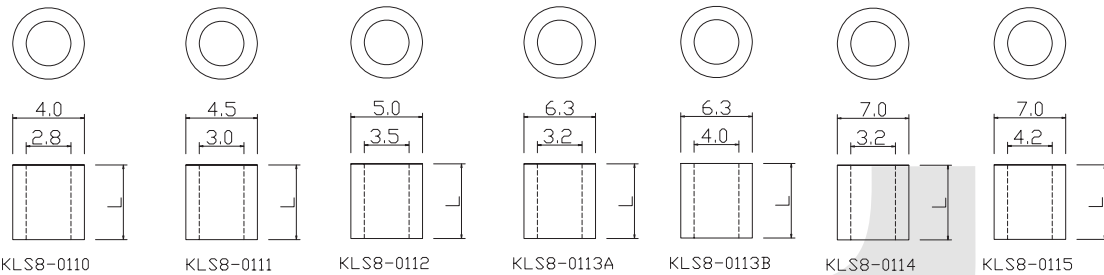
PCB Support Series

KLS8-0110 PCB Support Series

Material: UL approved Nylon 66, 94V-2

Unit:mm

Part No.	A	B
KLS8-0110-LED-1.5	4.0	2.8
KLS8-0111-LED-1.5	4.5	3.0
KLS8-0112-LED-1.5	5.0	3.5
KLS8-0113A-LED-1.5	6.3	3.2
KLS8-0113B-LED-1.5	6.3	4.0
KLS8-0114-LED-1.5	7.0	3.2
KLS8-0115-LED-1.5	7.0	4.2



Model No.	L	Packaging
LED-1.5	1.5	2000
LED-2	2.0	
LED-2.5	2.5	
LED-3	3.0	
LED-3.5	3.5	
LED-4	4.0	
LED-4.5	4.5	
LED-5	5.0	
LED-5.5	5.5	
LED-6	6.0	
LED-6.5	6.5	
LED-6.8	6.8	
LED-7	7.0	
LED-7.5	7.5	
LED-8	8.0	
LED-8.5	8.5	
LED-8.8	8.8	
LED-9	9.0	

Model No.	L	Packaging
LED-9.5	9.5	2000
LED-10	10.0	
LED-10.5	10.5	
LED-11	11.0	
LED-11.5	11.5	
LED-12	12.0	
LED-12.5	12.5	
LED-13	13.0	
LED-13.5	13.5	
LED-14	14.0	
LED-14.5	14.5	1000
LED-15	15.0	
LED-15.5	15.5	
LED-16	16.0	
LED-16.5	16.5	
LED-17	17.0	
LED-17.5	17.5	
LED-18	18.0	

Model No.	L	Packaging
LED-18.5	18.5	1000
LED-19	19.0	
LED-19.5	19.5	
LED-20	20.0	
LED-20.5	20.5	
LED-21	21.0	
LED-21.5	21.5	
LED-22	22.0	
LED-22.5	22.5	
LED-23	23.0	
LED-23.5	23.5	
LED-24	24.0	
LED-29.5	29.5	
LED-30	30.0	
LED-24.5	24.5	
LED-25	25.0	
LED-25.5	25.5	
LED-26	26.0	

ORDER INFORMATION

KLS8-0110 - LED-1.5

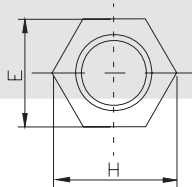
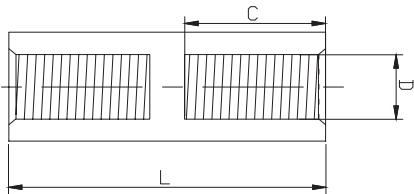
— Hight
— PCB Support Series
— Part Number

PCB Support Series

KLS8-DBK Series

Specification parameters

Materials: Brass
Plating: according to customer requirements
Size:
D: M2.5; M3; M4; 4#40; 6#32
E: 5; 6
H:5.5; 7
L:According to customer requirements
B:According to customer requirements
C:According to customer requirements



TYPE	D	E	H	L
KLS1-DBK-M2. 5	M2. 5	5-0. 2	5. 5-0. 2	
KSL1-DBK-M3	M3. 0	5-0. 2	5. 5-0. 2	
KLS1-DBK-M4	M4. 0	6-0. 2	7-0. 2	
KLS1-DBK-4#40	4#40	5-0.2	5. 5-0. 2	
KLS1-DBK-6#32	6#32	6-0. 2	7-0. 2	

ORDER INFORMATION

Product NO.: KLS8-DBK-M3-E5.0-L10

Pos. No. _____
Series No. _____ See drawings

PCB Support Series

KLS8-DBL Series

Specification parameters

Materials: Brass

Plating: according to customer requirements

Size:

D: M2.5; M3; M4; 4#40; 6#32

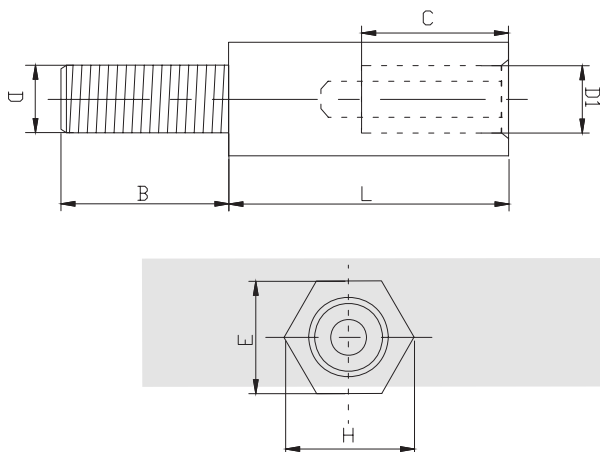
E: 5; 6

H: 5.5; 7

L: According to customer requirements

B: According to customer requirements

C: According to customer requirements



TYPE	D	E	H	L
KLS1-DBL-M2.5	M2.5	5-0.2	5.5-0.2	
KSL1-DBL-M3	M3.0	5-0.2	5.5-0.2	
KLS1-DBL-M4	M4.0	6-0.2	7-0.2	
KLS1-DBL-4#40	4#40	5-0.2	5.5-0.2	
KLS1-DBL-6#32	6#32	6-0.2	7-0.2	

ORDER INFORMATION

Product NO.: KLS8-DBL-M3-E5.0-L10

Pos. No.

Series No.

See drawings

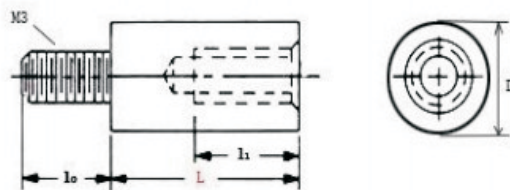
PCB Support*PCB Spacers Series

KLS8-PCSN

VIII



Brass PCB Support , M3 , Dia. 5.5mm



Russia P/N:	KLS P/N	Screw	Dia	D	L0	L1	L
PCSN-6 (5mm)	KLS8-PCSN-6	M3	5.5	5.5	6	6	6
PCSN-10 (5mm)	KLS8-PCSN-10	M3	5.5	5.5	6	6	10
PCSN-15 (5mm)	KLS8-PCSN-15	M3	5.5	5.5	6	6	15
PCSN-20 (5mm)	KLS8-PCSN-20	M3	5.5	5.5	6	6	20
PCSN-25 (5mm)	KLS8-PCSN-25	M3	5.5	5.5	6	6	25
PCSN-30 (5mm)	KLS8-PCSN-30	M3	5.5	5.5	6	6	30

Order Information

Product No.: KLS8-PCSN

Part No.

Series No.

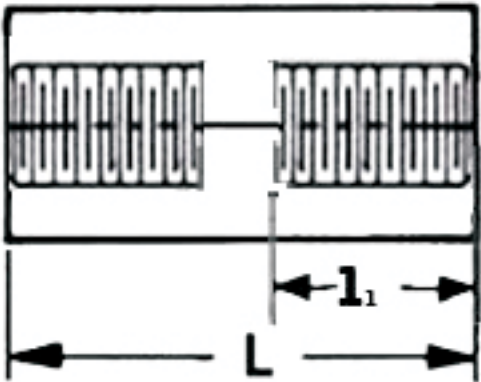
PCB Support*PCB Spacers Series

KLS8-PCSS



Brass PCB Support , M3 Screw , Dia. 5.5mm

KLS P/N	Material	Screw	D/mm	L1/mm	L/mm
KLS8-PCSS-6	Copper	M3	5.5	6.0	6.0
KLS8-PCSS-10	Copper	M3	5.5	6.0	10
KLS8-PCSS-15	Copper	M3	5.5	6.0	15
KLS8-PCSS-20	Copper	M3	5.5	6.0	20
KLS8-PCSS-25	Copper	M3	5.5	6.0	25
KLS8-PCSS-30	Copper	M3	5.5	6.0	30



Order Information

Product No.: KLS8-PCSS

Part No.

Series No.