

RECOMMENDED PC BOARD LAYOUT

(FRONT EDGE OF CONNECTOR)

REV	DESCRIPTION	APPRO.	CHANGE	DATE
A0	原始尺寸			

SPECIFICATION:
MATERIAL:
 HOUSING: PA6T 30% GF UL 94V-0
 COLOR: BLACK
 CONTACT: Bronze C5191-H,T=0.25mm
 SHELL: BRASS C2680R-H,T=0.30mm
 FINISH
 CONTACT: 3u" GOLD/TIN PLATING ON CONTACT AREA
 100u" MIN. TIN-LEAD PLATING ON SOLDERAILS
 50u" MIN. NICKEL UNDERPLATING OVERALL
 PEG: 100u" MIN. TIN-LEAD PLATING ON SOLDERAILS
 50u" MIN. NICKEL UNDERPLATING OVERALL

QUALITY SYMBOLS	GENERAL TOLERANCES (UNLESS SPECIFIED)		SIGNATORY		DATE
	MM	INCH	DRAW		
▲ "0	0~5 ±0.10	0~5 1/16	DESIGN		
	5~10 ±0.15	5~10 1/8	CHECK		
	10~20 ±0.20	10~20 1/4	APPRO.		
△ "0	20~ ±0.25	20~ 1/2			

KLS Electronic CO.,LTD	
TITLE: E_SATA 7P - E (DIP Type)	
PART NO.	
DWG NO.	
(OLD)PART NO.	
SCALE 1:1	UNIT:mm A4 SHEET: 1 of 1

THIS DRAWING CONTAINS INFORMATION THAT IS PROPRIETARY TO ***

INCORPORATED AND SHOULD NOT BE USED WITHOUT WRITTEN PERMISSION

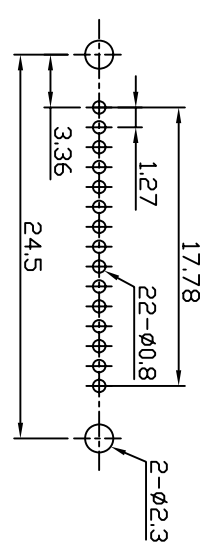
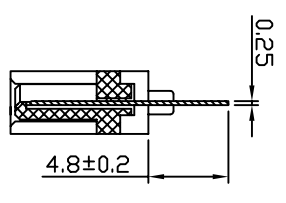
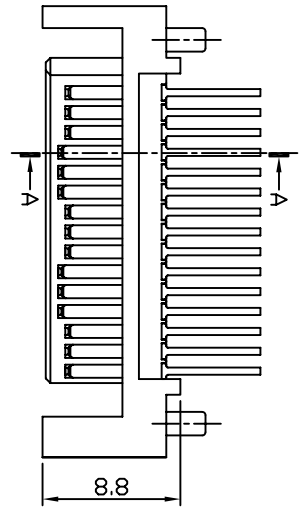
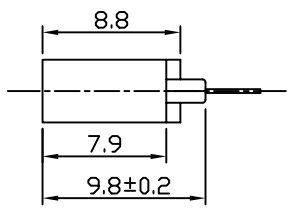
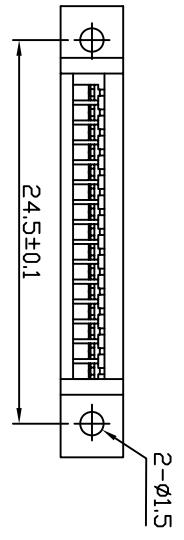
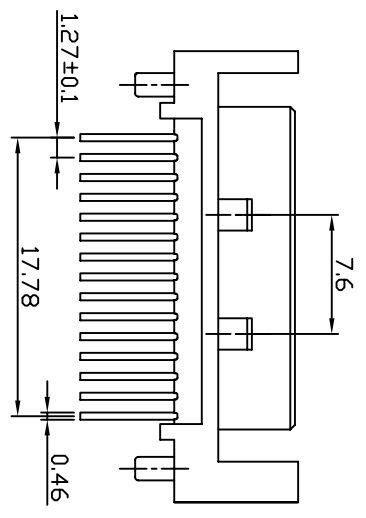
SPECIFICATIONS

1. MATERIAL:

Housing: LCP UL 94V-0
 Color: Black
 Contact: Phosphor bronze
 Peg: Brass

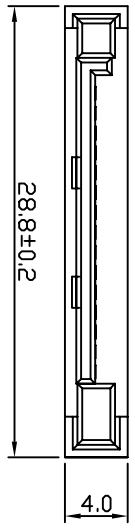
2. FINISH:

Contact: 3u" Gold/Tin plating on contact area
 100u" min. Tin-Lead Plating on
 soldertails
 50u" min. Nickel underplating
 over all
 PEG: 100u" min. Tin-Lead plating on
 soldertails
 50u" min. Nickel underplating over
 all



A-A SECTION

PCB LAYOUT



UNLESS OTHERWISE SPECIFIED TOLERANCE
 ANG 0
 ±0.3
 ±0.2
 ±0.05
 .00

KLS Electronic CO., LTD

SCALE: UNIT: mm

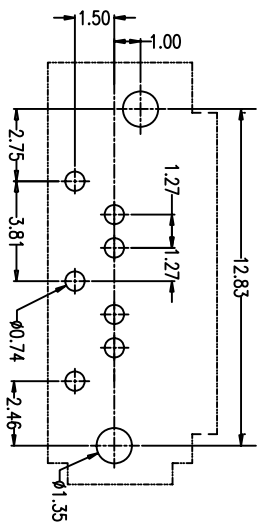
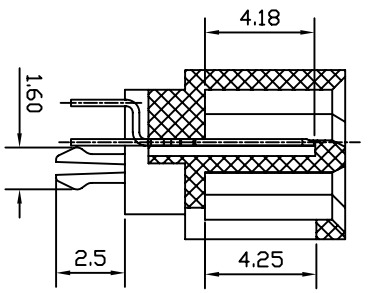
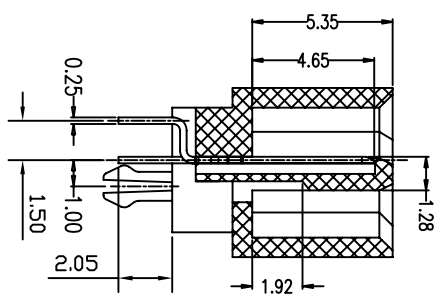
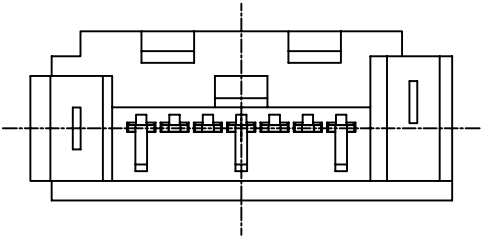
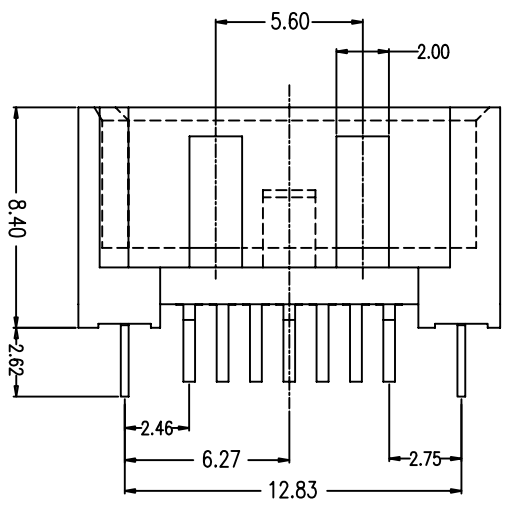
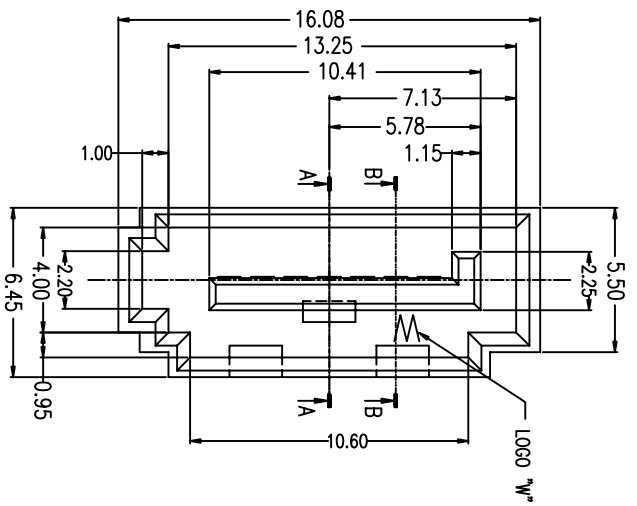
DRAWN: LI BEI LIN 30/10/08 DRAWN NAME:

CHECKED: APPROVED: / / PRODUCT NO: SATA 15P/in

SIZE: A4 REV: A FILE NAME:

SATA 15P 180度 公座

1	2	3	4	5	6	7	8	9
---	---	---	---	---	---	---	---	---



P.C.B. Layout
(T=1.60mm)

NOTES:

***Material**

Housing: LCP or Nylon46, UL 94V-0 rated, Color: Black.
 Color: Brass
 Contact: Brass
 Plating: Gold Over Nickel on Contact Area;
 Tin Plating on Solder Tail

***Mechanical**

Insertion Force: 45N Max
 Withdrawal Force: 10N Min
 Durability: 5000Cycles

***Electrical Specification**

Current Rating: 1.5Ampere per contact
 Contact Resistance: 30Milliohms max
 Insulation Resistance: 1000 megohms min
 Dielectric Withstanding Voltage: 500V AC

***Environmental**

Operating Temperature: -55° C to +125° C

UNLESS OTHERWISE SPECIFIED TOLERANCE	
x.	±0.3
x.x	±0.2
x.xx	±0.1
x.xxx	±0.05
SCALE	UNIT
	mm

KLS Electronic CO., LTD

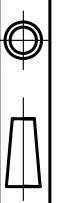
DRAWN: LI BEI LIN
 CHECKED: 17/01/08

DRAWN NAME

APPROVED

PRODUCT NO.

SATA 7Pin 全包 B型



SIZE: A4
 REV: A

PILE NAME:

1	2	3	4	5	6	7	8	9
A	B	C	D	E	F	G	A	B

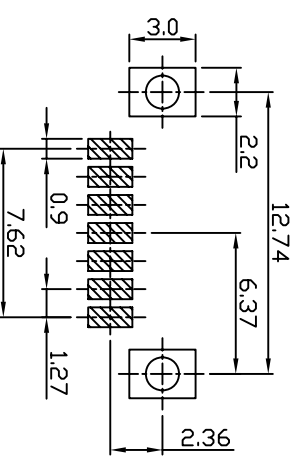
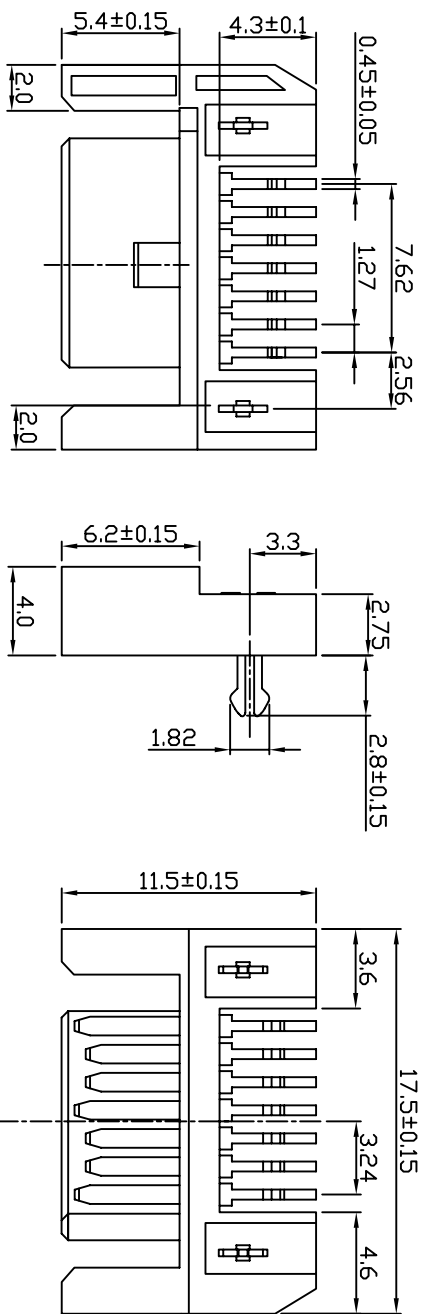
SPECIFICATIONS

1. MATERIAL:

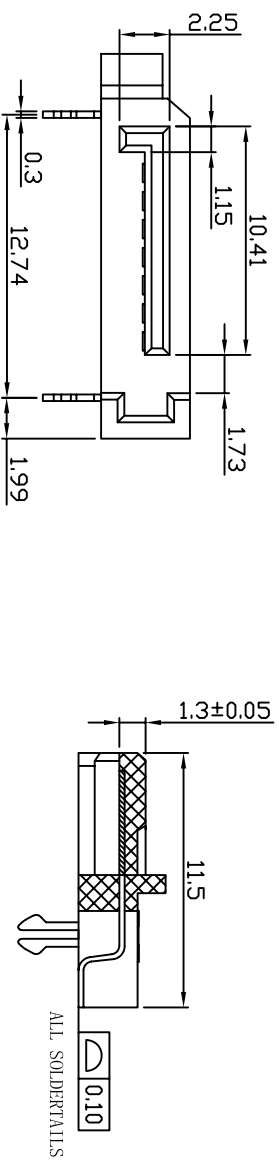
Housig: LCP UL 94V-0
 Color: Black
 Contact: Phosphor bronze
 Peg: Brass

2. FINISH:

Contact: 3u" Gold/Tin plating on contact area
 100u" min. Tin-Lead Plating on soldertails
 50u" min. Nickel underplating over all
 PEG: 100u" min. Tin-Lead plating on soldertails
 50u" min. Nickel underplating over all



PCB LAYOUT



KLS Electronic CO., LTD

SCALE	UNLESS OTHERWISE SPECIFIED TOLERANCE	ANG	±5°
		0	±0.2
		.00	±0.05
DRAWN	UNIT: mm	DRAWN NAME:	
LI BET LIN	16/08/08	DRAWN NAME:	
CHECKED		PRODUCT NO.:	
APPROVED		FILE NAME:	

SATA 7P 板端正向90度 SMT型

A	1	2	3	4	5	6	7	8	9
---	---	---	---	---	---	---	---	---	---

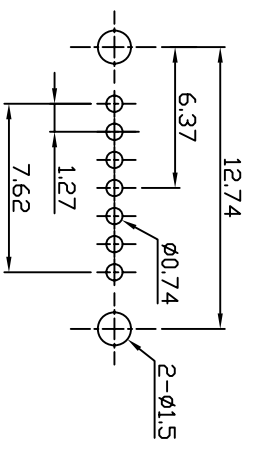
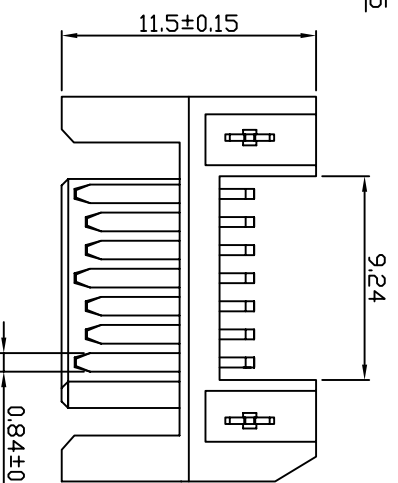
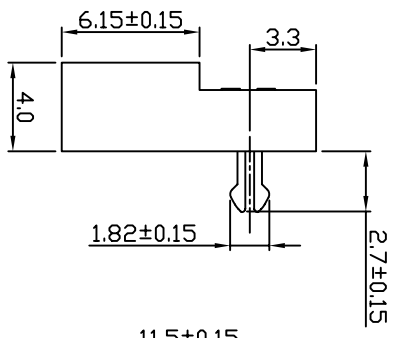
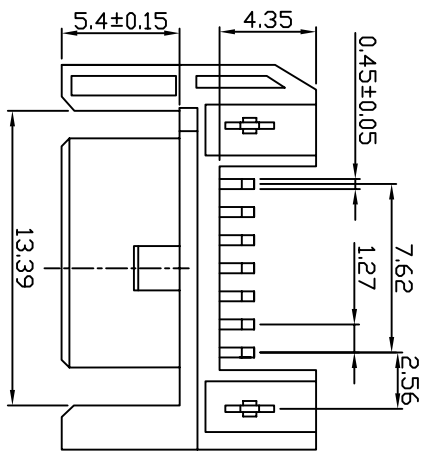
SPECIFICATIONS

1. MATERIAL:

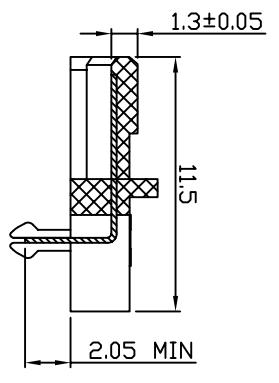
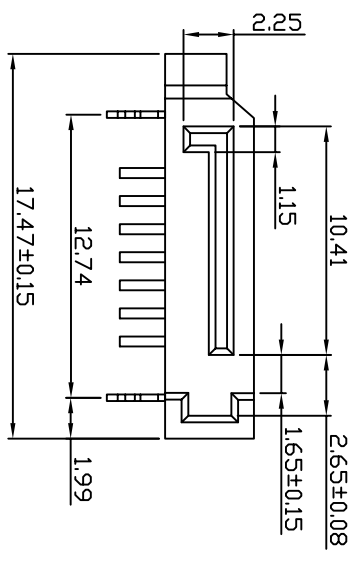
Housing: LCP UL 94V-0
 Color: Black
 Contact: Phosphor bronze
 Peg: Brass

2. FINISH:

Contact: 3u" Gold/Tin plating on contact area
 100u" min. Tin-Lead Plating on soldertails
 50u" min. Nickel underplating over all
 PEG: 100u" min. Tin-Lead plating on soldertails
 50u" min. Nickel underplating over all



PCB LAYOUT



UNLESS OTHERWISE SPECIFIED TOLERANCE
 ANG 0 0.05
 0.02 0.05
 0.005 0.01

KIS Electronic CO., LTD

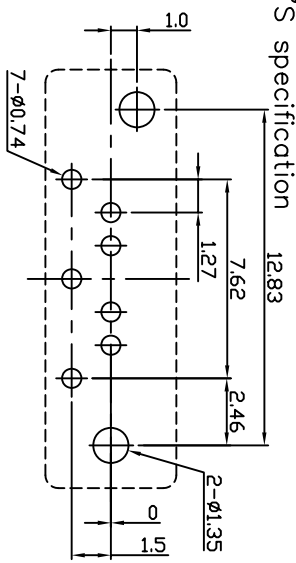
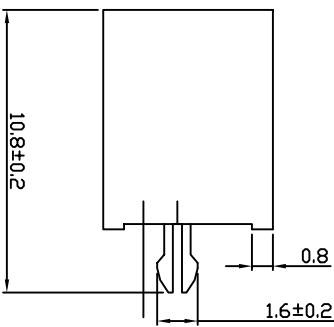
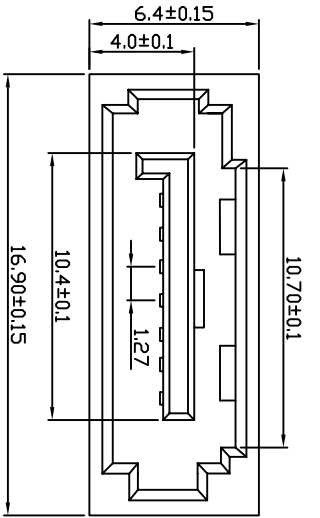
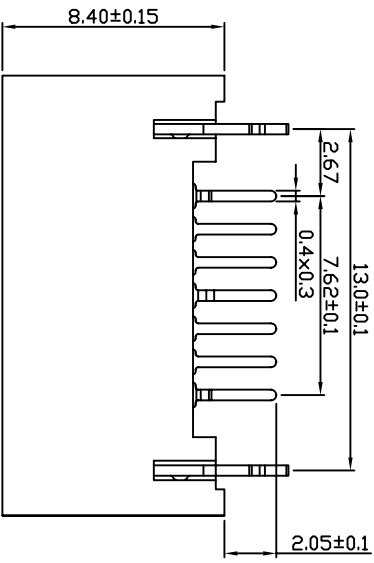
SCALE: UNIT: mm

DRAWN: LI BEI LIN 20/06/08
 CHECKED: / /
 APPROVED: / /

SIZE: A4 REV: A

SATA 7P 板端正向90度 DIP 型

PRODUCT NO.:
 FILE NAME:



Recommend PC Board Layout
(Top layer, Thickness:1.60mm)

NOTES:

1: MATERIAL:

- 1.1 Housing: Thermoplastic, UL 94-V0, Color: See table.
- 1.2 Contact: Copper alloy, 50u" min. Nickel plating Overall: 100u" min. Tin on solder tail; Gold plating (see table) on contact area.
- 1.3 Hook: Copper alloy, 50u" min. Nickel and 100u" min Tin plating overall.

2: ELECTRICAL:

- 2.1 Low level contact resistance: Initially 25 milliohms max.
- 2.2 Insulation resistance: 1000 megaohms at sea level
- 2.3 Dielectric withstanding voltage: 500V RMS min.

3: According to the environmental requirement, Warranty The controlled hazardous substance should be meet ROHS's specification

KLS Electronic CO., LTD

SCALE	UNLESS OTHERWISE SPECIFIED TOLERANCE
	ANG ±.5°
	0 ±0.3
	0.00 ±0.2
	0.00 ±0.05
UNIT:	mm

DRAWN: Li Bei Lin
CHECKED: /
APPROVED: /

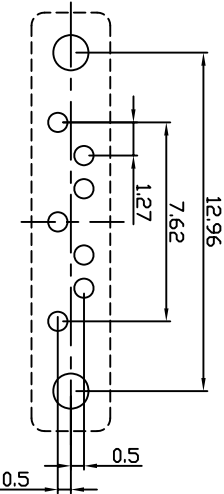
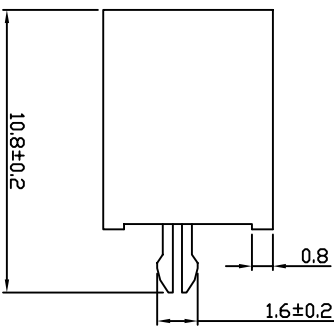
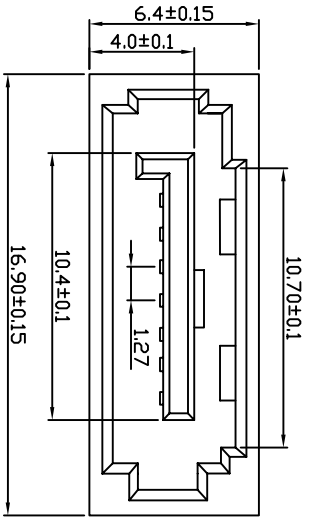
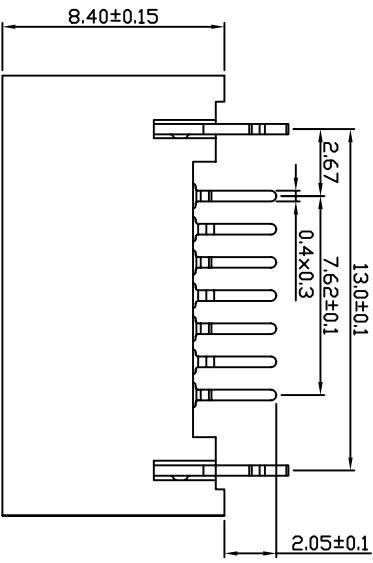
DATE: 08/10/07
DRAWN NAME: /
PRODUCT NO: /

SATA 7P

FILE NAME: /

SATA 7P 全包不开窗 B型

1	2	3	4	5	6	7	8	9
---	---	---	---	---	---	---	---	---



Recommend PC Board Layout
(Top layer, Thickness:1.60mm)

NOTES:

1: MATERIAL:

- 1.1 Housing: Thermoplastic, UL 94-V0, Color: See table.
- 1.2 Contact: Copper alloy, 50u" min. Nickel plating Overall; 100u" min. Tin on solder tail; Gold plating (see table) on contact area.
- 1.3 Hook: Copper alloy, 50u" min. Nickel and 100u" min Tin plating overall.

2: ELECTRICAL:

- 2.1 Low level contact resistance: Initially 25 milliohms max.
- 2.2 Insulation resistance: 1000 megaohms at sea level
- 2.3 Dielectric withstanding voltage: 500V RMS min.

3: According to the environmental requirement, Warranty The controlled hazardous substance should be meet ROHS'S specification

K/S Electronic co., LTD

SCALE	UNLESS OTHERWISE SPECIFIED TOLERANCE
	ANG ±.5°
	0 ±0.3
	0.00 ±0.2
	0.00 ±0.05
UNIT:	mm

DRAWN NAME: Li Bei Lin
DATE: 08/10/07

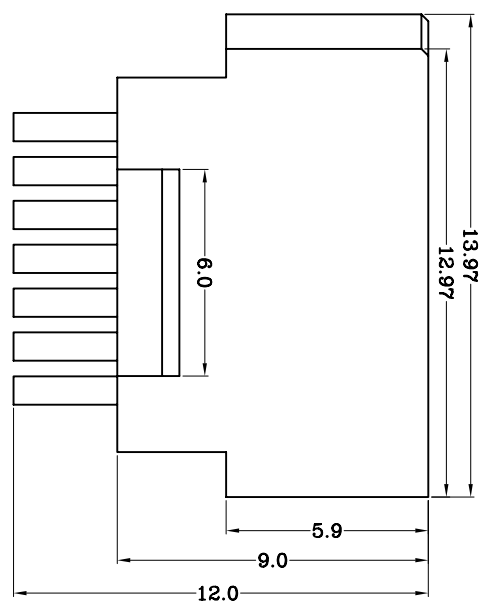
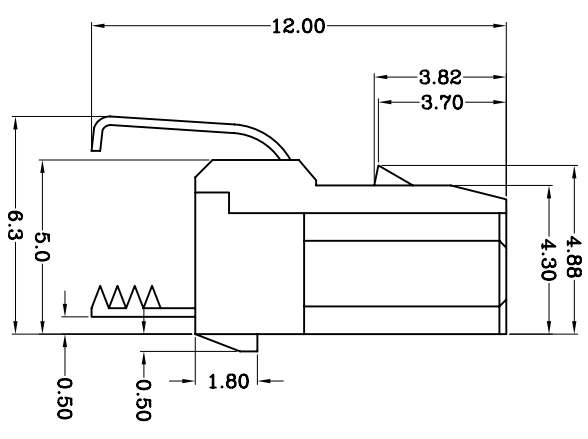
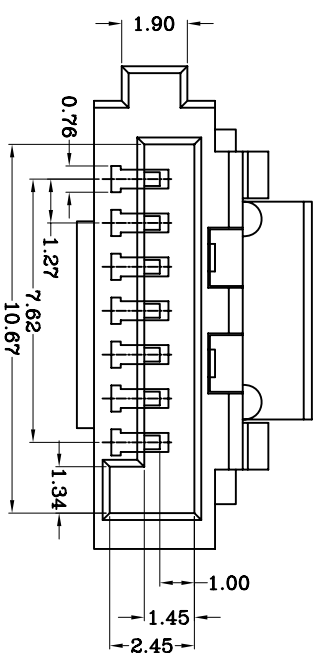
CHECKED: /
APPROVED: /
PRODUCT NO.: SATA 7P
DRAWN NAME: Li Bei Lin
DATE: 08/10/07

SIZE: A4
REV: A
FILE NAME:

SATA 7P 全包不开窗 A型

1 2 3 4 5 6 7 8 9

A B C D E F G



SPECIFICATIONS

1. MATERIAL:

Housig: PBT UL 94V-0
 Color: Black
 Contact: Phosphor bronze
 Peg: Brass

2. FINISH:

Contact: 3u" Gold/Tin plating on contact
 ared
 100u" min. Tin-Lead Plating
 on soldertails
 50u" min. Nickel underplating
 over all
 PEG: 100u" min. Tin-Lead plating on
 soldertails
 50u" min. Nickel underplating
 over all

KLS Electronic CO., LTD

UNLESS OTHERWISE SPECIFIED TOLERANCE	OTHERWISE
ANG 0	±5°
0.00	±0.3
0.00	±0.2
0.00	±0.05
SCALE	UNIT: mm

DRAWN: Li Bei Lin 17/06/08

CHECKED: /

APPROVED: /

SIZE: A4 REV: A

DRAWN NAME:

SATA 7P A TYPE

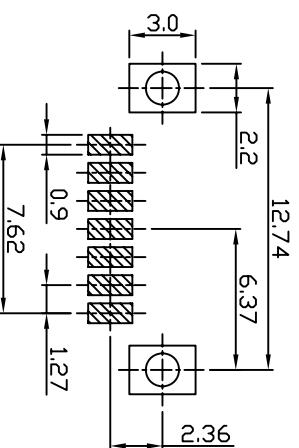
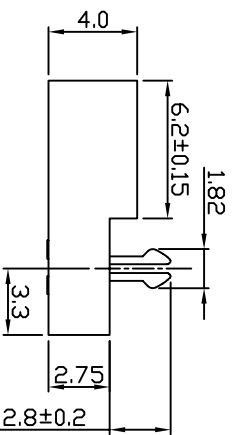
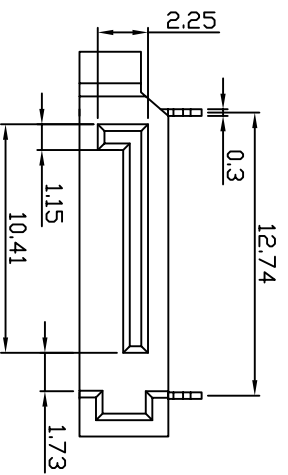
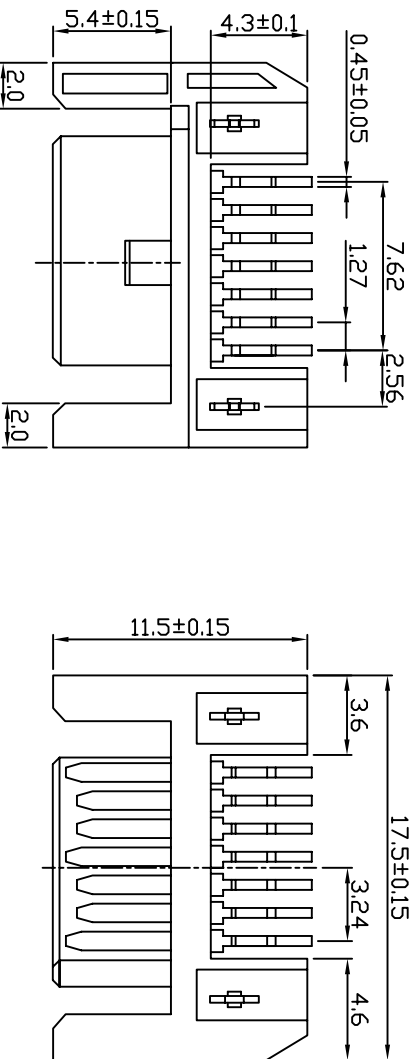
PRODUCT NO.:

FILE NAME:

SATA 7P 焊线式

SPECIFICATIONS

Current Rating: 3Amps
 Insulator Resistance: 5000mΩ Min
 Dielectric Withstanding: AC 500V
 Operating Temperature: -40°to+105°
 Contact Material: Copper alloy
 Insrlator Material: Polyester,UL 94V-0 LCP
 Finish : Tin,Gold or Duplex plated
 Standard : Gold flash all over
 Max.Processing Temp: 230C*for 30-60seconds(260C*for 10 secinds)



PCB LAYOUT

KLS Electronic CO.,LTD

UNLESS OTHERWISE SPECIFIED TOLERANCE
 ANG 0 ±.5°
 .00 ±.02
 .00 ±.005

SCALE UNIT: mm

DRAWN 李北林 25/04/08

CHECKED

APPROVED

DRAWN NAME

PRODUCT NO.

FILE NAME:

SATA 7P 板端反向90度 SMT型

A

1

2

3

4

5

6

7

8

9

A

SPECIFICATIONS

1. MATERIAL:

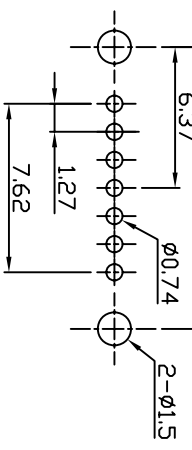
Housig: LCP UL 94V-0
 Color: Black
 Contact: Phosphor bronze
 Peg: Brass

2. FINISH:

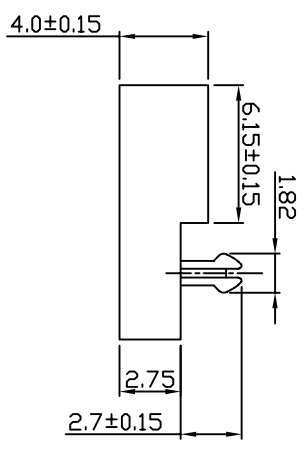
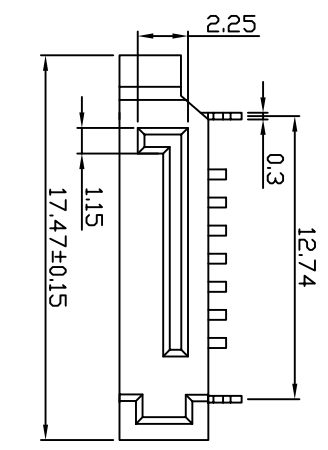
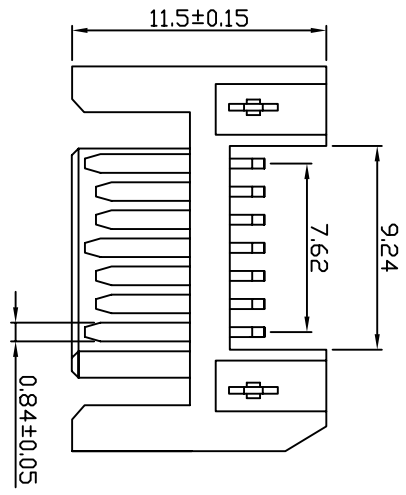
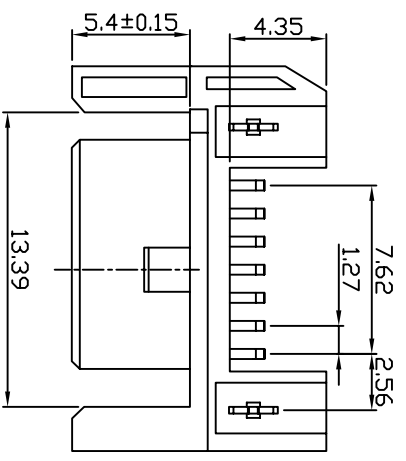
Contact: 3u" Gold/Tin plating on contact area
 100u" min. Tin-Lead Plating on soldertails
 50u" min. Nickel underplating

over all
 PEG: 100u" min. Tin-Lead plating on soldertails

over all
 50u" min. Nickel underplating



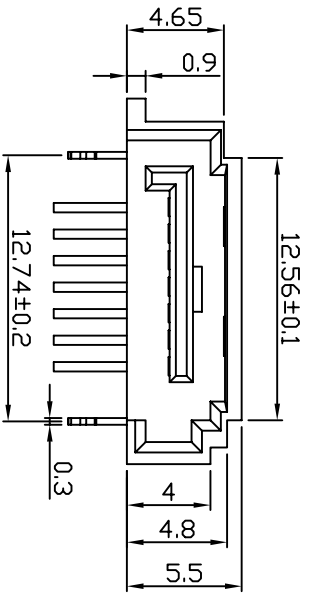
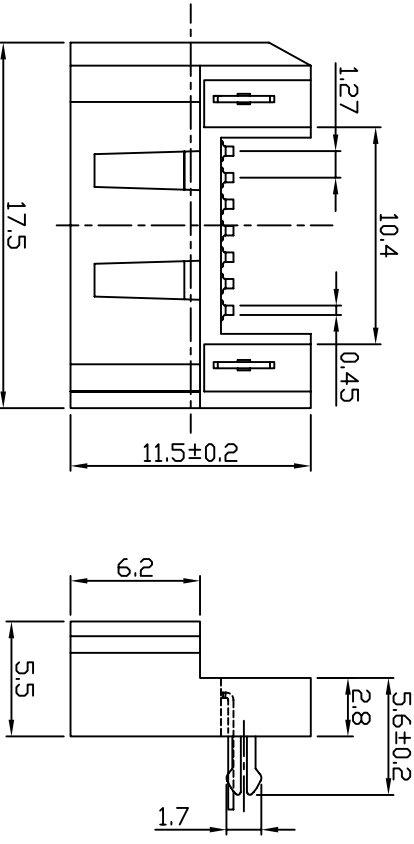
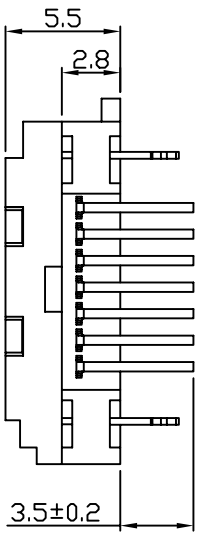
PCB LAYOUT



UNLESS OTHERWISE SPECIFIED TOLERANCE		KLS Electronic CO., LTD	
ANG	±5°	SCALE	UNIT: mm
0	±0.3	DRAWN	李北林
.00	±0.2	CHECKED	20/06/08
	±0.05	APPROVED	PRODUCT NO.:
		SIZE A4	REV A
		FILE NAME:	

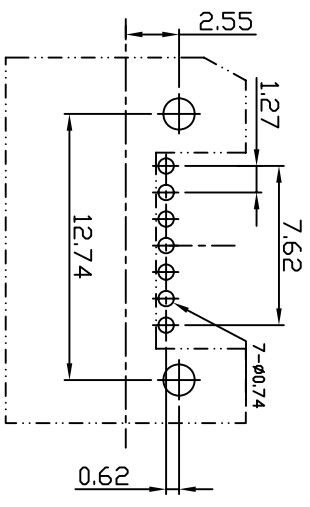
SATA 7P 板端反向90度 DIP型

A	1	2	3	4	5	6	7	8	9
---	---	---	---	---	---	---	---	---	---



- NOTES:
- 1: MATERIAL:
- 1.1 Housing: Thermoplastic, UL 94-V0, Color: See table.
 - 1.2 Contact: Copper alloy, 50u" min. Nickel plating Overall: 100u" min. Tin on solder tail; Gold plating (see table) on contact area.
 - 1.3 Hook: Copper alloy, 50u" min. Nickel and 100u" min Tin plating overall.

- 2: ELECTRICAL:
- 2.1 Low level contact resistance: Initially 25 milliohms max.
 - 2.2 Insulation resistance: 1000 megaohms at sea level
 - 2.3 Dielectric withstanding voltage: 500V RMS min.
- 3: According to the environmental requirement, Warranty The controlled hazardous substance should be meet ROHS'S specification



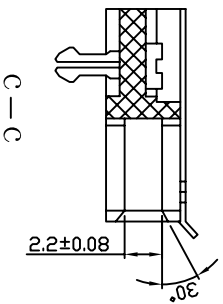
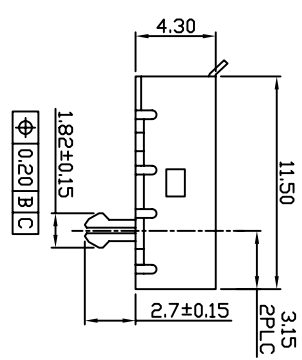
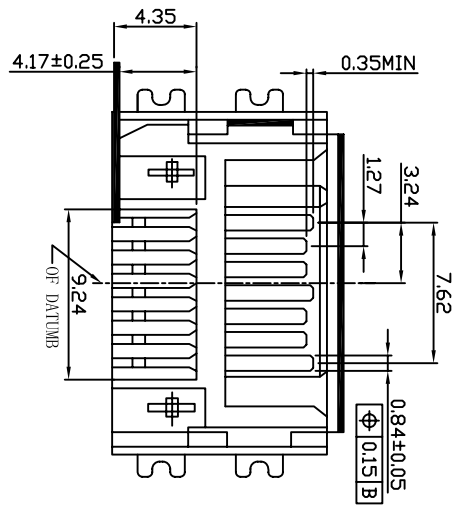
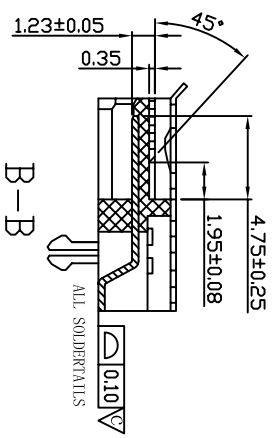
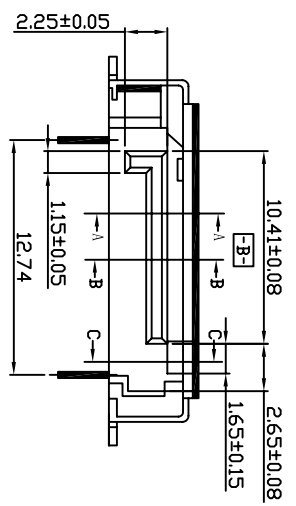
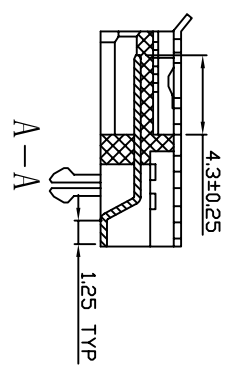
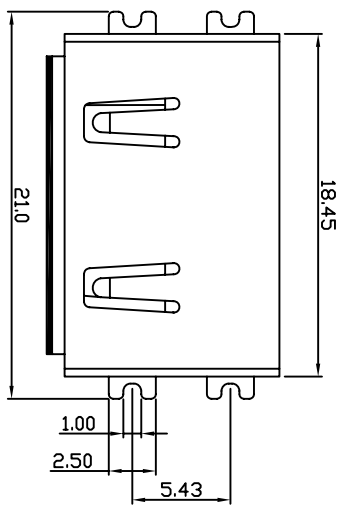
Recommend PC Board Layout
(Top layer, Thickness: 1.60mm)

KLS Electronic CO., LTD

SCALE	UNLESS OTHERWISE SPECIFIED TOLERANCE	±0.3
	ANG	0.00
		±0.05
DRAWN	UNIT:	mm
LI BEI LIN	DATE:	23/02/09
CHECKED	PRODUCT NO.	Pin header 2.0mm
APPROVED	REV A	

SATA 7P 半包开窗 90°

1	2	3	4	5	6	7	8	9
A	B	C	D	E	F	G	A	B

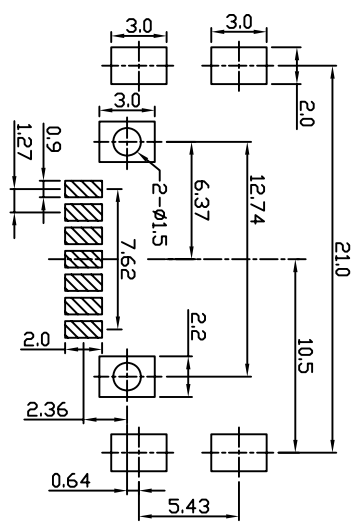


SPECIFICATIONS

1. MATERIAL:
 Housing: LCP UL 94V-0
 Color: Black
 Contact: Phosphor bronze
 Peg: Brass

2. FINISH:
 Contact: 3u" Gold/Tin plating on contact area
 100u" min. Tin-Lead Plating on solder tails

50u" min. Nickel underplating over all
100u" min. Tin-Lead plating on solder tails
50u" min. Nickel underplating over all



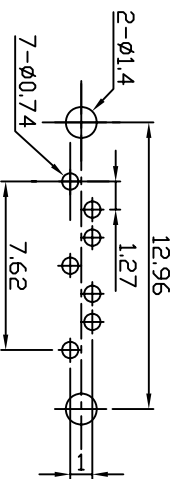
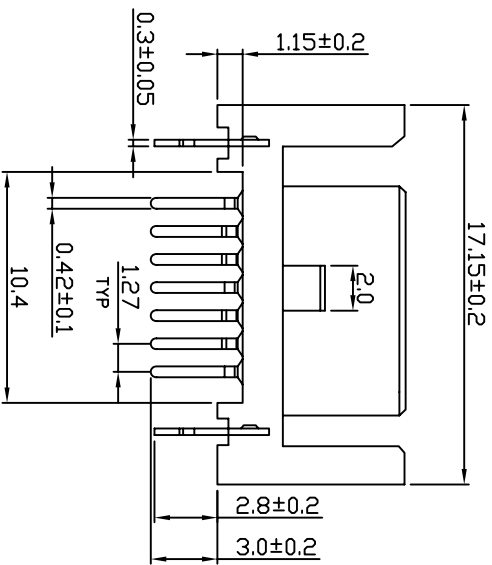
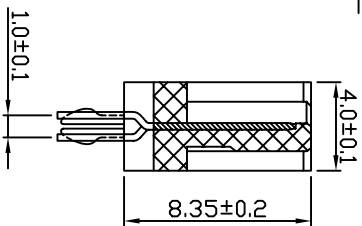
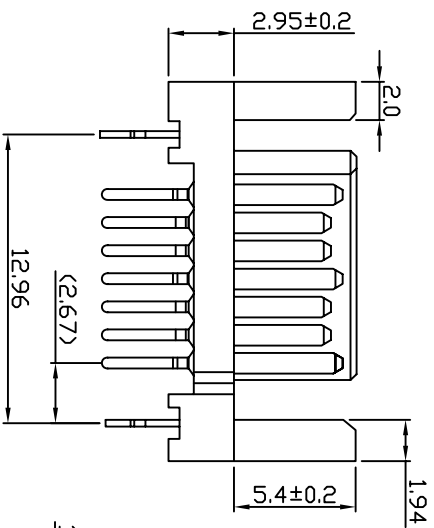
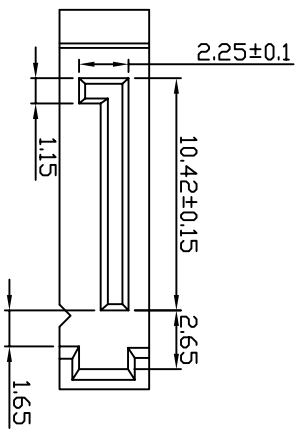
PCB LAYOUT

K/S Electronic Co., LTD

UNLESS OTHERWISE SPECIFIED TOLERANCE	±.51
ANG	0
	±.02
	±.005
SCALE	UNIT: mm
DRAWN	LI BEI LIN
CHECKED	16/08/08
DRAWN NAME:	
CHECKED	
APPROVED	
PRODUCT NO.:	
SIZE A4	REV A
FILE NAME:	

SATA 7P 板端加铁90度SMT型

1	2	3	4	5	6	7	8	9
A	B	C	D	E	F	G	A	B



SPECIFICATIONS

Current Rating: 3Amps
 Insulator Resistance: 5000mΩ Min
 Dielectric Withstanding: AC 500V
 Operating Temperature: -40°to+105°
 Contact Material: Copper alloy
 Insrator Material: Polyester,UL 94V-0 LCP
 Finish : Tin,Gold or Duplex plated
 Standard : Gold flash all over
 Max.Processing Temp: 230C*for 30-60seconds(260C*for 10 secinds)

KLS Electronic CO.,LTD

UNLESS OTHERWISE SPECIFIED TOLERANCE
 ANG 0
 .00
 ±.5°
 ±0.3
 ±0.2
 ±0.05
 UNIT: mm

DRAWN 李北林 08/10/07
 CHECKED / /
 APPROVED / /

SCALE: mm
 DRAWN NAME: Pin header 2.0mm

PRODUCT NO.:
 FILE NAME:

SATA 7P A TYPE 双柱插板式

1	2	3	4	5	6	7	8	9
A	B	C	D	E	F	G	A	B

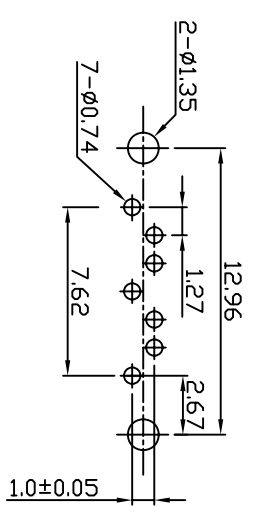
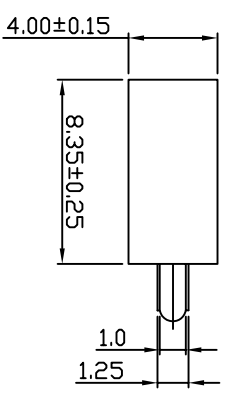
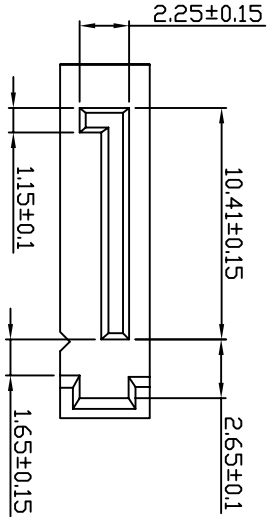
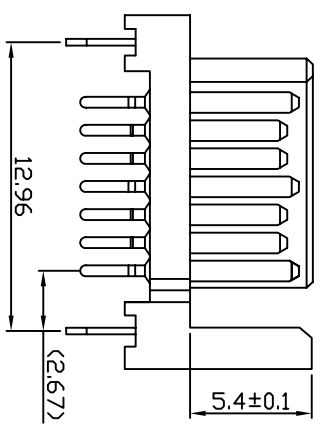
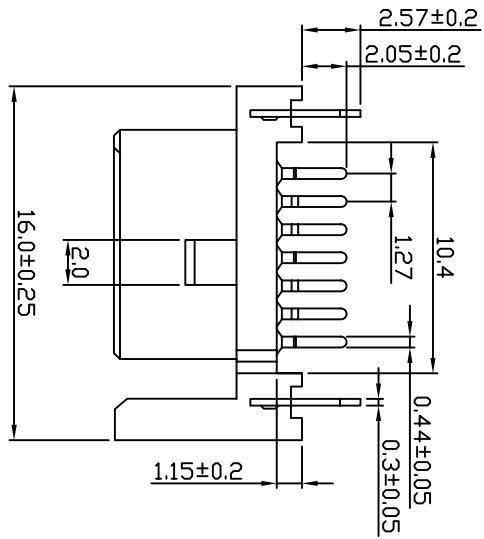
SPECIFICATIONS

1. MATERIAL:

Housig: LCP UL 94V-0
 Color: Black
 Contact: Phosphor bronze
 Peg: Brass

2. FINISH:

Contact: 3u" Gold/Tin plating on contact area
 100u" min. Tin-Lead Plating on
 soldertails
 50u" min. Nickel underplating over
 all
 PEG: 100u" min. Tin-Lead plating on
 soldertails
 50u" min. Nickel underplating over all



Recommend PC Board Layout

KLS Electronic CO., LTD

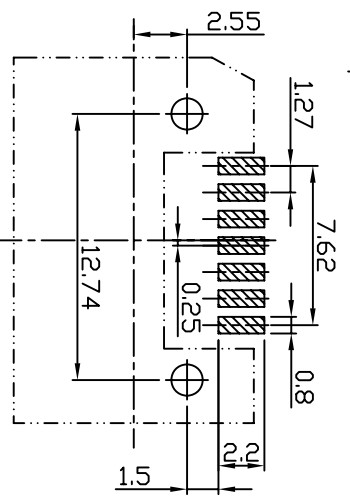
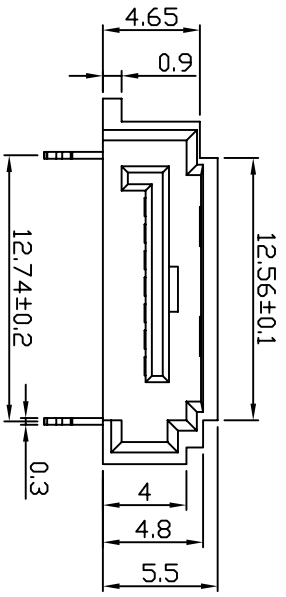
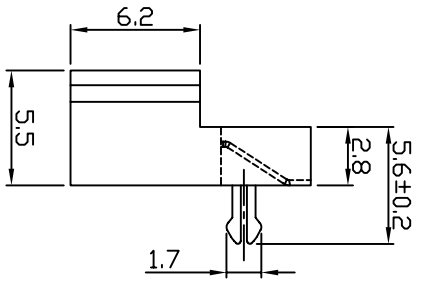
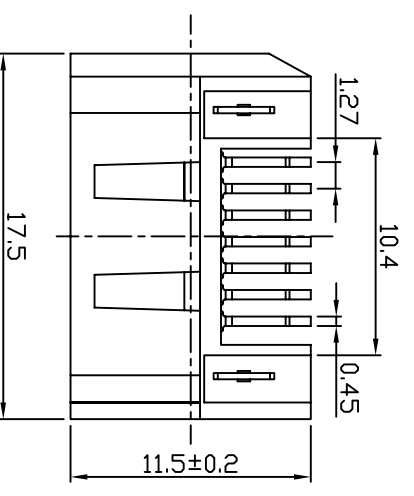
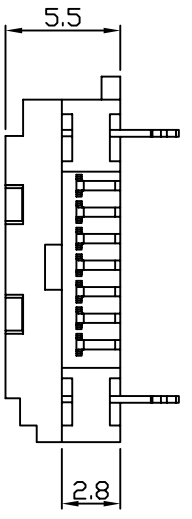
SCALE	UNLESS OTHERWISE SPECIFIED TOLERANCE
	ANG ±.5°
	0 ±.02
	.00 ±.005
DRAWN	Li Bei Lin
CHECKED	17/06/08
APPROVED	

SCALE	UNIT: mm
DRAWN	Li Bei Lin
CHECKED	17/06/08
APPROVED	
SIZE	A4
REV	A

SATA 7P A TYPE 单柱插板式

DRAWN NAME	SATA 7P A TYPE
PRODUCT NO.	
FILE NAME:	

1	2	3	4	5	6	7	8	9
---	---	---	---	---	---	---	---	---



Recommend PC Board Layout
(Top layer, Thickness:1.60mm)

NOTES:

1: MATERIAL:

- 1.1 Housing: Thermoplastic, UL 94-V0, Color: See table.
- 1.2 Contact: Copper alloy, 50u" min. Nickel plating Overall: 100u" min. Tin on solder tail; Gold plating (see table) on contact area.
- 1.3 Hook: Copper alloy, 50u" min. Nickel and 100u" min Tin plating overall.

2: ELECTRICAL:

- 2.1 Low level contact resistance: Initially 25 milliohms max.
- 2.2 Insulation resistance: 1000 megaohms at sea level
- 2.3 Dielectric withstanding voltage: 500V RMS min.

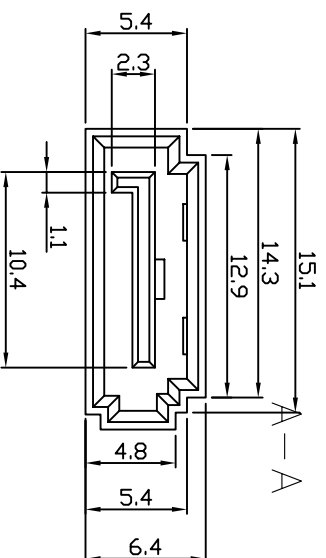
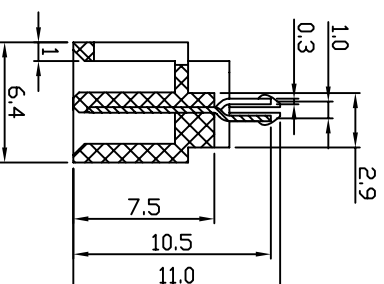
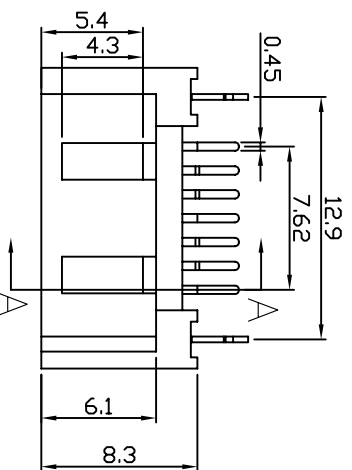
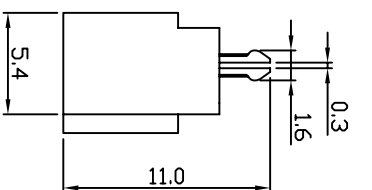
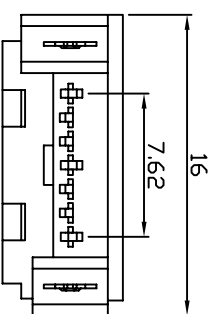
3: According to the environmental requirement, Warranty The controlled hazardous substance should be meet ROHS'S specification

KLS Electronic co., LTD

SCALE	UNLESS OTHERWISE SPECIFIED TOLERANCE	±0.3
	ANG	0.00
		±0.05
DRAWN	UNIT:	mm
LI BEI LIN	DATE:	08/10/07
CHECKED	DRAWN NAME:	Pin header 2.0mm
APPROVED	PRODUCT NO.:	
	FILE NAME:	

SATA 7P 半包开窗 SMT

1	2	3	4	5	6	7	8	9
A	B	C	D	E	F	G	A	B



SPECIFICATIONS

Current Rating: 3Amps
 Insulator Resistance: 5000m Ω Min
 Dielectric Withstanding: AC 500V
 Operating Temperature: -40 $^{\circ}$ to+105 $^{\circ}$
 Contact Material: Copper alloy
 Insulator Material: Polyester, UL 94V-0 LCP
 Finish : Tin, Gold or Duplex plated
 Standard : Gold flash all over
 Max.Processing Temp: 230C $^{\circ}$ for
 30-60seconds(260C $^{\circ}$ for 10 secinds)

KLS Electronic CO., LTD

UNLESS OTHERWISE SPECIFIED TOLERANCE
 ANG 0
 .00
 .00
 .00

SCALE

DRAWN 李北林

UNIT: mm

DRAWN NAME

CHECKED

08/10/07

PRODUCT NO.

APPROVED

SIZE A4

REV A

FILE NAME:

SATA 7P 180 $^{\circ}$ 四面包

A

1

2

3

4

5

6

7

8

9

1

2

3

4

5

6

7

8

9

G

D

E

F

A

B

C

SPECIFICATIONS

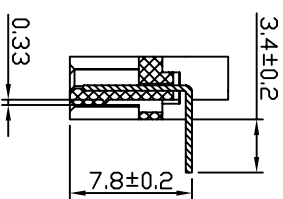
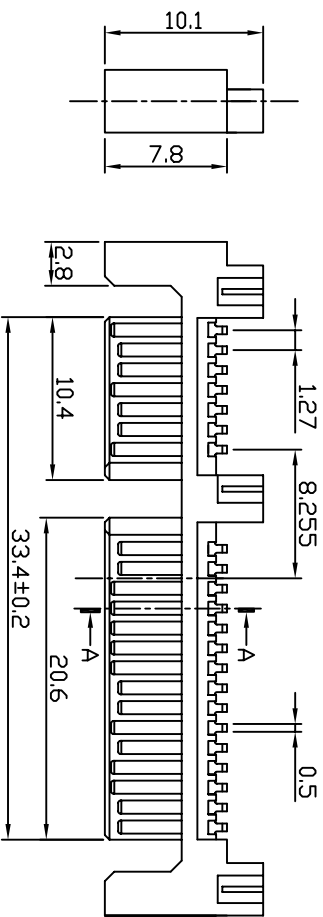
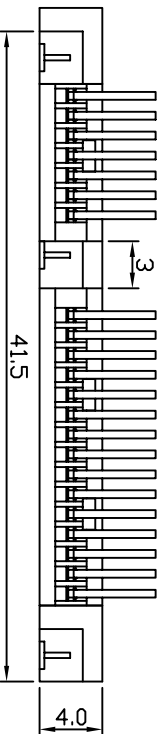
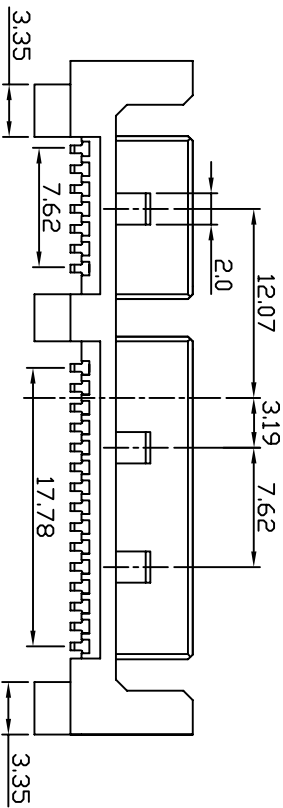
1. MATERIAL:

Housing: LCP UL 94V-0
 Color: Black
 Contact: Phosphor bronze
 Peg: Brass

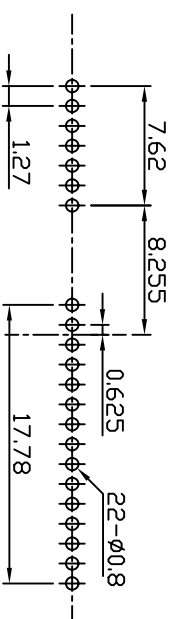
2. FINISH:

Contact: 3u" Gold/Tin plating on contact area

PEG: 100u" min. Tin-Lead Plating on soldertails
 50u" min. Nickel underplating over all
 50u" min. Nickel underplating over all



A-A SECTION



PCB LAYOUT

KLS Electronic CO., LTD

UNLESS OTHERWISE SPECIFIED TOLERANCE
 ANG 0
 DEC 0
 DIM .00

SCALE: UNIT: mm

DRAWN: L1 BEL LIN UNIT: 06/04/09

CHECKED: /

APPROVED: /

SIZE: A4 REV: A

DRAWN NAME:

PRODUCT NO.: SATA 7+15

FILE NAME:

SATA 7+15P 公座 反向90度DIP型

A

1 2 3 4 5 6 7 8 9

SPECIFICATIONS

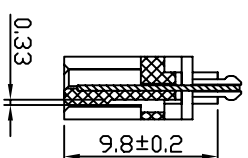
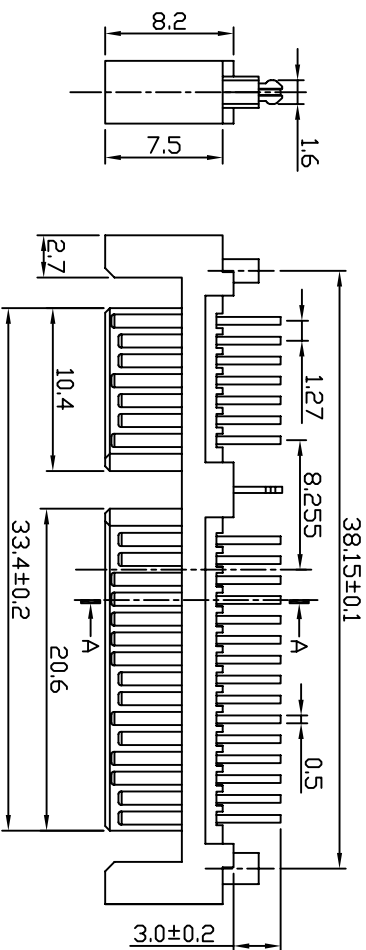
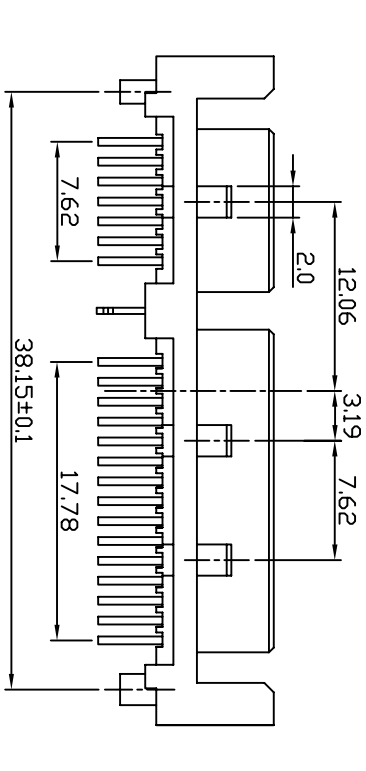
1. MATERIAL:

Housig: LCP UL 94V-0
 Color: Black
 Contact: Phosphor bronze
 Peg: Brass

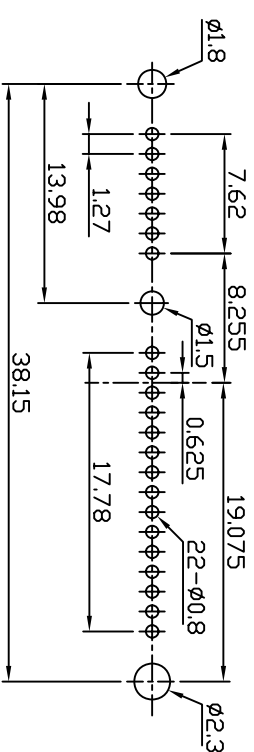
2. FINISH:

Contact: 3u" Gold/Tin plating on contact area

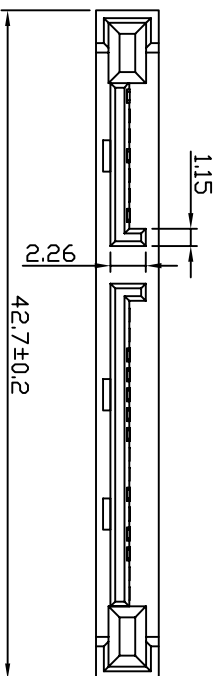
100u" min. Tin-Lead Plating on soldertails
 50u" min. Nickel underplating over all
 100u" min. Tin-Lead plating on soldertails
 50u" min. Nickel underplating over all



A-A SECTION



PCB LAYOUT



KLS Electronic Co., LTD

UNLESS OTHERWISE SPECIFIED TOLERANCE
 ANG 0
 DEC 0.00
 DIM ±0.3
 HOLE ±0.2
 TAP ±0.05

SCALE

DRAWN

CHECKED

APPROVED

DRAWN NAME

CHECKED

APPROVED

PRODUCT NO.

FILE NAME:

UNIT: mm

DATE: 07/21/07

DATE: / /

DATE: / /

SATA 7+15

SATA 7+15P 公座180度带柱带鱼叉DIP型

A

1

2

3

4

5

6

7

8

9

A

SPECIFICATIONS

1. MATERIAL:

Housing: LCP UL 94V-0
 Color: Black
 Contact: Phosphor bronze
 Peg: Brass

2. FINISH:

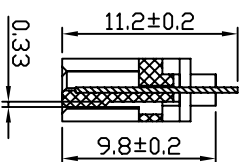
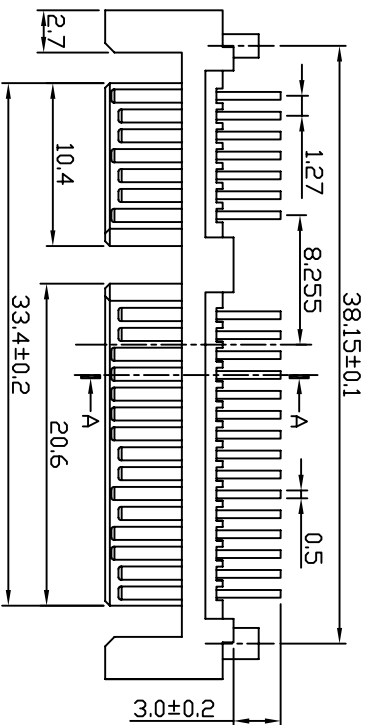
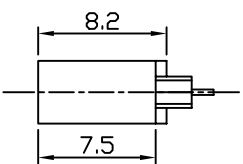
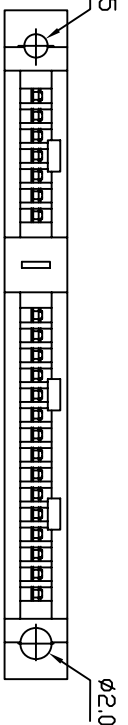
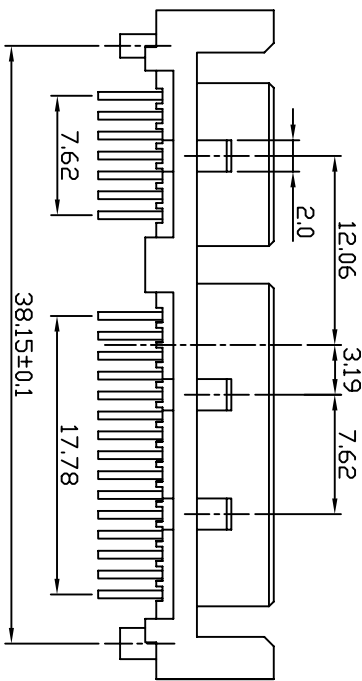
Contact: 3u" Gold/Tin plating on contact area

100u" min. Tin-Lead Plating on soldertails

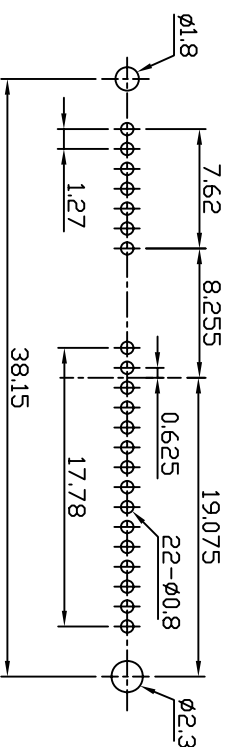
50u" min. Nickel underplating over all

PEG: 100u" min. Tin-Lead plating on soldertails

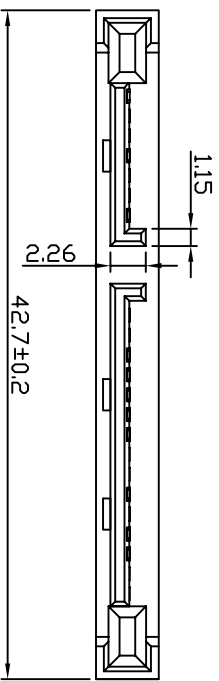
50u" min. Nickel underplating over all



A-A SECTION



PCB LAYOUT



KLS Electronic co., LTD

UNLESS OTHERWISE SPECIFIED TOLERANCE	
ANG	±5°
0	±0.3
.00	±0.2
	±0.05
SCALE	UNIT: mm
DRAWN	DATE: 07/21/07
CHECKED	
APPROVED	

DRAWN NAME

SATA 7+15

SATA 7+15P 公座180度DIP型 带柱

PRODUCT NO.	
PILE NAME:	
SIZE	A4
REV	A

SPECIFICATIONS

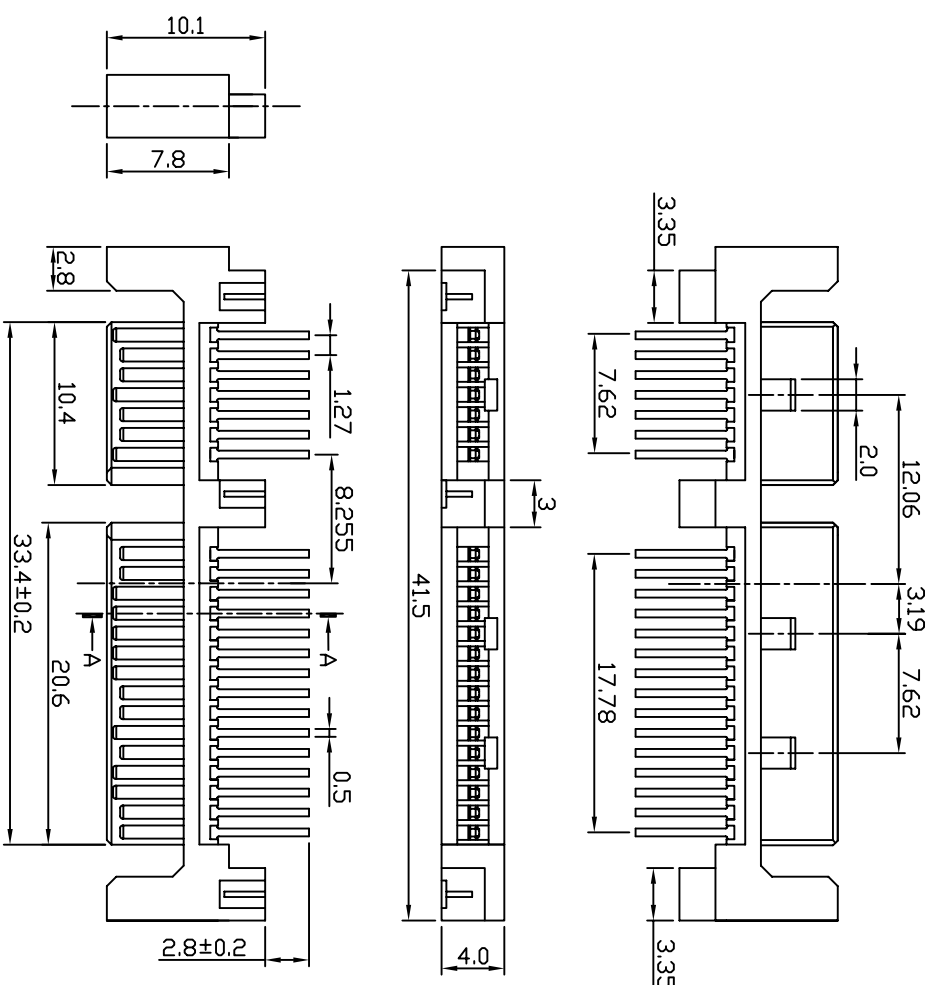
1. MATERIAL:

Housig: LCP UL 94V-0
 Color: Black
 Contact: Phosphor bronze
 Peg: Brass

2. FINISH:

Contact: 3u" Gold/Tin plating on contact area

PEG: 100u" min. Tin-Lead Plating on soldertails
 50u" min. Nickel underplating over all
 50u" min. Nickel underplating over all



PCB LAYOUT

KIS Electronic CO., LTD

UNLESS OTHERWISE SPECIFIED TOLERANCE
 ANG 0
 .00
 ±0.3
 ±0.2
 ±0.05

SCALE UNIT: mm

DRAWN L1 BEL LIN 07/21/07

CHECKED

APPROVED

DRAWN NAME

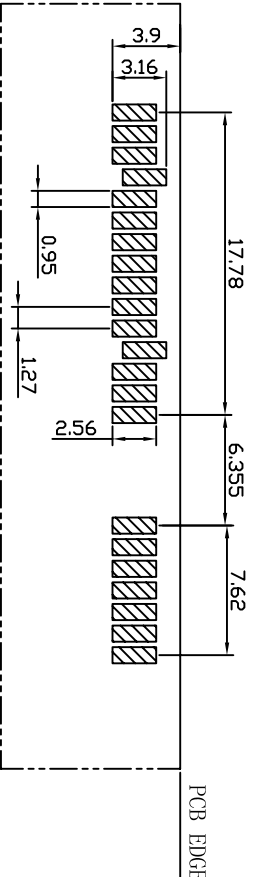
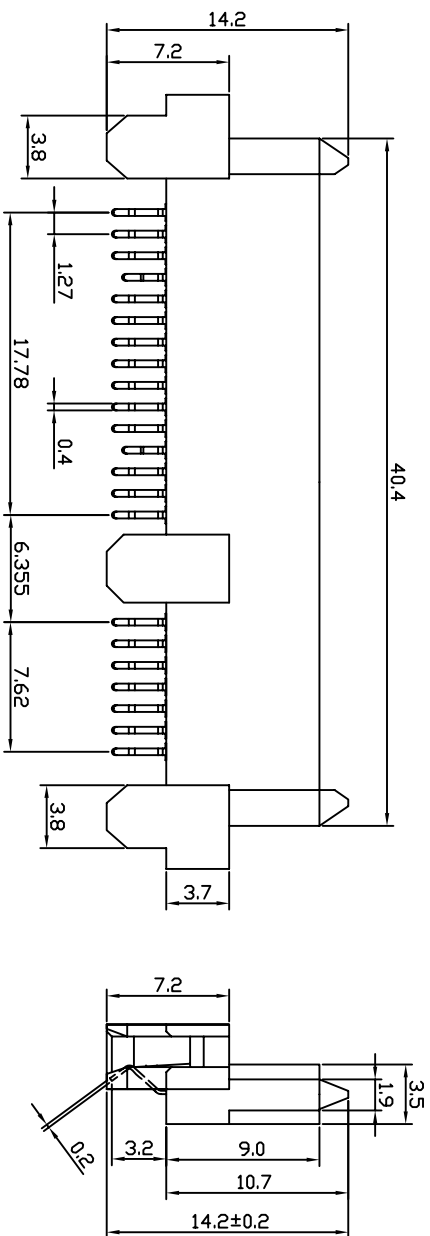
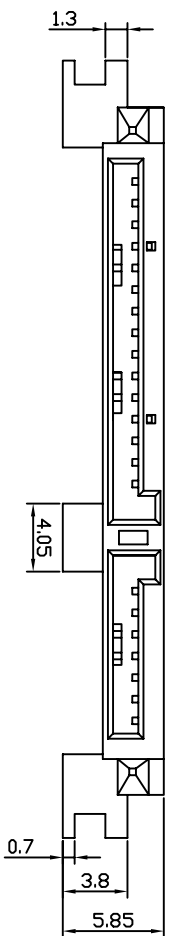
PRODUCT NO.

FILE NAME:

SATA 7+15

SATA 7+15P 公座180度DIP型

1	2	3	4	5	6	7	8	9
A	SATA 7+15P 公座180度DIP型							
							SIZE A4	REV A
							PRODUCT NO.	SATA 7+15
							FILE NAME:	



RECOMMEND PCB LAYOUT (T=1.2)
PCB TOLERANCE: ±0.05

SPECIFICATIONS

1.MATERIAL:

- Housig: LCP UL 94V-0
- Color: Black
- Contact: Phosphor bronze
- Peg: Brass

2.FINISH:

- Contact: 3u" Gold/Tin plating on contact area
- 100u" min.Tin-Lead Plating on soldertails
- 50u" min.Nickel underplating over all
- PEG: 100u"min.Tin-Lead plating on soldertails
- 50u"min.Nickel underplating over all

UNLESS OTHERWISE SPECIFIED TOLERANCE	±.51
ANG	±0.3
0	±0.2
.00	±0.05

KLS Electronic CO.,LTD

SCALE	UNIT:	mm
DRAWN	Li Bei Lin	09/02/09
CHECKED		
APPROVED		
DRAWN NAME	SATA 7+15	
PRODUCT NO.		
FILE NAME:		

SATA 7+15P 夹板母头

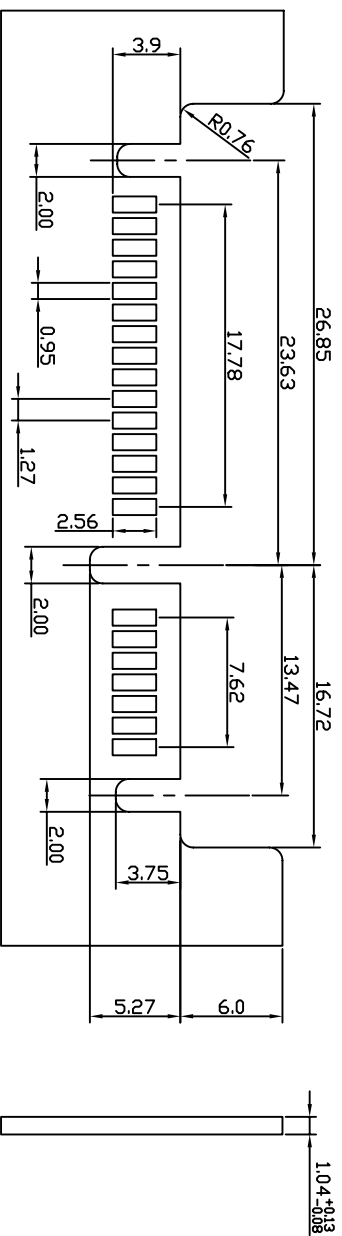
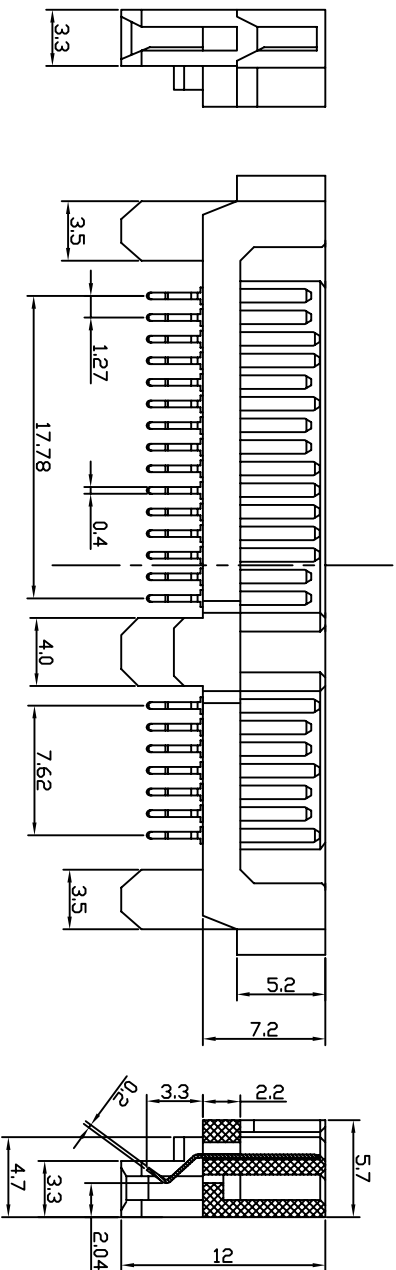
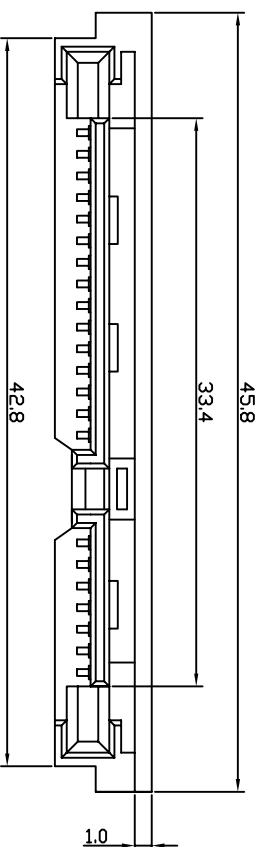


A	1	2	3	4	5	6	7	8	9
---	---	---	---	---	---	---	---	---	---

SPECIFICATIONS

1. MATERIAL:

Housig: LCP UL 94V-0
 Color: Black
 Contact: Phosphor bronze
 Peg: Brass
2. FINISH:
 Contact: 3u" Gold/Tin plating on contact area
 100u" min. Tin-Lead Plating
 on soldertails
 50u" min. Nickel underplating
 over all
 PEG: 100u" min. Tin-Lead plating on soldertails
 50u" min. Nickel underplating
 over all



UNLESS OTHERWISE SPECIFIED TOLERANCE

ANG	0	±0.3
	0.00	±0.2
	0.00	±0.05

KLS Electronic CO., LTD

SCALE: UNIT: mm

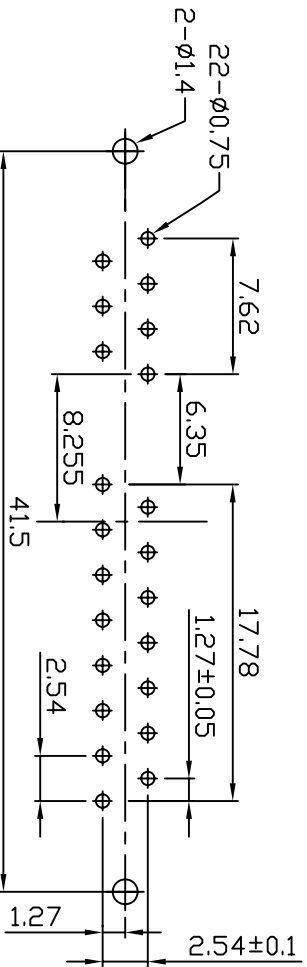
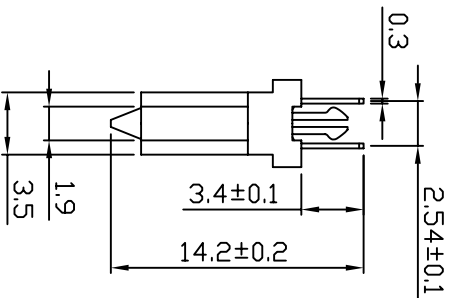
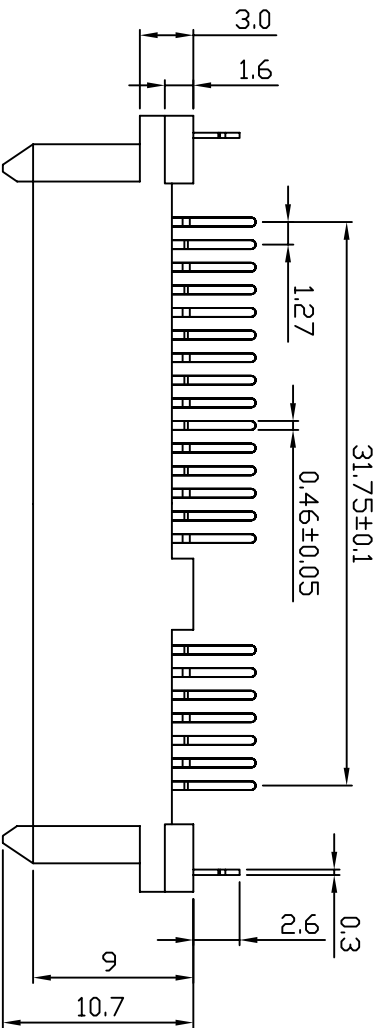
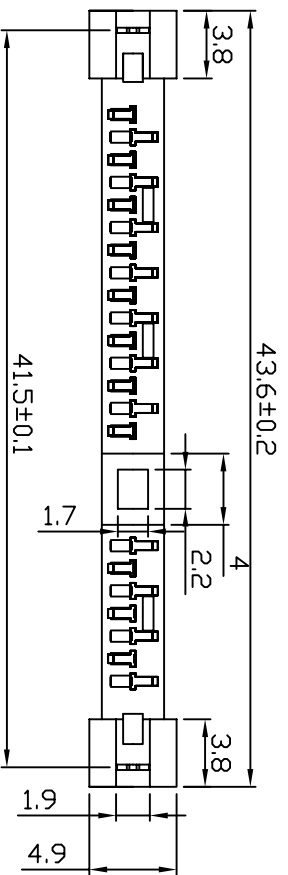
DRAWN: Li Bei Lin 09/07/07

CHECKED: APPROVED: SIZE: A4 REV: A

PRODUCT NO.: SATA 7+15
 DRAWING NAME: KLS Electronic CO., LTD
 FILE NAME:

SATA 7+15P 夹角公座

1	2	3	4	5	6	7	8	9
A	B	C	D	E	F	G	A	B



SPECIFICATIONS

1.MATERIAL:

Housig: LCP UL 94V-0

Color: Black

Contact: Phosphor bronze

Peg: Brass

2.FINISH:

Contact: 3u" Gold/Tin plating on contact area

100u" min.Tin-Lead Plating

on soldertails

50u" min.Nickel underplating

over all

PEG: 100u" min.Tin-Lead plating on soldertails

50u" min.Nickel underplating

over all

PCB LAYOUT

SATA 7+15 夹板胶芯 带鱼叉 双排长端

KLS Electronic CO.,LTD

SCALE	UNLESS OTHERWISE SPECIFIED TOLERANCE	±0.3
	ANG	±0.2
		±0.05
DRAWN	UNIT:	mm
LI BEI LIN		
CHECKED		
APPROVED		

DATE: 07/21/07

SCALE: A4

REV: A

PRODUCT NO: SATA 7+15

FILE NAME:



SPECIFICATIONS

1.MATERIAL:

Housig: LCP UL 94V-0

Color: Black

Contact: Phosphor bronze

Peg: Brass

2.FINISH:

Contact: 3u" Gold/Tin plating on contact area

100u" min.Tin-Lead Plating

on soldertails

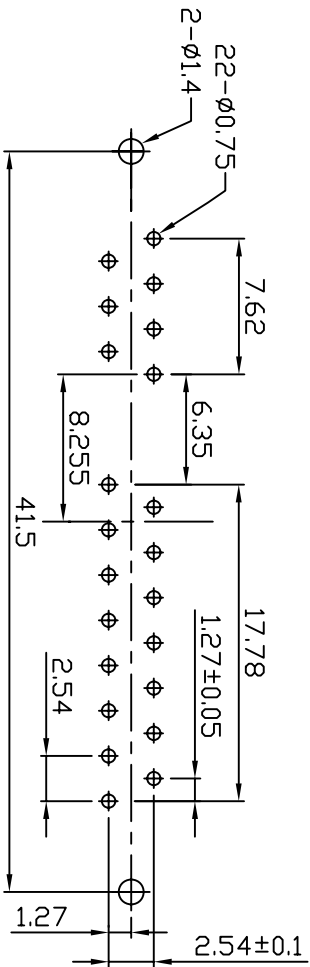
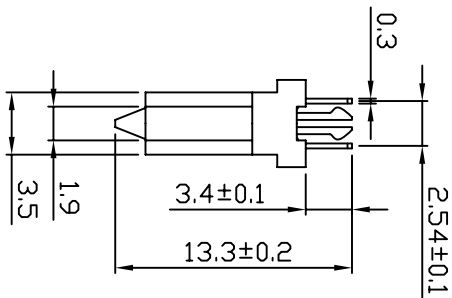
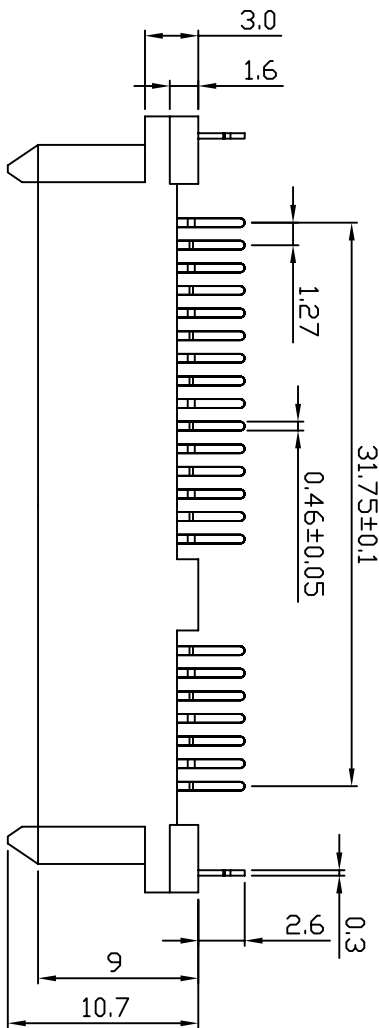
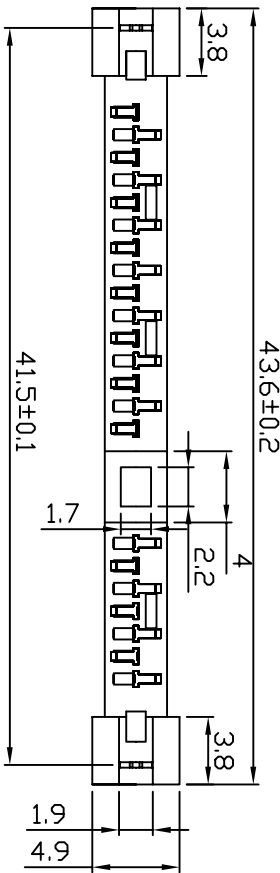
50u" min.Nickel underplating

over all

PEG: 100u" min.Tin-Lead plating on soldertails

50u" min.Nickel underplating

over all



PCB LAYOUT

SATA 7+15 夹板胶芯 带鱼叉 双排短端

UNLESS OTHERWISE SPECIFIED TOLERANCE

ANG 0 ±0.3
0.00 ±0.2
0.00 ±0.05

K/S Electronic CO.,LTD

SCALE: UNIT: mm

DRAWN: L1 BBI L1N

DATE: 07/21/07

DRAWN NAME: SATA 7+15

CHECKED

DATE: / /

PRODUCT NO.:

APPROVED

DATE: / /

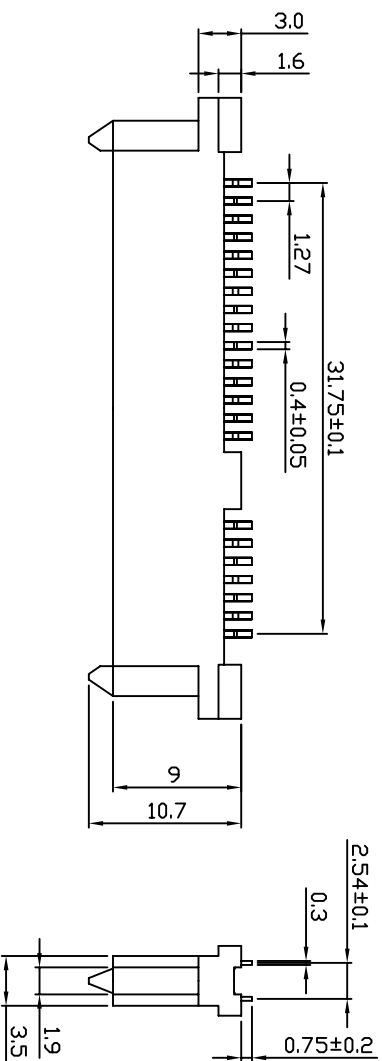
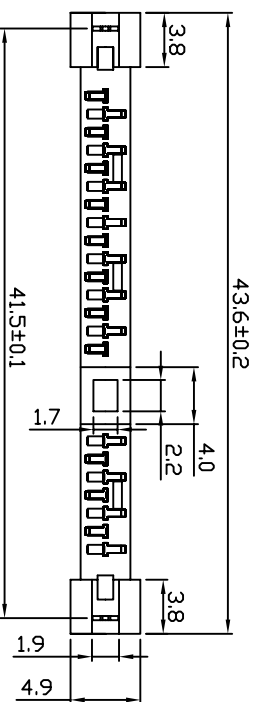
FILE NAME:



SIZE: A4

REV: A

	1	2	3	4	5	6	7	8	9
A	PCB LAYOUT								
B	SATA 7+15 夹板胶芯 带鱼叉 双排短端								
C	UNLESS OTHERWISE SPECIFIED TOLERANCE								
D	ANG 0 ±0.3								
E	0.00 ±0.2								
F	0.00 ±0.05								
G	SCALE: UNIT: mm								
	DRAWN: L1 BBI L1N								
	DATE: 07/21/07								
	DRAWN NAME: SATA 7+15								
	CHECKED								
	DATE: / /								
	PRODUCT NO.:								
	APPROVED								
	DATE: / /								
	FILE NAME:								
	SIZE: A4								
	REV: A								



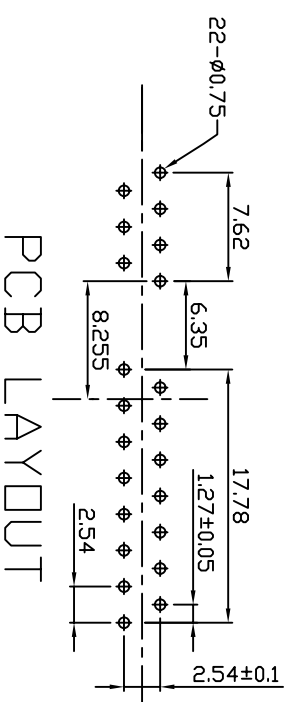
SPECIFICATIONS

1. MATERIAL:

Housing: LCP UL 94V-0
 Color: Black
 Contact: Phosphor bronze
 Peg: Brass

2. FINISH:

Contact: 3u" Gold/Tin plating on contact area
 100u" min. Tin-Lead Plating on soldertails
 50u" min. Nickel underplating over all
 PEG: 100u" min. Tin-Lead plating on soldertails
 50u" min. Nickel underplating over all



UNLESS OTHERWISE SPECIFIED TOLERANCE
 ANG 0
 DEC 0.00
 DIM ±0.3
 FRA ±0.2
 MIL ±0.05

KLS Electronic CO., LTD

SCALE: UNIT: mm

DRAWN: LI BEI LIN

DATE: 07/21/07

DRAWN NAME:

CHECKED:

APPROVED:

SIZE: A4

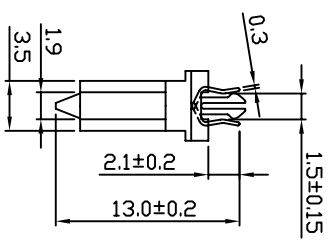
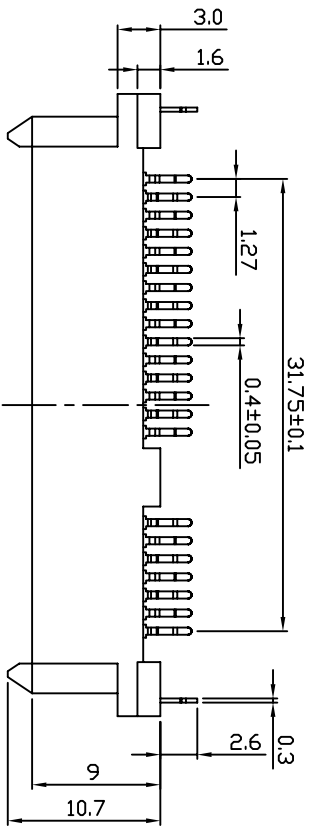
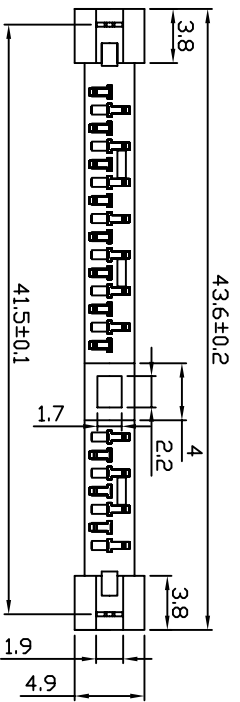
REV: A

PRODUCT NO.: SATA 7+15

FILE NAME:

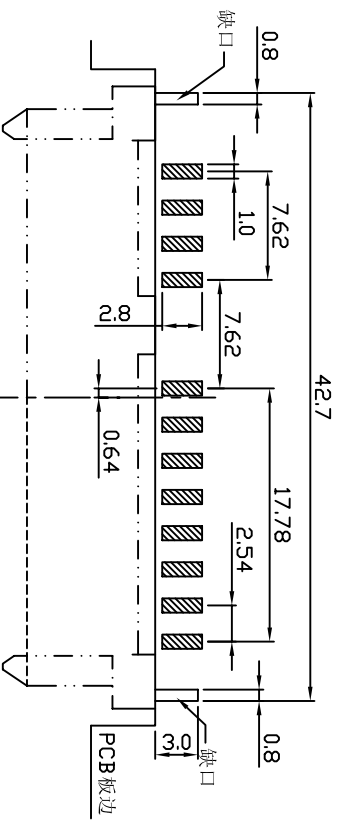
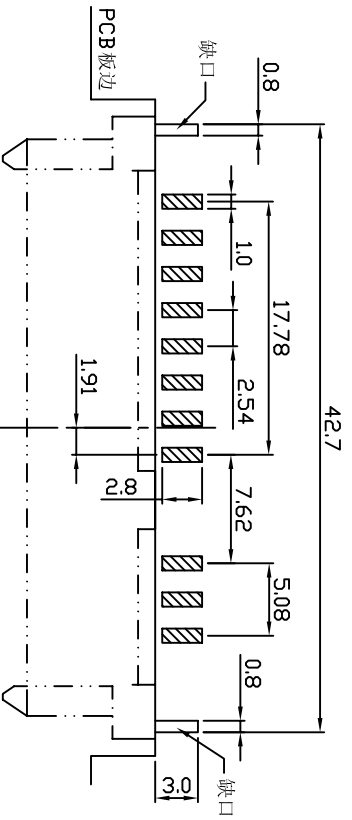
SATA 7+15 夹板胶芯 PC0.75mm

1	2	3	4	5	6	7	8	9
---	---	---	---	---	---	---	---	---



SPECIFICATIONS

- 1. MATERIAL:**
 Housing: LCP UL 94V-0
 Color: Black
 Contact: Phosphor bronze
 Peg: Brass
- 2. FINISH:**
 Contact: 3u" Gold/Tin plating on contact area
 100u" min. Tin-Lead Plating on soldertails
 50u" min. Nickel underplating over all
 PEG: 100u" min. Tin-Lead plating on soldertails
 50u" min. Nickel underplating over all



PCB LAYOUT

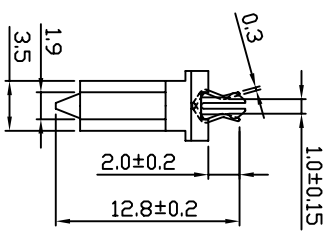
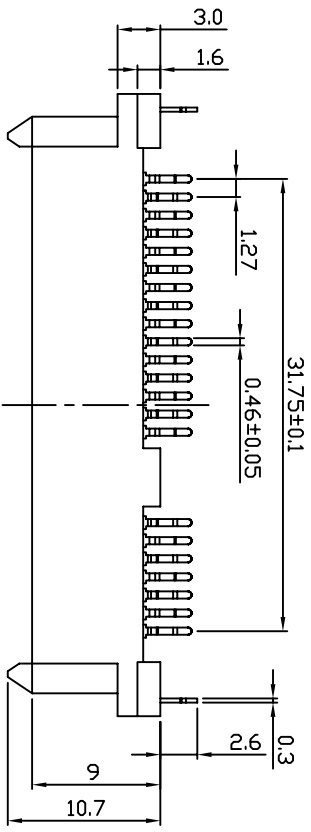
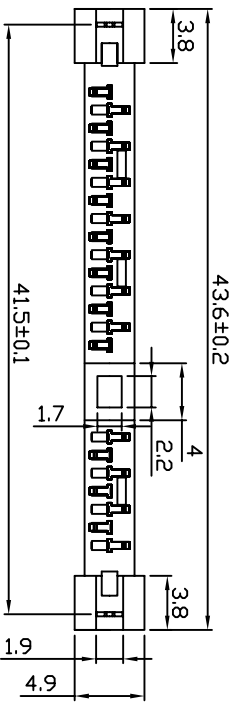
KLS Electronic CO., LTD

UNLESS OTHERWISE SPECIFIED TOLERANCE	
ANG	±0.3
0	±0.2
0.00	±0.05
SCALE	UNIT: mm
DRAWN	07/21/07
CHECKED	
APPROVED	

DRAWN NAME	LI BEI LIN
PRODUCT NO.	SATA 7+15
FILE NAME:	

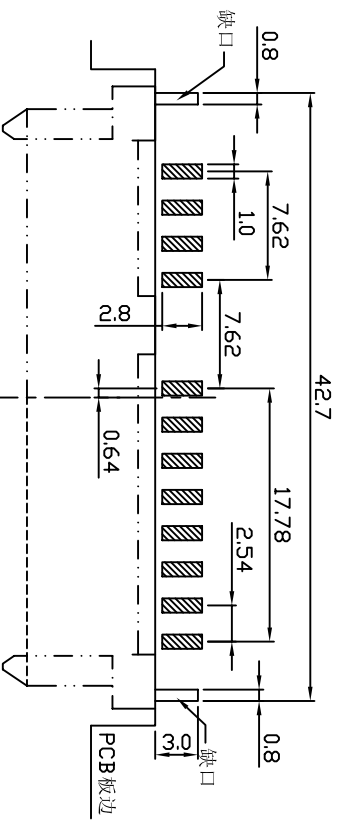
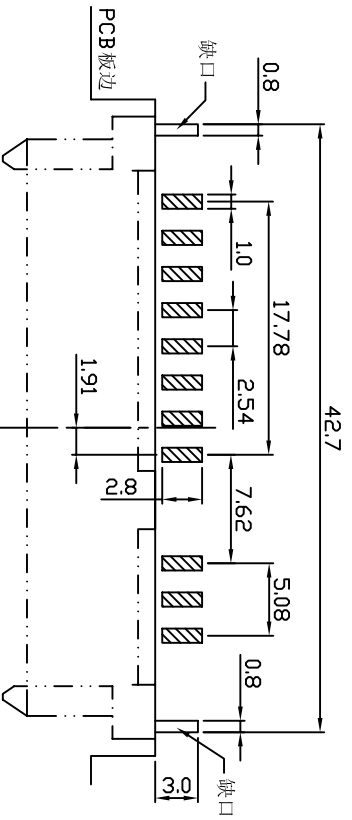
SATA 7+15 夹板1.6 带鱼叉

1	2	3	4	5	6	7	8	9
A	B	C	D	E	F	G	A	B



SPECIFICATIONS

1. MATERIAL:
 - Housing: LCP UL 94V-0
 - Color: Black
 - Contact: Phosphor bronze
 - Peg: Brass
2. FINISH:
 - Contact: 3u" Gold/Tin plating on contact area
 - 100u" min. Tin-Lead Plating on soldertails
 - 50u" min. Nickel underplating over all
 - PEG: 100u" min. Tin-Lead plating on soldertails
 - 50u" min. Nickel underplating over all



PCB LAYOUT

UNLESS OTHERWISE SPECIFIED TOLERANCE
 ANG 0
 DEC 0.00
 DIM ±0.3
 HOLE ±0.2
 POSITION ±0.05

KLS Electronic CO., LTD

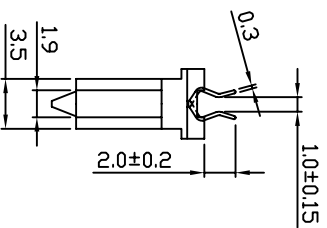
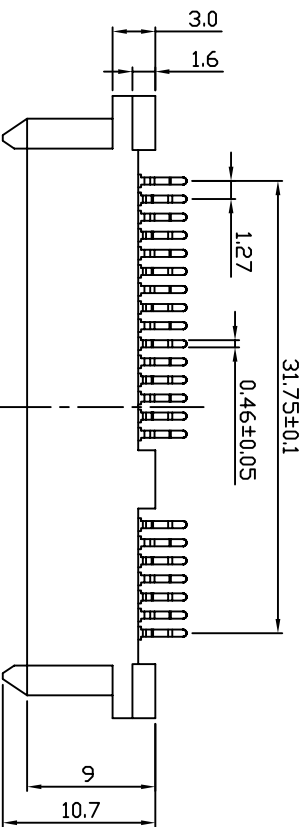
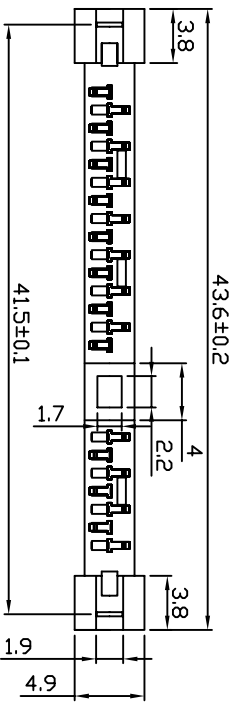
SCALE: UNIT: mm

DRAWN: LI BEI LIN UNIT: 07/21/07 DRAWN NAME: SATA 7+15

CHECKED: APPROVED: PRODUCT NO. FILE NAME:

SATA 7+15 夹板1.0 带鱼叉

1	2	3	4	5	6	7	8	9
---	---	---	---	---	---	---	---	---



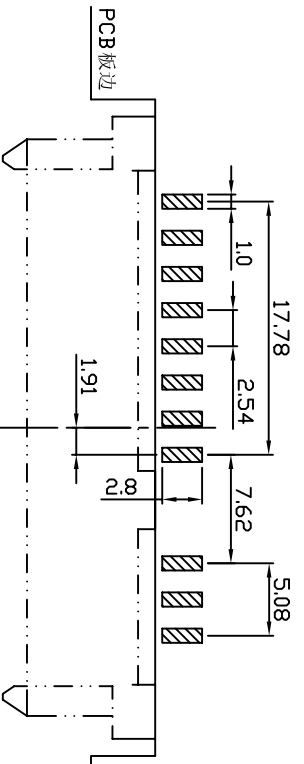
SPECIFICATIONS

1. MATERIAL:

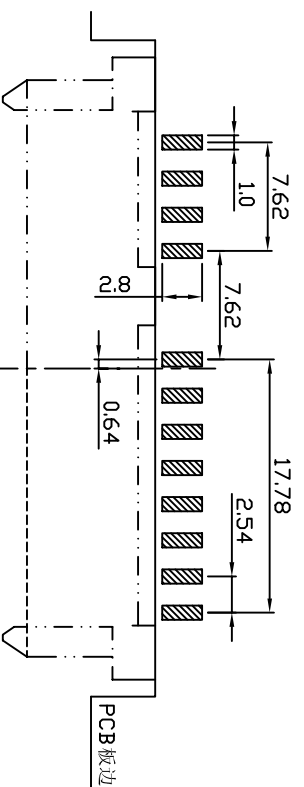
Housing: LCP UL 94V-0
 Color: Black
 Contact: Phosphor bronze
 Peg: Brass

2. FINISH:

Contact: 3u" Gold/Tin plating on contact area
 100u" min. Tin-Lead Plating on soldertails
 50u" min. Nickel underplating over all
 PEG: 100u" min. Tin-Lead plating on soldertails
 50u" min. Nickel underplating over all



(A面)



(B面)

PCB LAYOUT

UNLESS OTHERWISE SPECIFIED TOLERANCE
 ANG 0
 DEC 0
 DIM .00

KLS Electronic CO., LTD

SCALE

1:1

UNIT: mm

DRAWN: LI BEI LIN

DATE: 07/21/07

DRAWN NAME:

SATA 7+15

CHECKED

APPROVED

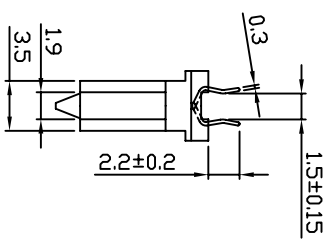
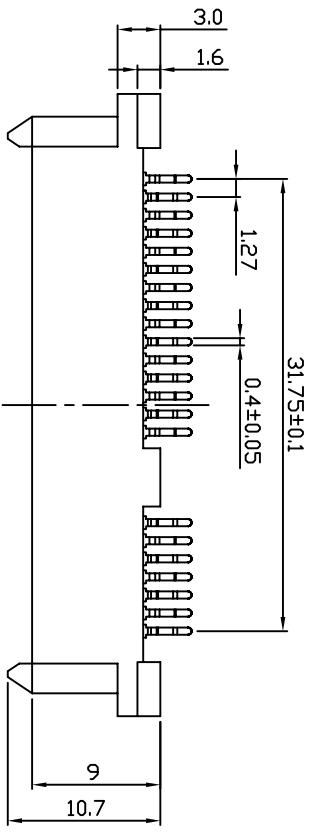
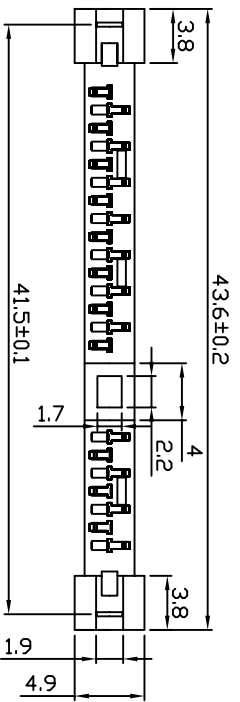
PRODUCT NO.:

SIZE: A4

REV: A

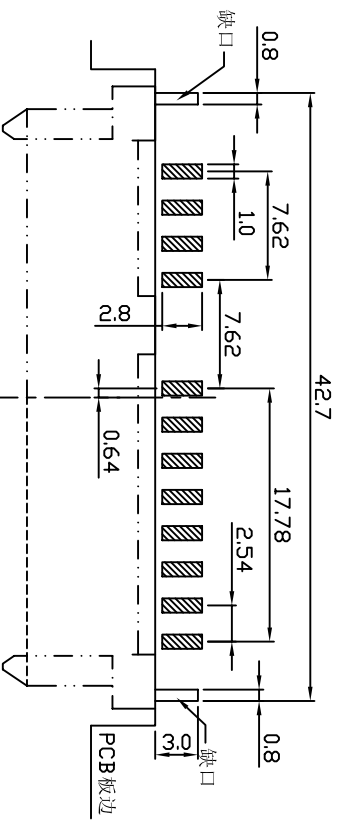
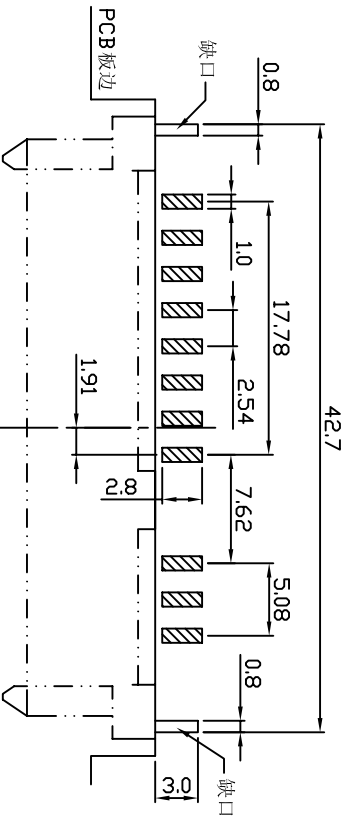
FILE NAME:

SATA 7+15 夹板1.0 不带鱼叉



SPECIFICATIONS

- 1. MATERIAL:**
 Housing: LCP UL 94V-0
 Color: Black
 Contact: Phosphor bronze
 Peg: Brass
- 2. FINISH:**
 Contact: 3u" Gold/Tin plating on contact area
 100u" min. Tin-Lead Plating on soldertails
 50u" min. Nickel underplating over all
 PEG: 100u" min. Tin-Lead plating on soldertails
 50u" min. Nickel underplating over all



PCB LAYOUT

KLS Electronic CO., LTD

UNLESS OTHERWISE SPECIFIED TOLERANCE
 ANG 0
 .00

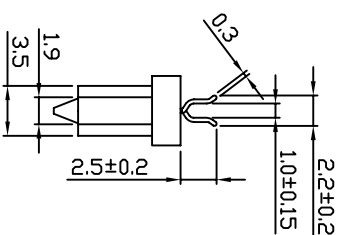
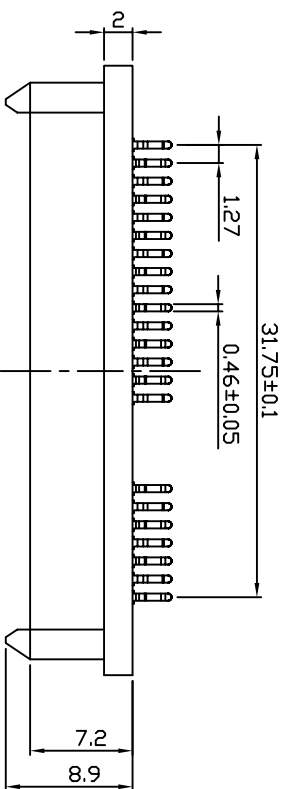
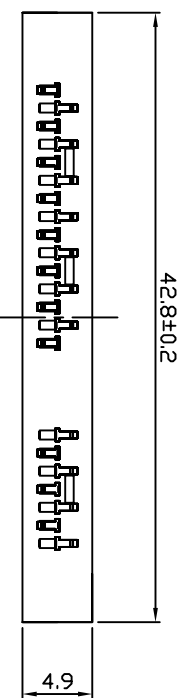
SCALE: UNIT: mm

DRAWN: LI BEI LIN
 CHECKED: /
 APPROVED: /

DRAWN NAME: /
 PRODUCT NO.: /
 FILE NAME: /

SATA 7+15 夹板1.6 不带鱼叉

1	2	3	4	5	6	7	8	9	
A								B	



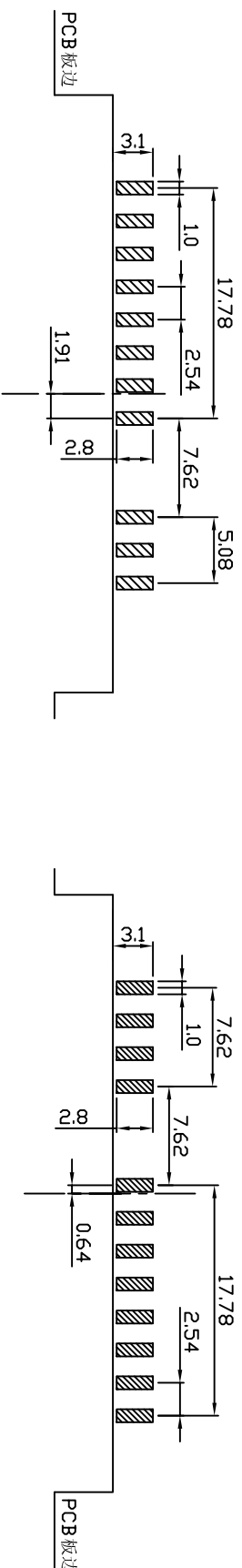
SPECIFICATIONS

1. MATERIAL:

Housing: LCP UL 94V-0
 Color: Black
 Contact: Phosphor bronze
 Peg: Brass

2. FINISH:

Contact: 3u" Gold/Tin plating on contact area
 100u" min. Tin-Lead Plating on soldertails
 50u" min. Nickel underplating over all
 PEG: 100u" min. Tin-Lead plating on soldertails
 50u" min. Nickel underplating over all



(A面)

(B面)

PCB LAYOUT

UNLESS OTHERWISE SPECIFIED TOLERANCE
 ANG 0 0.00
 ±0.3
 ±0.2
 ±0.05
KLS Electronic co., LTD

SCALE UNIT: mm

DRAWN: LI BEI LIN 18/09/08

CHECKED: / / DRAWN NAME: SATA 7+15

APPROVED: / / PRODUCT NO. /

SIZE: A4 REV: A FILE NAME: /

SATA 7+15 夹板1.2 H7.2

1	2	3	4	5	6	7	8	9	
A								B	
C								C	
D								D	
E								E	
F								F	
G								G	

SPECIFICATIONS

1. MATERIAL:

Housing: LCP UL 94V-0
 Color: Black
 Contact: Phosphor bronze
 Peg: Brass

2. FINISH:

Contact: 3u" Gold/Tin plating on contact area

100u" min. Tin-Lead Plating

on soldertails

50u" min. Nickel underplating

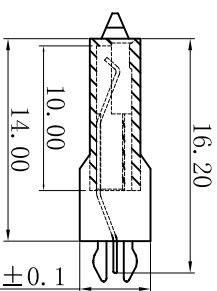
over all

PEG: 100u"min. Tin-Lead plating on

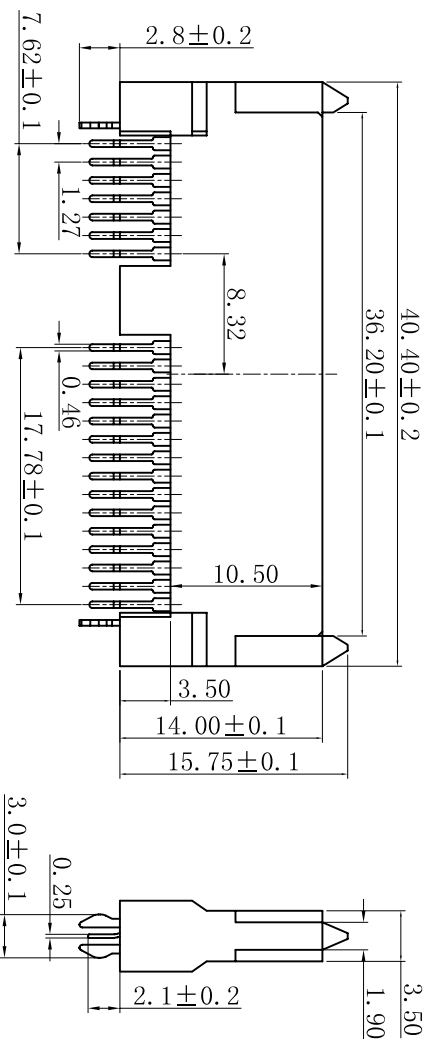
soldertails

50u"min. Nickel underplating

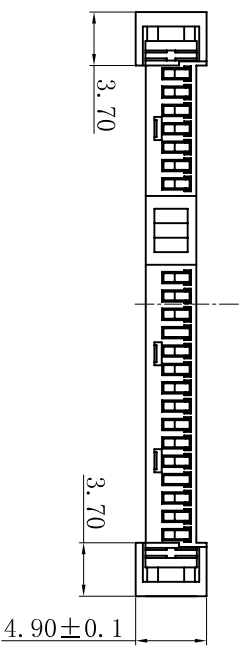
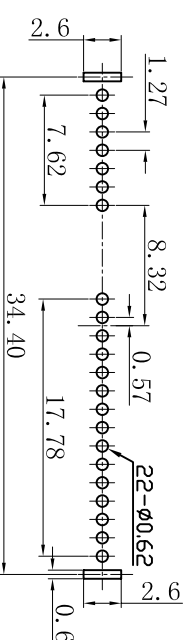
over all



A-A SECTION



PCB LAYOUT



KLS Electronic co., LTD

SCALE	UNLESS OTHERWISE SPECIFIED TOLERANCE	OTHERWISE
	ANG	±5°
	0	±0.3
	0.00	±0.2
	0.000	±0.05
DRAWN	LI BEI LIN	DATE
CHECKED		07/03/09
APPROVED		
PRODUCT NO.		
FILE NAME:		

SATA 7+15 DIP W3.5 增高型 带鱼叉 PC2.1

SPECIFICATIONS

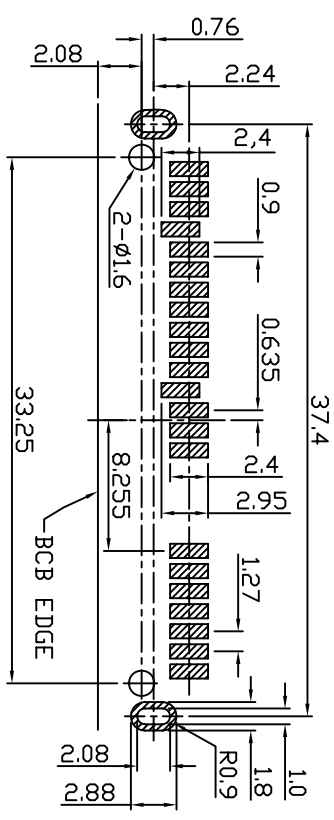
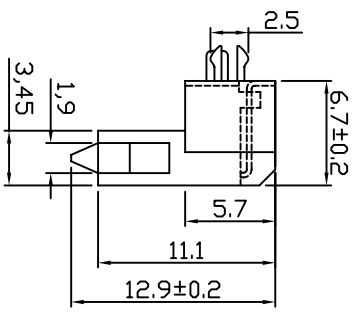
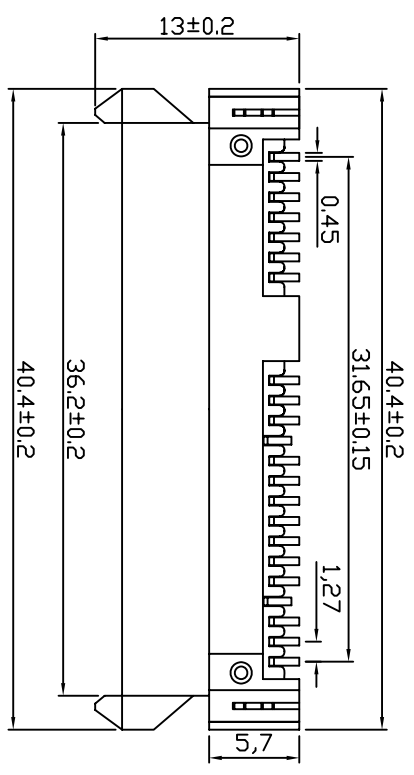
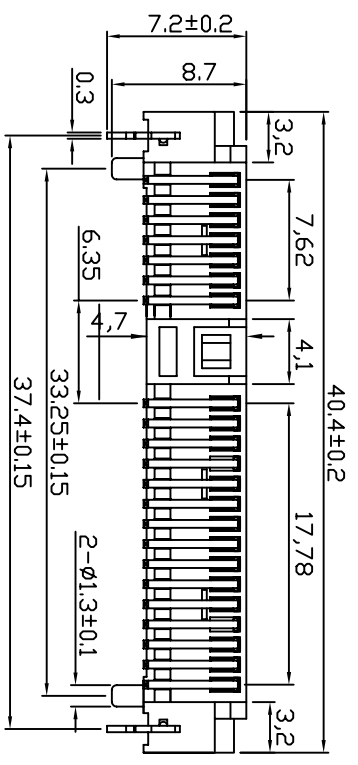
1. MATERIAL:

Housig: LCP UL 94V-0
 Color: Black
 Contact: Phosphor bronze
 Peg: Brass

2. FINISH:

Contact: 3u" Gold/Tin plating on contact area
 100u" min. Tin-Lead Plating on soldertails

50u" min. Nickel underplating over all
 PEG: 100u" min. Tin-Lead plating on soldertails
 50u" min. Nickel underplating over all



RECOMMEND PCB LAYOUT (T=1.2)
 PCB TOLERANCE: ±0.05

KLS Electronic Co., LTD

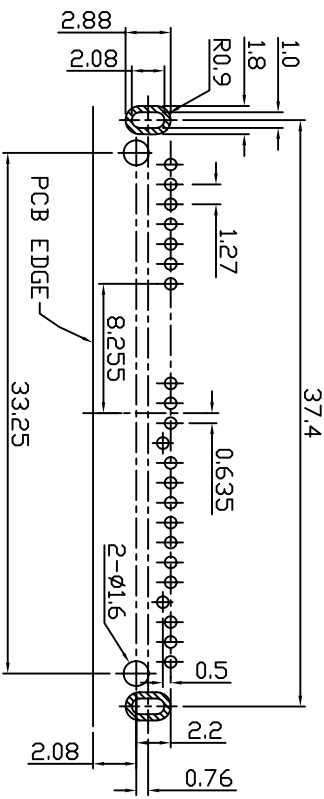
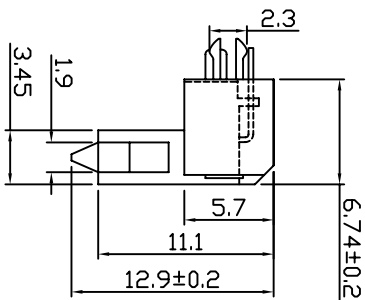
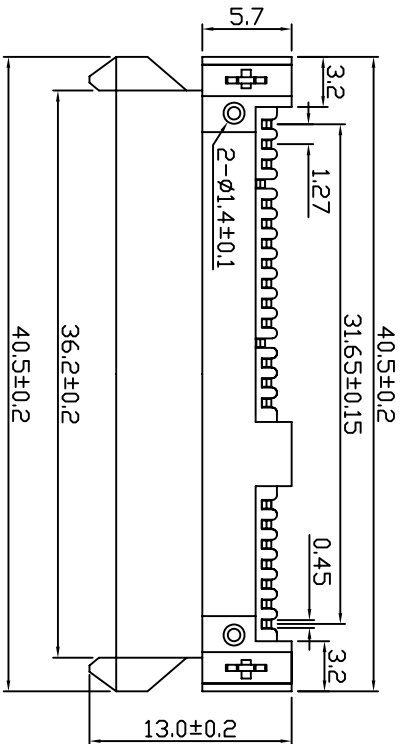
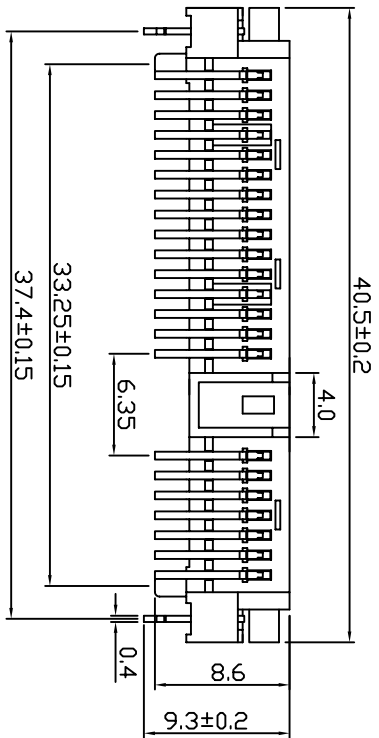
UNLESS OTHERWISE SPECIFIED TOLERANCE
 ANG 0 ±0.3
 0.0 ±0.2
 0.00 ±0.05

SCALE UNIT: mm
 DRAWN LI BEI LIN 07/21/07
 CHECKED
 APPROVED

PRODUCT NO.
 FILE NAME:

SATA 7+15P H6.74 SMT 板上 带鱼叉

1	2	3	4	5	6	7	8	9
A	B	C	D	E	F	G	A	B



RECOMMEND PCB LAYOUT (T=1.2)
PCB TOLERANCE: ±0.05

SPECIFICATIONS

1. MATERIAL:

Housing: LCP UL 94V-0
Color: Black
Contact: Phosphor bronze
Peg: Brass

2. FINISH:

Contact: 3u" Gold/Tin plating on contact area
100u" min. Tin-Lead Plating on
50u" min. Nickel underplating over
all
50u" min. Tin-Lead plating on
all
50u" min. Nickel underplating over
all

KLS Electronic CO., LTD

UNLESS OTHERWISE SPECIFIED TOLERANCE		UNIT:	
ANG	±5'	mm	
0	±0.3		
0.00	±0.2		
0.000	±0.05		

SCALE: DRAWN: LI BEL LIN 24/03/09

CHECKED: DRAWN NAME:

APPROVED: / / PRODUCT NO.:

SIZE: A4 REV: A FILE NAME:

SATA 7+15 90° H6.74 板下

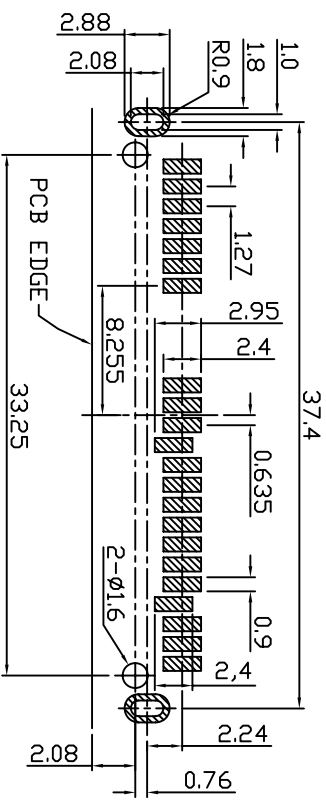
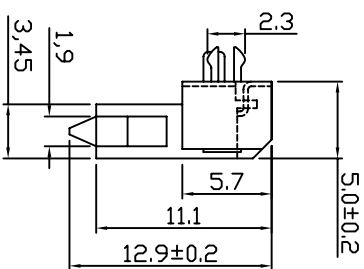
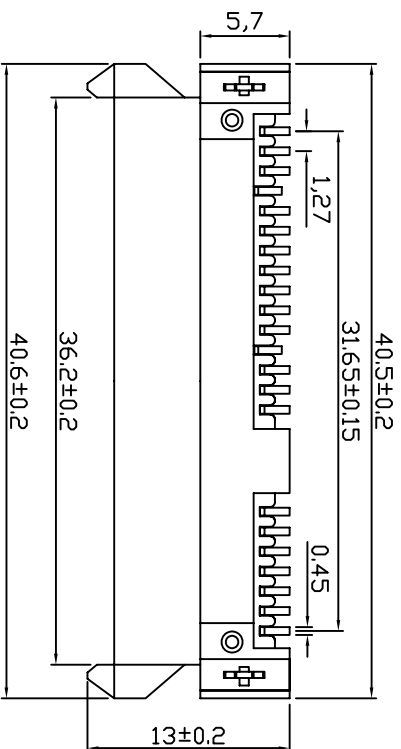
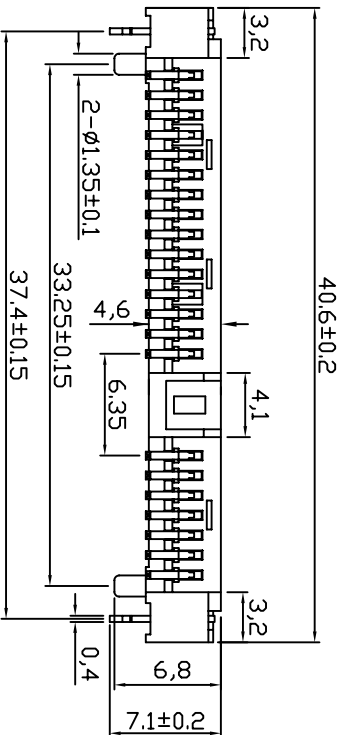
SPECIFICATIONS

1.MATERIAL:

Housig: LCP UL 94V-0
 Color: Black
 Contact: Phosphor bronze
 Peg: Brass

2.FINISH:

Contact: 3u" Gold/Tin plating on contact area
 100u" min. Tin-Lead Plating on
 soldertails
 50u" min.Nickel underplating over
 all
 PEG: 100u" min. Tin-Lead plating on
 soldertails
 50u" min.Nickel underplating over
 all



RECOMMEND PCB LAYOUT (T=1.2)
 PCB TOLERANCE: ±0.05

KLS Electronic CO.,LTD

SCALE	UNLESS OTHERWISE SPECIFIED TOLERANCE	UNIT:	mm
DRAWN	LI BEI LIN	DATE	07/21/07
CHECKED			
APPROVED			
SIZE	A4	REV	A

SATA 7+15 SMT H5.0 下接触

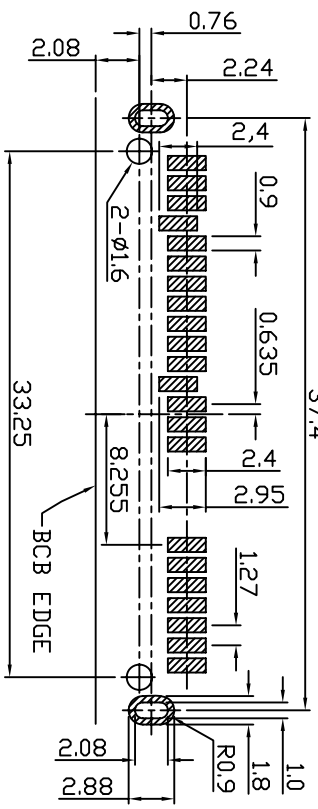
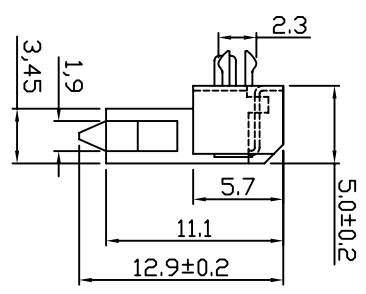
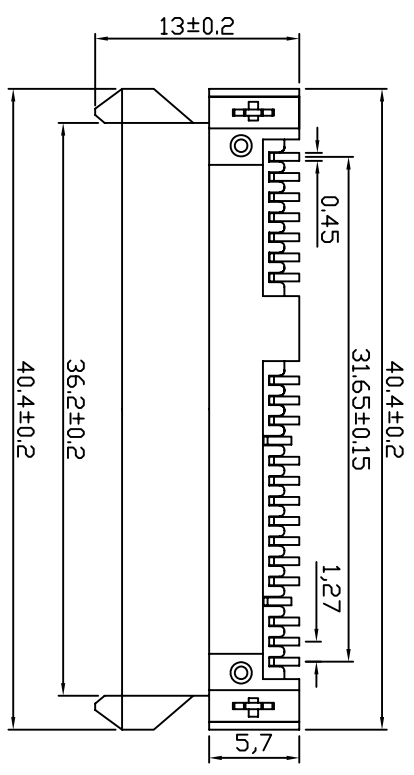
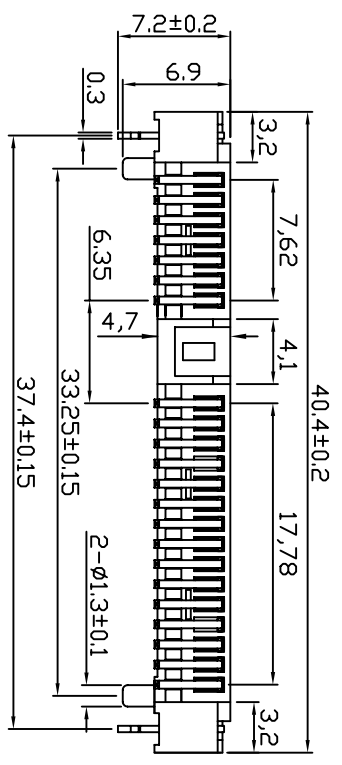
SPECIFICATIONS

1. MATERIAL:

Housig: LCP UL 94V-0
 Color: Black
 Contact: Phosphor bronze
 Peg: Brass

2. FINISH:

Contact: 3u" Gold/Tin plating on contact area
 100u" min. Tin-Lead Plating on soldertails
 50u" min. Nickel underplating over all
 PEG: 100u" min. Tin-Lead plating on soldertails
 50u" min. Nickel underplating over all



RECOMMEND PCB LAYOUT (T=1.2)
 PCB TOLERANCE: ±0.05

KLS Electronic CO., LTD

SCALE	UNLESS OTHERWISE SPECIFIED TOLERANCE
	ANG 0 ±0.3
	0.00 ±0.2
	0.00 ±0.05
UNIT:	mm

DRAWN: LI BEI LIN UNIT: mm DATE: 07/21/07

CHECKED: /

APPROVED: /

SIZE: A4 REV: A

A	SATA 7+15P H5.0 SMT 板上带鱼叉							A
B								B
C								C
D								D
E								E
F								F
G								G

SPECIFICATIONS

1. MATERIAL:

Housig: LCP UL 94V-0

Color: Black

Contact: Phosphor bronze

Peg: Brass

2. FINISH:

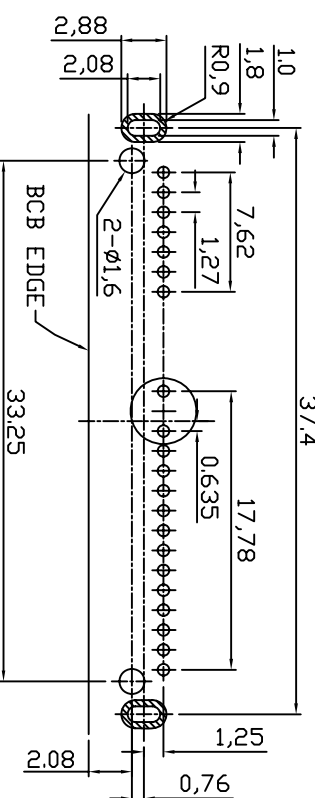
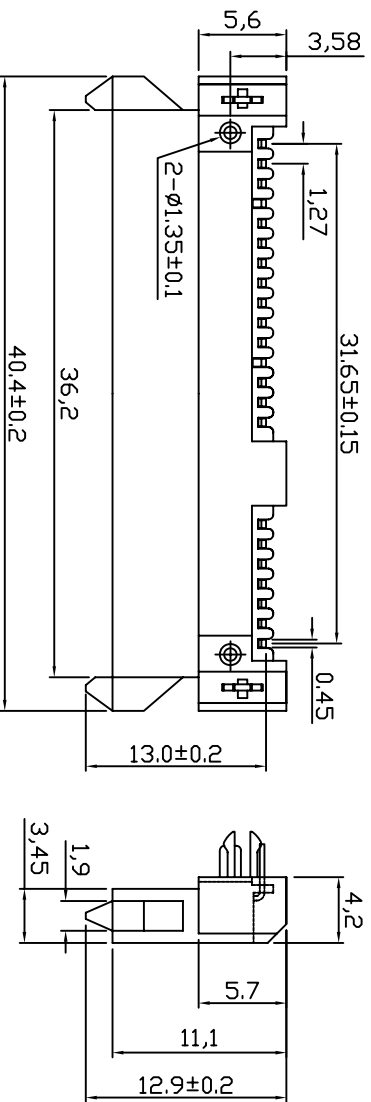
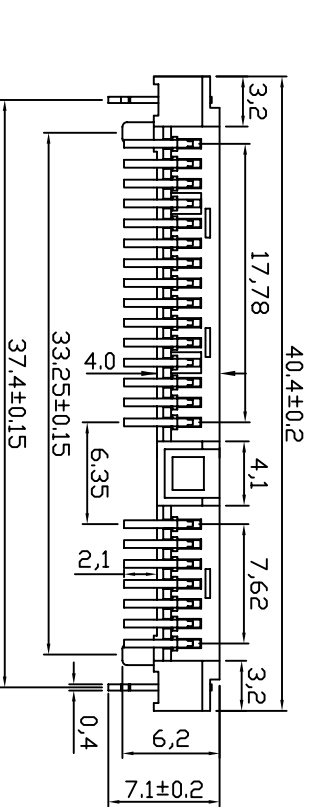
Contact: 3u" Gold/Tin plating on contact area

on soldertails 100u" min. Tin-Lead Plating

over all 50u" min. Nickel underplating

PEG: 100u" min. Tin-Lead plating on soldertails

over all 50u" min. Nickel underplating



RECOMMEND PCB LAYOUT (T=1.2)
PCB TOLERANCE: ±0.05

KLS Electronic CO., LTD

UNLESS OTHERWISE SPECIFIED TOLERANCE
ANG 0
0.0
0.00
±0.3
±0.2
±0.05

SCALE UNIT: mm

DRAWN LI BEI LIN 23/02/09

CHECKED

APPROVED

DRAWN NAME

PRODUCT NO.

SIZE A4

REV A

FILE NAME:

SATA 7+15 90° H4.2 板下

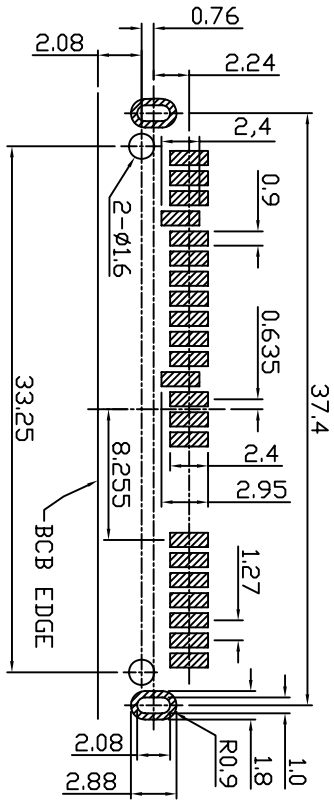
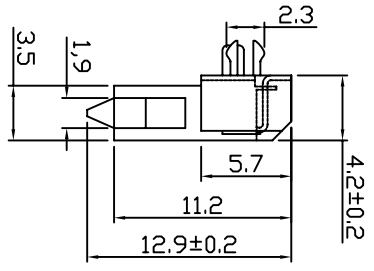
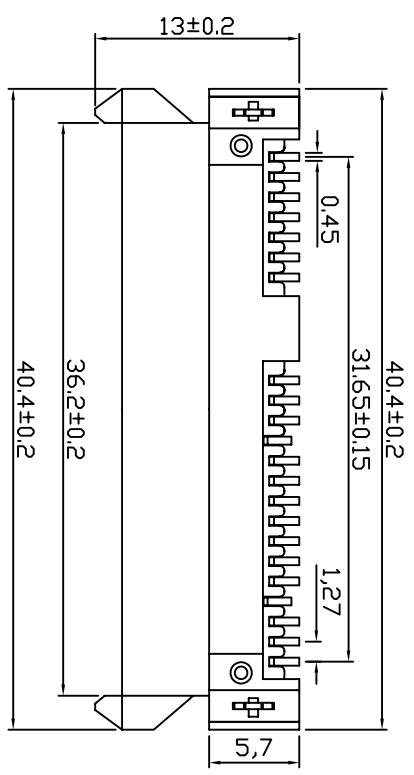
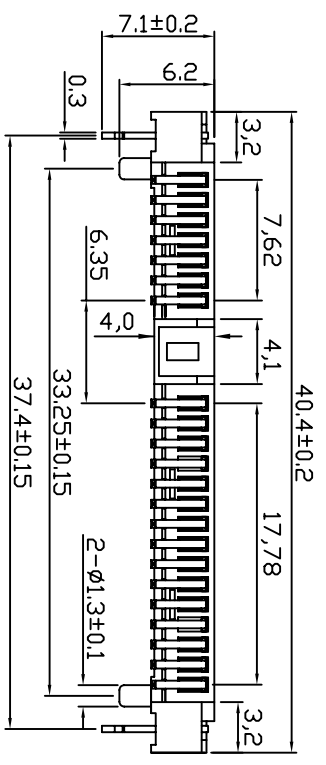
SPECIFICATIONS

1. MATERIAL:

Housig: LCP UL 94V-0
 Color: Black
 Contact: Phosphor bronze
 Peg: Brass

2. FINISH:

Contact: 3u" Gold/Tin plating on contact area
 100u" min. Tin-Lead Plating on soldertails
 50u" min. Nickel underplating over all
 PEG: 100u" min. Tin-Lead plating on soldertails
 50u" min. Nickel underplating over all



RECOMMEND PCB LAYOUT (T=1.2)
 PCB TOLERANCE: ±0.05

KLS Electronic CO., LTD

SCALE	UNLESS OTHERWISE SPECIFIED TOLERANCE	±.5"
	ANG	0
		±0.3
		±0.2
		±0.05
		.00
UNIT:		mm

DRAWN: LI BEI LIN 07/21/07

CHECKED

APPROVED

SIZE A4 REV A

1	2	3	4	5	6	7	8	9
SATA 7+15P H4.2 SMT 板上 带鱼叉								

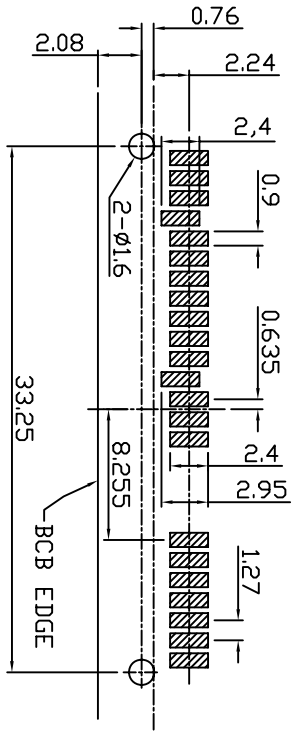
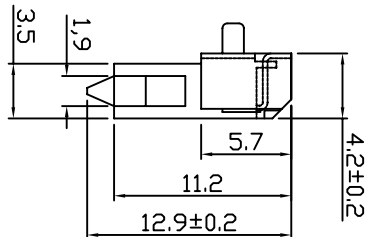
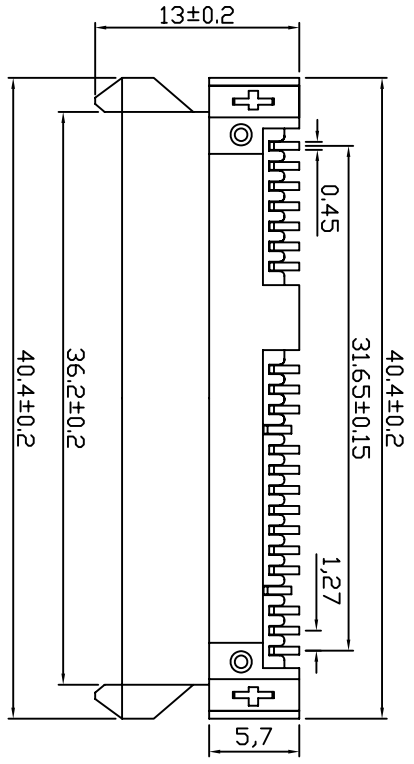
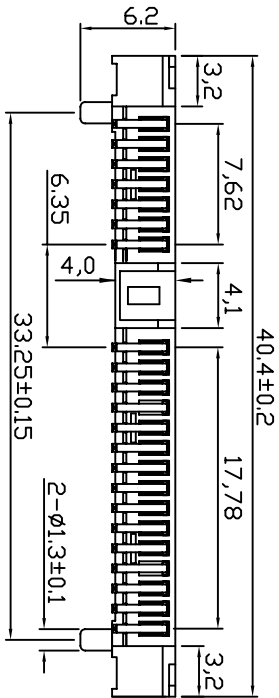
SPECIFICATIONS

1. MATERIAL:

Housig: LCP UL 94V-0
 Color: Black
 Contact: Phosphor bronze
 Peg: Brass

2. FINISH:

Contact: 3u" Gold/Tin plating on contact area
 100u" min. Tin-Lead Plating on soldertails
 50u" min. Nickel underplating over all
 PEG: 100u" min. Tin-Lead plating on soldertails
 50u" min. Nickel underplating over all



RECOMMEND PCB LAYOUT (T=1.2)
 PCB TOLERANCE: ±0.05

KLS Electronic Co., LTD

SCALE	UNLESS OTHERWISE SPECIFIED TOLERANCE	±.5%
	ANG	0
		±0.3
		±0.2
		±0.05
		.00
UNIT:		mm

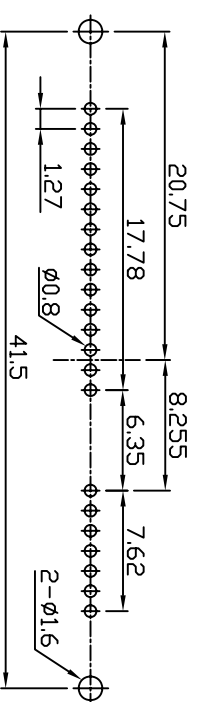
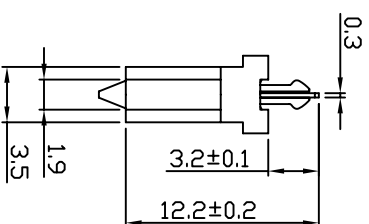
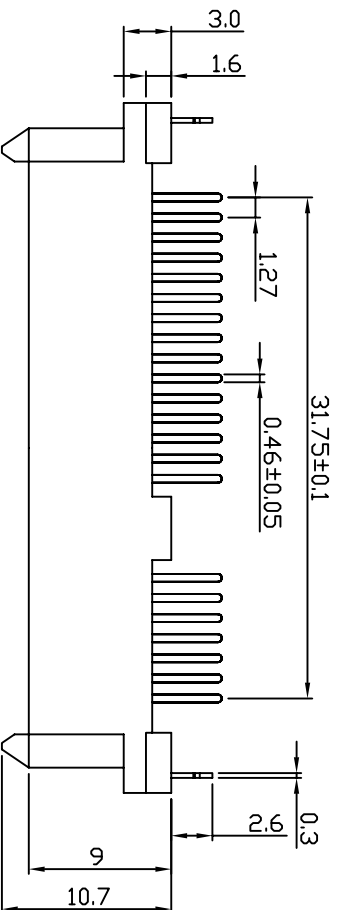
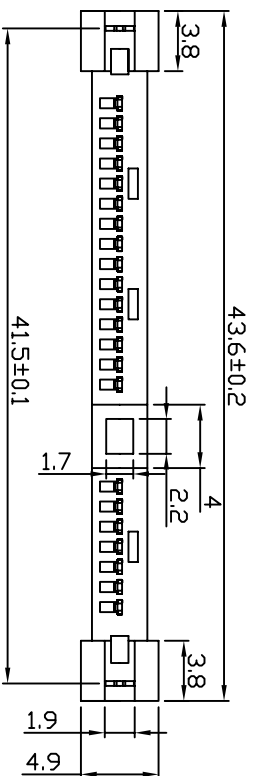
DRAWN: LI BEI LIN DATE: 07/11/08 DRAWN NAME:

CHECKED: APPROVED: PRODUCT NO.:

SIZE: A4 REV: A FILE NAME:

SATA 7+15P H4.2 SMT 板上 不带鱼叉

1	2	3	4	5	6	7	8	9
---	---	---	---	---	---	---	---	---



SPECIFICATIONS

1.MATERIAL:

Housig: LCP UL 94V-0

Color: Black

Contact: Phosphor bronze

Peg: Brass

2.FINISH:

Contact: 3u" Gold/Tin plating on contact

ared

100u" min.Tin-Lead Plating

on soldertails

50u" min.Nickel underplating

over all

PEG: 100u"min. Tin-Lead plating on

soldertails

50u"min.Nickel underplating

over all

PCB LAYOUT

LAYOUT PCB

UNLESS OTHERWISE SPECIFIED TOLERANCE

±.5"
±0.3
±0.2
±0.05

KLS Electronic CO.,LTD

SCALE: UNIT: mm

DRAWN: LI BEI LIN 20/12/08

DRAWN NAME: SATA 7+15

CHECKED: /

PRODUCT NO.:

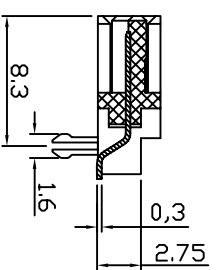
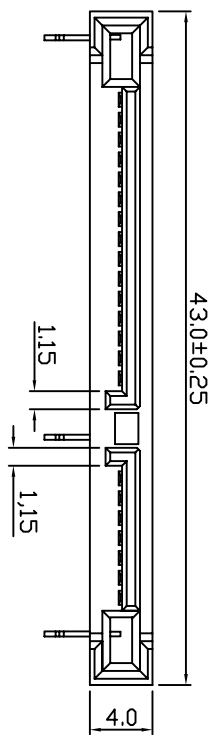
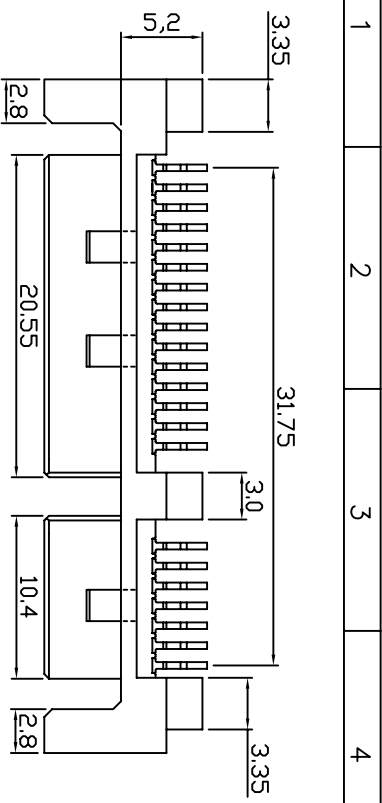
APPROVED: /

REV A

SIZE: A4

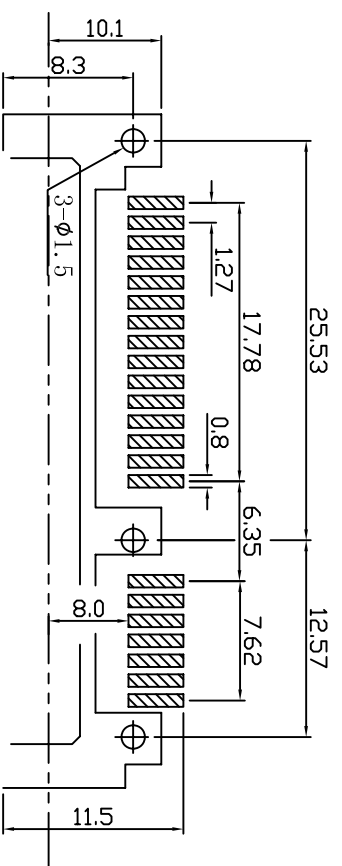
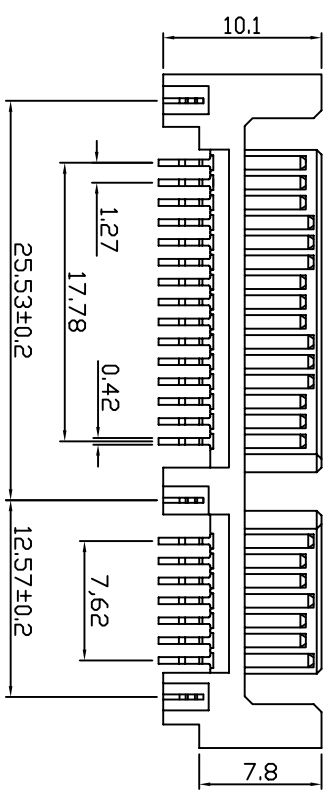
FILE NAME:

SATA 7+15 180° 带鱼叉



SPECIFICATIONS

- 1. MATERIAL:**
 Housing: LCP UL 94V-0
 Color: Black
 Contact: Phosphor bronze
 Peg: Brass
- 2. FINISH:**
 Contact: 3u" Gold/Tin plating on contact area
 100u" min. Tin-Lead Plating on soldertails
 50u" min. Nickel underplating over all
 PEG: 100u" min. Tin-Lead plating on soldertails
 50u" min. Nickel underplating over all



RECOMMEND PCB LAYOUT (T=1. 2)
 PCB TOLERANCE: ±0.05

KLS Electronic CO., LTD

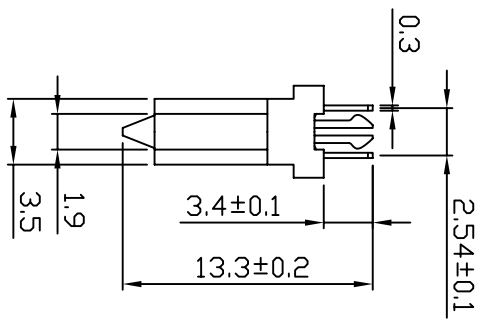
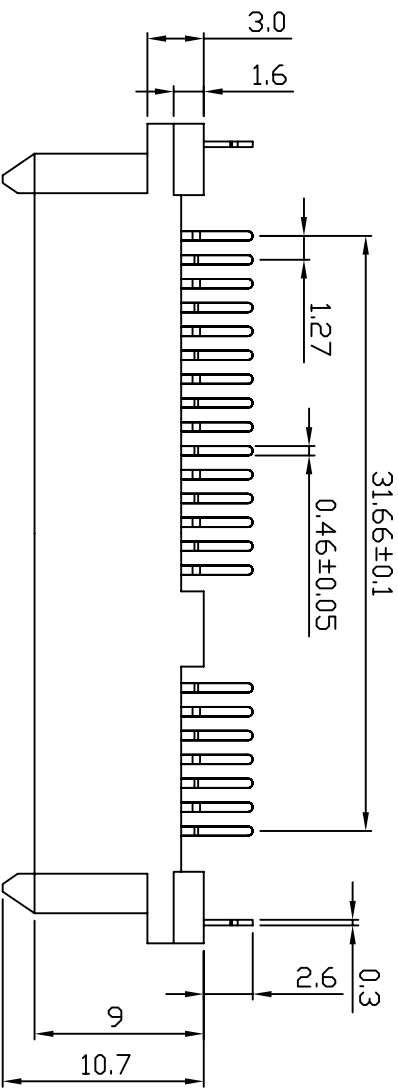
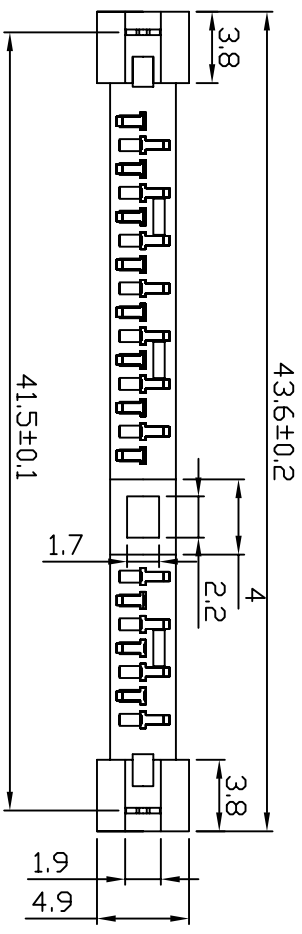
UNLESS OTHERWISE SPECIFIED TOLERANCE
 ANG 0 0.00
 ±0.3
 ±0.2
 ±0.05
 UNIT: mm

SCALE: mm
 DRAWN: LI BEI LIN 31/05/08
 CHECKED: /
 APPROVED: /

SATA 7+15 公座90° 加鱼叉SMT型

DRAWN NAME: /
 PRODUCT NO: /
 FILE NAME: /

1	2	3	4	5	6	7	8	9
A	B	C	D	E	F	G	A	A



SPECIFICATIONS

Current Rating: 3Amps
 Insulator Resistance: 5000mΩ Min
 Dielectric Withstanding: AC 500V
 Operating Temperature: -40°to+105°
 Contact Material: Copper alloy
 Insrator Material: Polyester,UL 94V-0 LCP
 Finish : Tin,Gold or Duplex plated
 Standard : Gold flash all over
 Max.Processing Temp: 230C*for 30-60seconds(260C*for 10 secinds)

KLS Electronic CO.,LTD

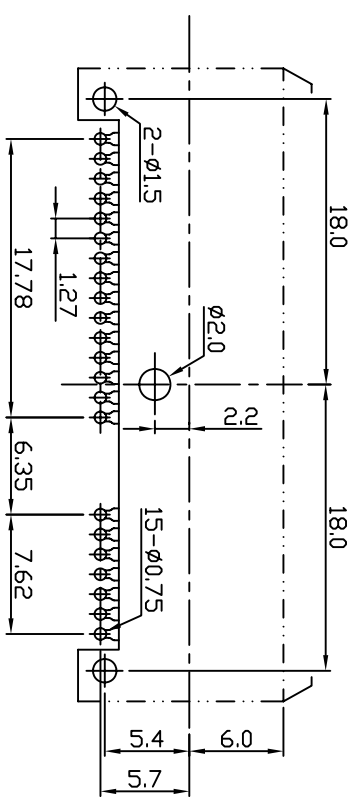
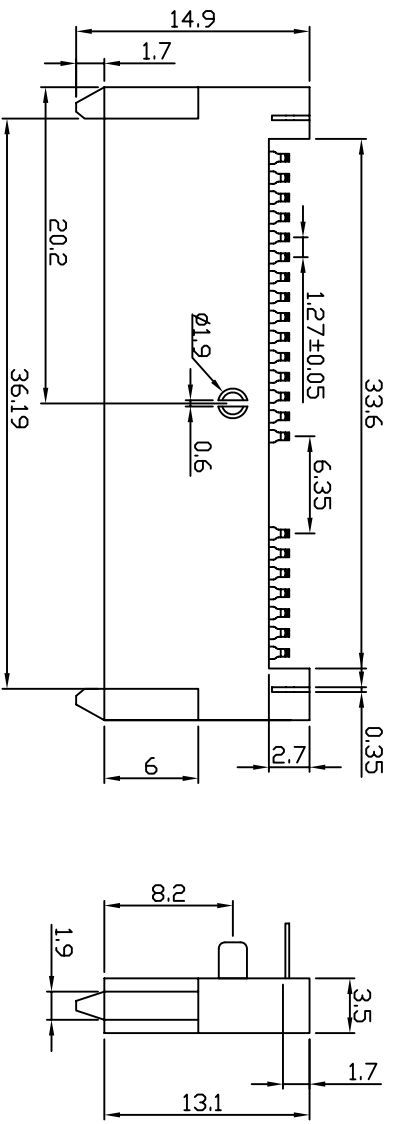
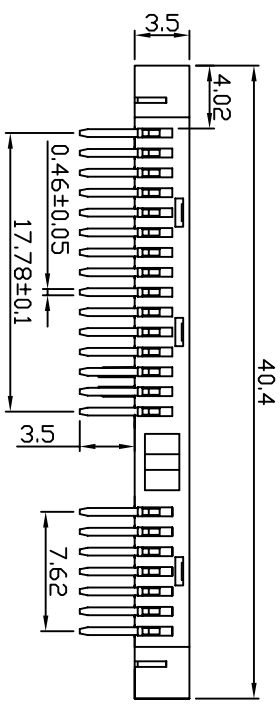
SCALE	UNLESS OTHERWISE SPECIFIED TOLERANCE
ANG	±5°
0.0	±0.3
0.0	±0.2
0.00	±0.05
UNIT:	mm

DRAWN: L1 BEI LIN 07/21/07
 CHECKED: / /
 APPROVED: / /

PRODUCT NO.:
 Pin header 2.0mm

SIZE: A4
 REV: A
 FILE NAME:

SATA 7+15 90° 短端子



SPECIFICATIONS

1.MATERIAL:

Housing: LCP UL 94V-0
 Color: Black
 Contact: Phosphor bronze
 Peg: Brass

2.FINISH:

Contact: 3u" Gold/Tin plating on contact area
 100u" min. Tin-Lead Plating on soldertails
 50u" min.Nickel underplating over all
 PEG: 100u"min. Tin-Lead plating on soldertails
 50u"min.Nickel underplating over all

PCB LAYOUT

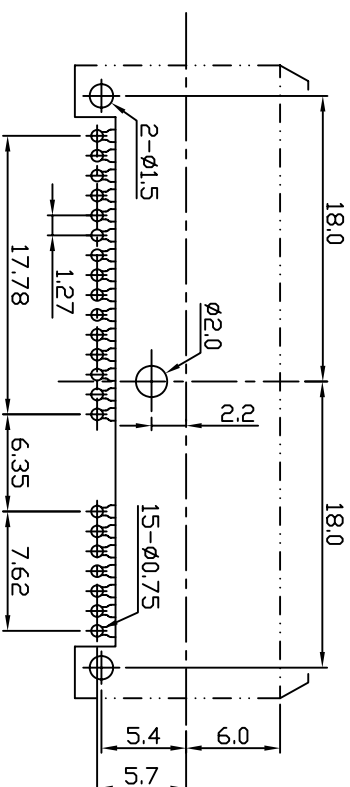
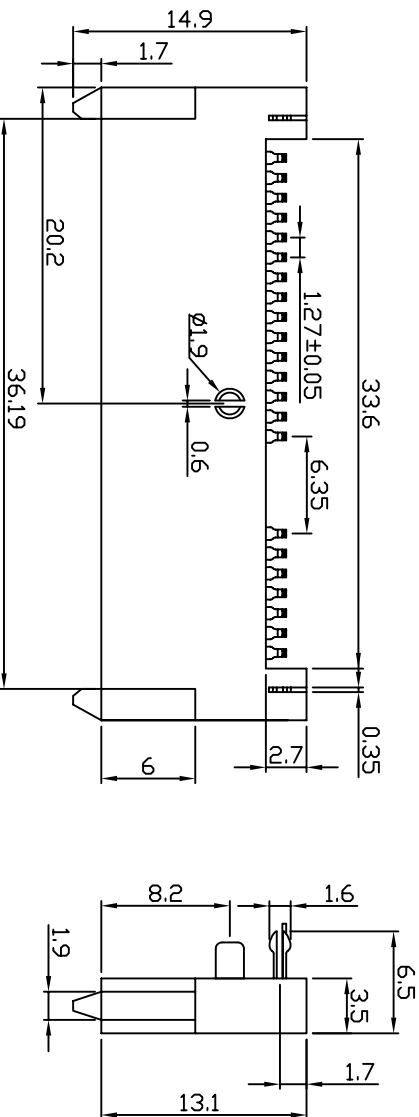
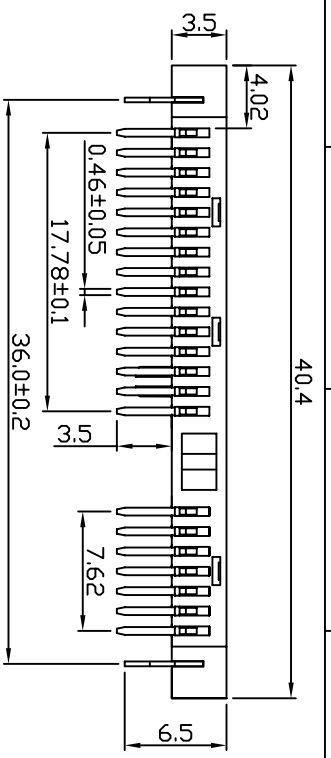
SATA 7+15 90° H3.5 不带鱼叉

KLS Electronic Co., LTD

SCALE	UNLESS OTHERWISE SPECIFIED TOLERANCE	±0.3
	ANG	±5°
		+0.2
		±0.05
DRAWN	LI BEI LIN	UNIT: mm
CHECKED		DATE: 07/21/07
APPROVED		

DRAWING NAME:	SATA 7+15P
PRODUCT NO.:	
FILE NAME:	

A	1	2	3	4	5	6	7	8	9
---	---	---	---	---	---	---	---	---	---



PCB LAYOUT

SPECIFICATIONS

1.MATERIAL:

- Housing: LCP UL 94V-0
- Color: Black
- Contact: Phosphor bronze
- Peg: Brass

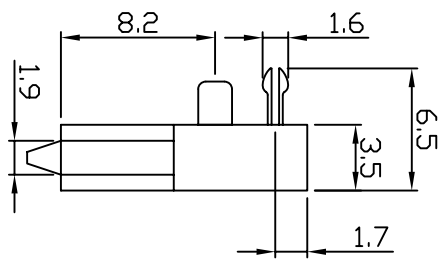
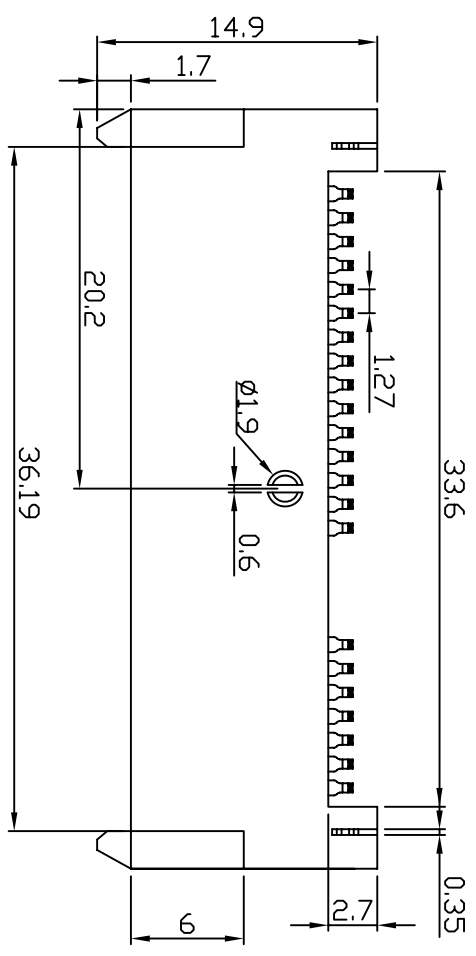
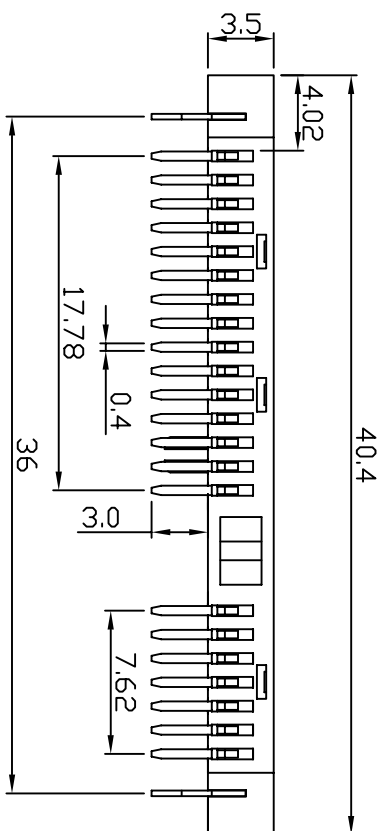
2.FINISH:

- Contact: 3u" Gold/Tin plating on contact area
- 100u" min. Tin-Lead Plating on soldertails
- 50u" min. Nickel underplating over all
- PEG: 100u"min. Tin-Lead plating on soldertails
- 50u"min. Nickel underplating over all

KLS Electronic CO.,LTD

UNLESS OTHERWISE SPECIFIED TOLERANCE		DRAWN NAME	
ANG	±5°	DATE	07/21/07
0	±0.3	SCALE	mm
0.00	±0.2	DRAWN	LI BEI LIN
0.00	±0.05	UNIT:	mm
CHECKED		DRAWN NAME	
APPROVED		PRODUCT NO. SATA 7+1SP	
SIZE A4		FILE NAME:	
REV A			

SATA 7+15 90° H3.5 带鱼叉

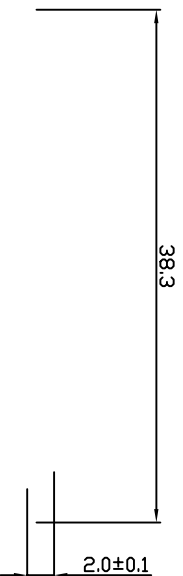
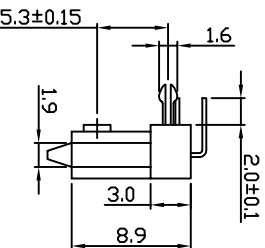
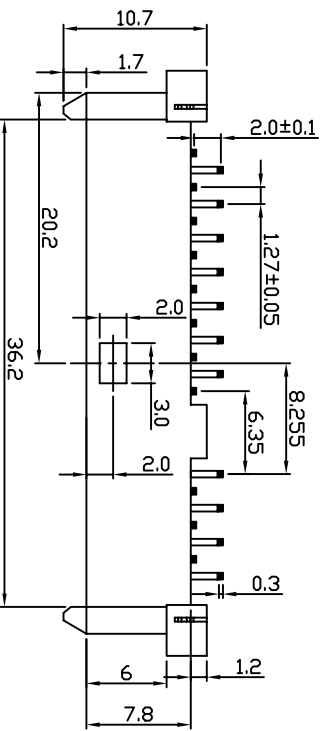
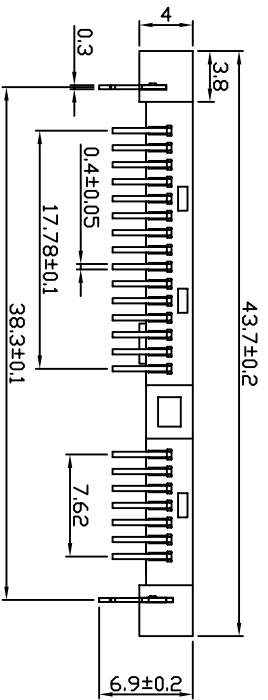


SPECIFICATIONS

- 1. MATERIAL:**
 Housing: LCP UL 94V-0
 Color: Black
 Contact: Phosphor bronze
 Peg: Brass
- 2. FINISH:**
 Contact: 3u" Gold/Tin plating on contact area
 min. Tin-Lead Plating on soldertails
 50u" min. Nickel underplating over all
 PEG: 100u" min. Tin-Lead plating on soldertails
 50u" min. Nickel underplating over all

UNLESS OTHERWISE SPECIFIED TOLERANCE		KLS Electronic CO., LTD	
ANG	±5°		
0	±0.3		
.00	±0.2		
.00	±0.05		
SCALE	UNIT:		
	mm		
DRAWN	李北林	DRAWN NAME	Pin header 2.0mm
CHECKED		PRODUCT NO.	
APPROVED		FILE NAME:	

SATA 7+15 90°			
1	2	3	4
5	6	7	8
9			



PCB LAYOUT

SATA 7+15 90° H7.8 中间带凸台

SPECIFICATIONS

1.MATERIAL:

Housing: LCP UL 94V-0
 Color: Black
 Contact: Phosphor bronze
 Peg: Brass

2.FINISH:

Contact: 3u" Gold/Tin plating on contact area
 100u" min. Tin-Lead Plating on soldertails
 50u" min.Nickel underplating over all
 PEG: 100u"min. Tin-Lead plating on soldertails
 50u"min.Nickel underplating over all

KLS Electronic Co., LTD

SCALE	UNLESS OTHERWISE SPECIFIED TOLERANCE	UNIT:
LI BET LIN	ANG 0 0.0 0.00	mm
	±0.3 ±0.2 ±0.05	

DRAWN: LI BET LIN

DRAWN NAME: SAT17+15

CHECKED

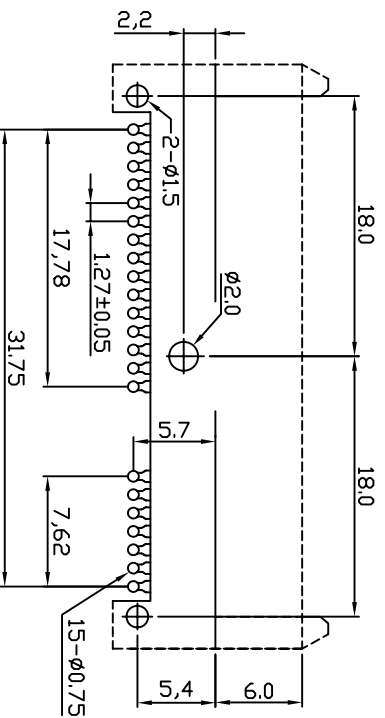
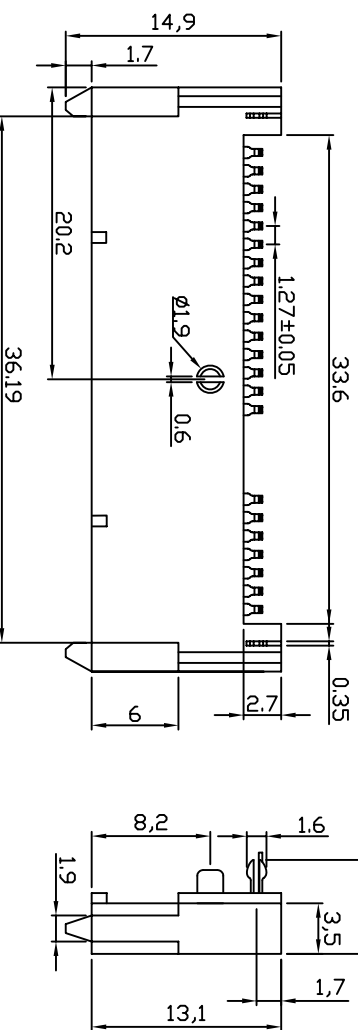
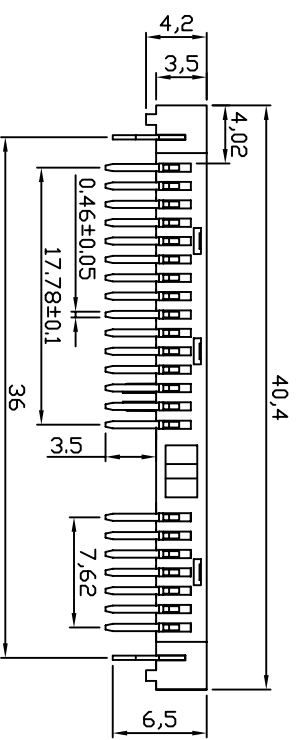
PRODUCT NO. SAT17+15

APPROVED

FILE NAME:



SIZE A4 REV A



SPECIFICATIONS

1. MATERIAL:

Housing: LCP UL 94V-0
 Color: Black
 Contact: Phosphor bronze
 Peg: Brass

2. FINISH:

Contact: 3u" Gold/Tin plating on contact area
 100u" min. Tin-Lead Plating on soldertails
 over all
 PEG: 100u" min. Tin-Lead plating on soldertails
 over all
 50u" min. Nickel underplating

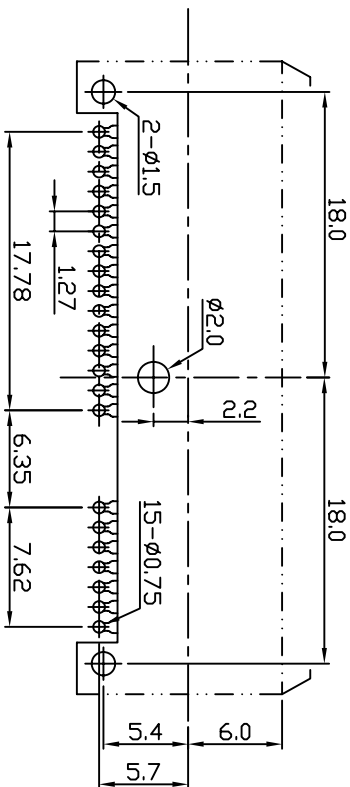
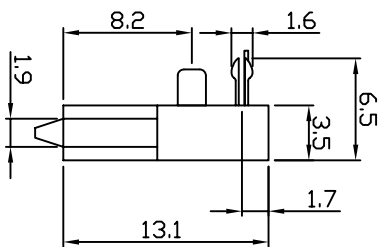
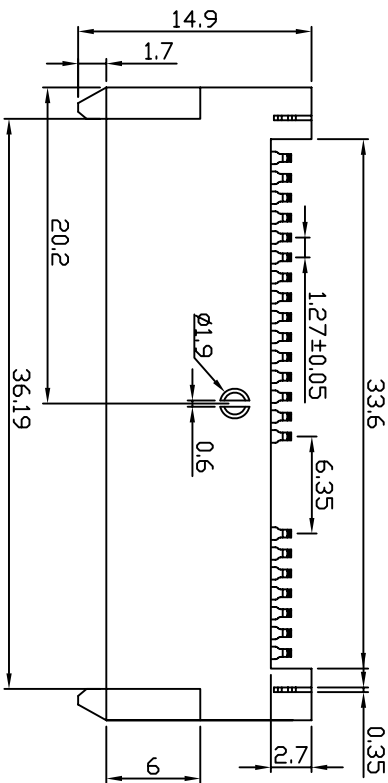
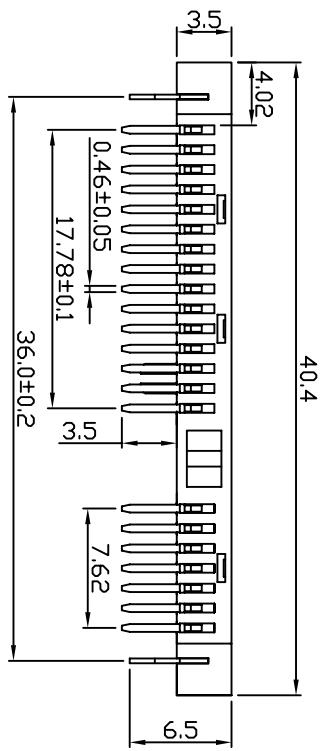
RECOMMEND PCB LAYOUT

SATA 7+15 90° 板下

UNLESS OTHERWISE SPECIFIED TOLERANCE
 ANG 0
 DEC 0.00
 DIM ±0.3
 HOLE ±0.2
 POSITION ±0.05

KLS Electronic co.,LTD

SCALE	UNIT:	mm
DRAWN	LI BEI LIN	09/21/07
CHECKED		
APPROVED		
SIZE	A4	REV A
PRODUCT NO.	Pin header 2.0mm	
FILE NAME:		



PCB LAYOUT

SPECIFICATIONS

1.MATERIAL:

Housing: LCP UL 94V-0
 Color: Black
 Contact: Phosphor bronze
 Peg: Brass

2.FINISH:

Contact: 3u" Gold/Tin plating on contact area
 100u" min. Tin-Lead Plating on soldertails
 50u" min.Nickel underplating over all
 PEG: 100u"min. Tin-Lead plating on soldertails
 50u"min.Nickel underplating over all

KLS Electronic co.,LTD

SCALE	UNLESS OTHERWISE SPECIFIED TOLERANCE	±0.3
	ANG	±0.2
	0	±0.05
	0.00	
	0.00	
DRAWN	UNIT:	mm
LI BEI LIN	DATE:	07/21/07

DRAWN NAME:

SATA 7+15P

CHECKED

PRODUCT NO.:

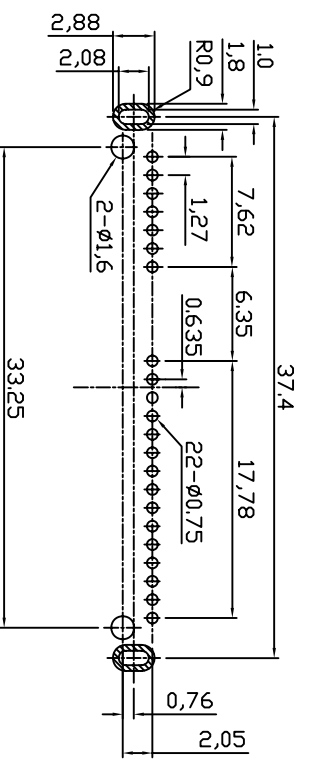
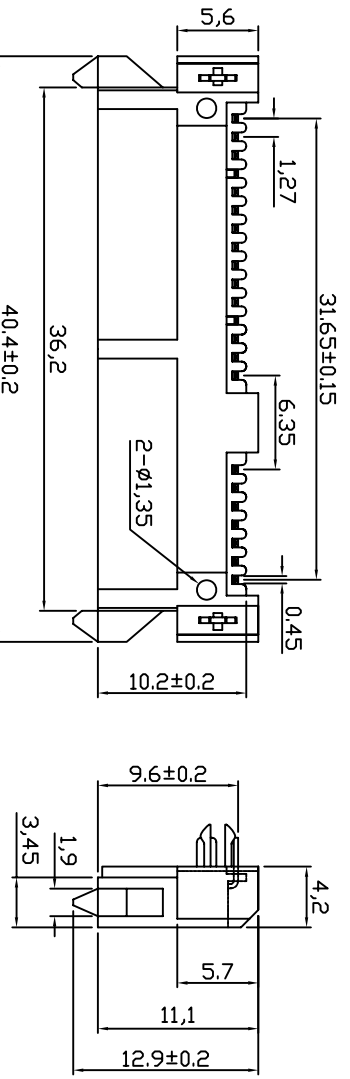
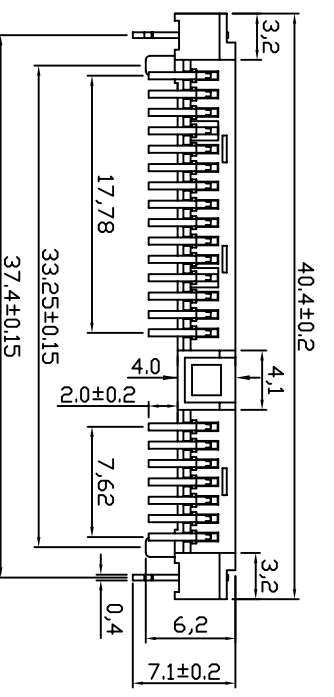
APPROVED

FILE NAME:



SIZE A4 REV A

SATA 7+15 90° H3.5 带鱼叉



RECOMMEND PCB LAYOUT (T=1.2)
PCB TOLERANCE: ±0.05

SPECIFICATIONS

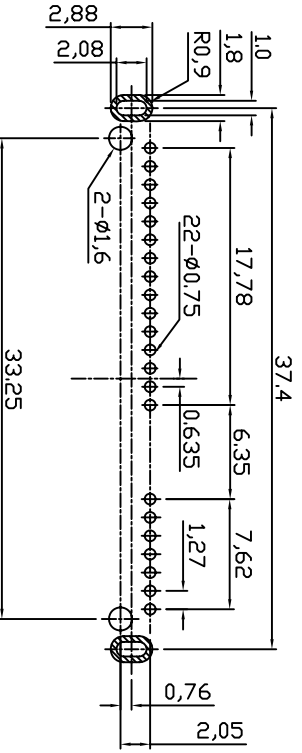
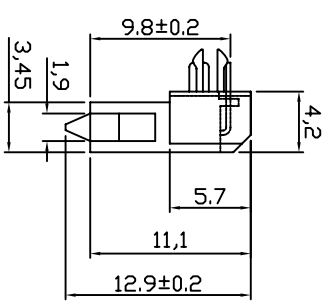
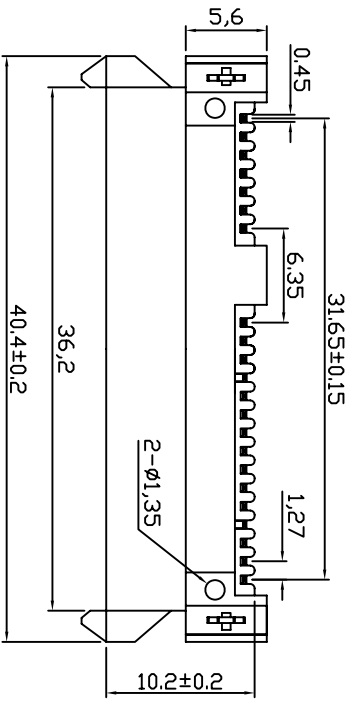
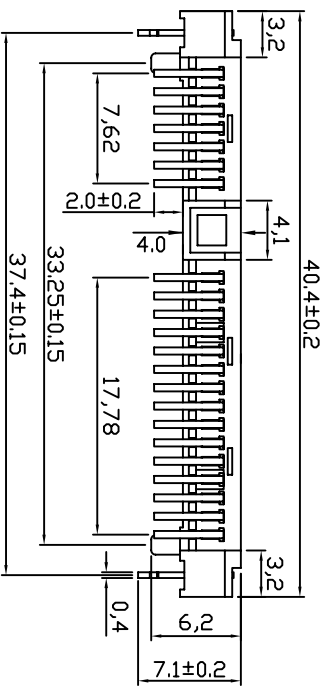
1. MATERIAL:
 Housing: LCP UL 94V-0
 Color: Black
 Contact: Phosphor bronze
 Peg: Brass
2. FINISH:
 Contact: 3u" Gold/Tin plating on contact area
 100u" min. Tin-Lead Plating on soldertails
 50u" min. Nickel underplating over all
 PEG: 100u" min. Tin-Lead plating on soldertails
 50u" min. Nickel underplating over all

KLS Electronic CO., LTD

SCALE	UNLESS OTHERWISE SPECIFIED TOLERANCE	UNIT:	mm
DRAWN	LI BEI LIN	DATE	06/09/08
CHECKED		PRODUCT NO.	Pin header 2.0mm
APPROVED		FILE NAME:	

SIZE	A4	REV	A
PRODUCT NO.			
FILE NAME:			

SATA 7+15 90° H4.2 板下 带三杠



SPECIFICATIONS

1. MATERIAL:

Housing: LCP UL 94V-0
 Color: Black
 Contact: Phosphor bronze
 Peg: Brass

2. FINISH:

Contact: 3u" Gold/Tin plating on contact area
 100u" min. Tin-Lead Plating on soldertails
 50u" min. Nickel underplating over all
 PEG: 100u" min. Tin-Lead plating on soldertails
 50u" min. Nickel underplating over all

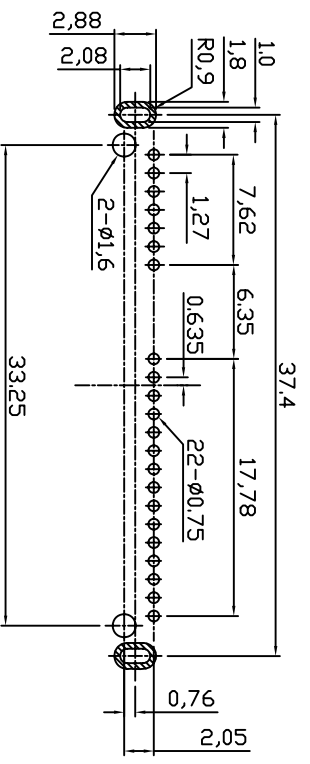
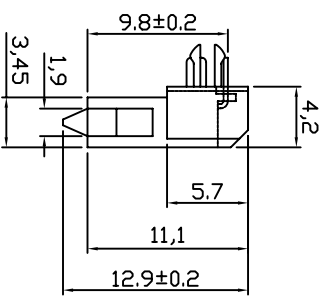
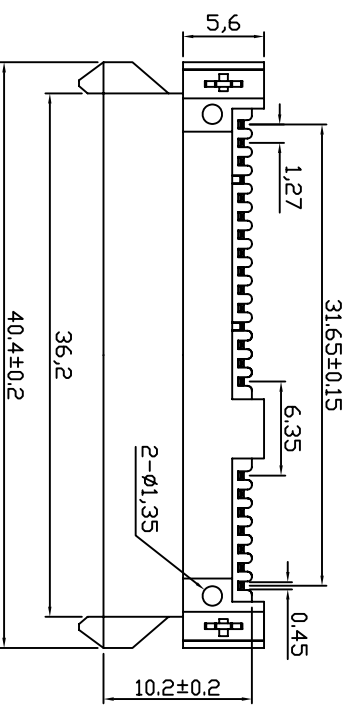
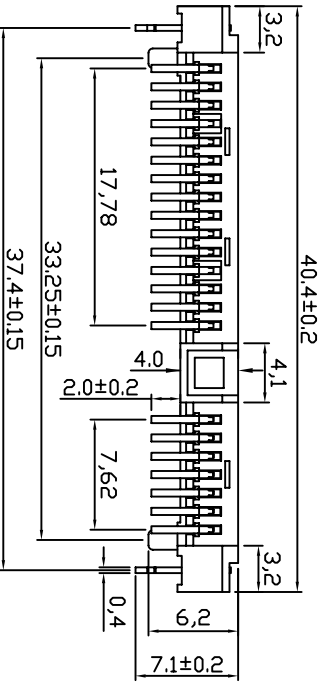
RECOMMEND PCB LAYOUT (T=1.2)
 PCB TOLERANCE: ±0.05

KLS Electronic co.,LTD

SCALE	UNLESS OTHERWISE SPECIFIED TOLERANCE	UNIT:	mm
DRAWN	LI BEI LIN	DATE	06/09/08
CHECKED			
APPROVED			
SIZE	A4	REV	A
PRODUCT NO.	Pin header 2.0mm		
FILE NAME:			

SATA 7+15 90° H4.2 板上

A	1	2	3	4	5	6	7	8	9
---	---	---	---	---	---	---	---	---	---



RECOMMEND PCB LAYOUT (T=1.2)
PCB TOLERANCE: ±0.05

SPECIFICATIONS

1. MATERIAL:
 Housing: LCP UL 94V-0
 Color: Black
 Contact: Phosphor bronze
 Peg: Brass
2. FINISH:
 Contact: 3u" Gold/Tin plating on contact area
 100u" min. Tin-Lead Plating on soldertails
 50u" min. Nickel underplating over all
 PEG: 100u" min. Tin-Lead plating on soldertails
 50u" min. Nickel underplating over all

KLS Electronic CO., LTD

SCALE	UNLESS OTHERWISE SPECIFIED TOLERANCE	UNIT:	mm
DRAWN	LI BEI LIN	DATE	06/09/08
CHECKED		PRODUCT NO.	Pin header 2.0mm
APPROVED		SIZE	A4
		REV	A

SATA 7+15 90° H4.2 板下

1	2	3	4	5	6	7	8	9
---	---	---	---	---	---	---	---	---

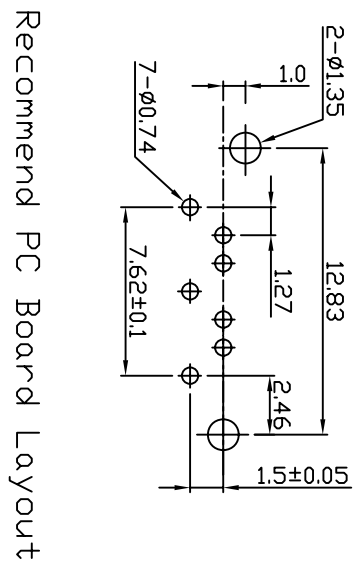
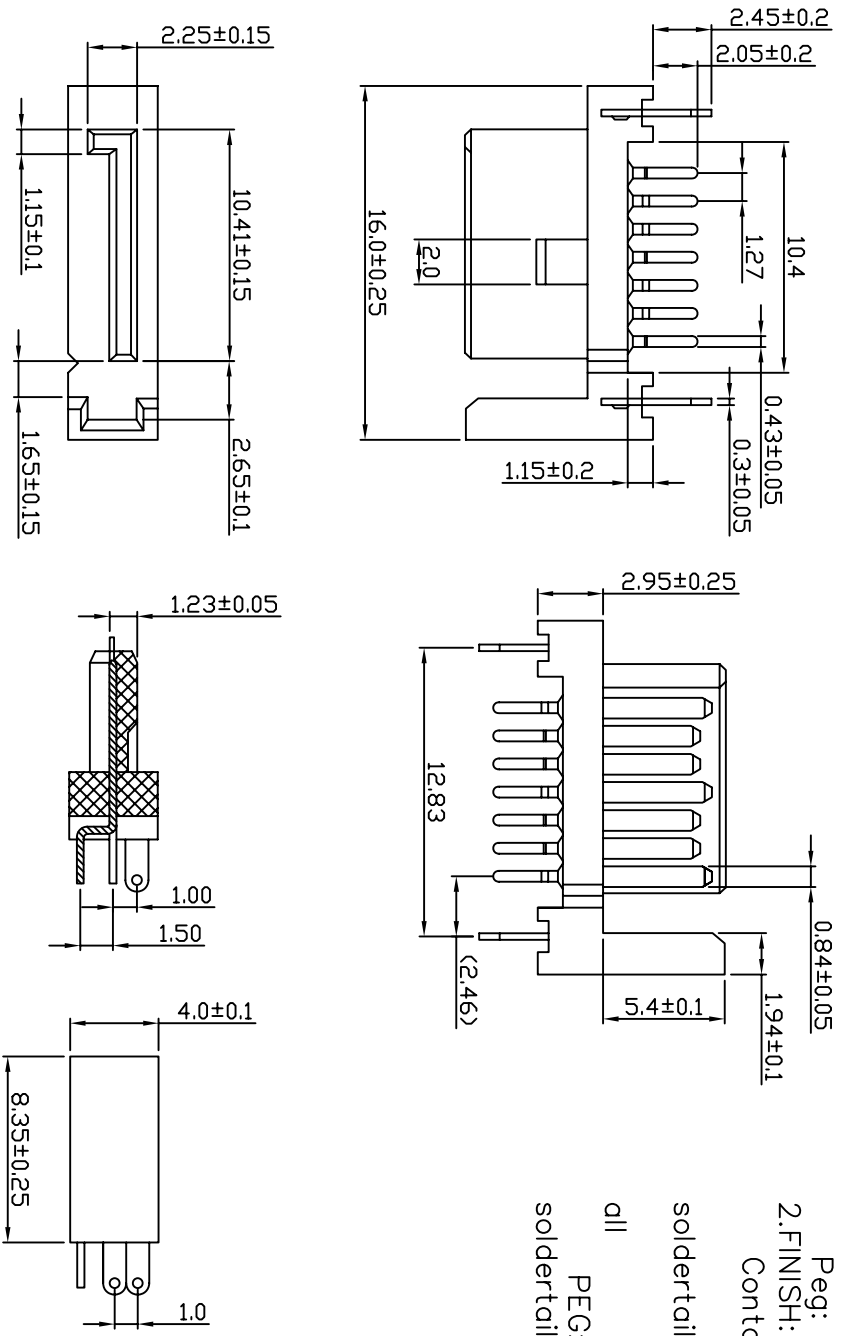
SPECIFICATIONS

1. MATERIAL:

Housig: LCP UL 94V-0
 Color: Black
 Contact: Phosphor bronze
 Peg: Brass

2. FINISH:

Contact: 3u" Gold/Tin plating on contact area
 100u" min. Tin-Lead Plating on
 soldertails
 50u" min. Nickel underplating over
 all
 PEG: 100u" min. Tin-Lead plating on
 soldertails
 50u" min. Nickel underplating over all



KIS Electronic CO., LTD

UNLESS OTHERWISE SPECIFIED TOLERANCE	±.5°
ANG	0
	±.02
	±.005
SCALE	UNIT: mm

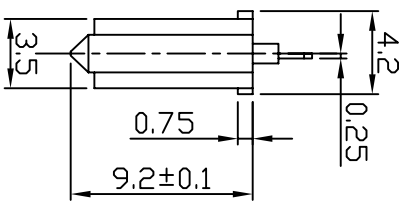
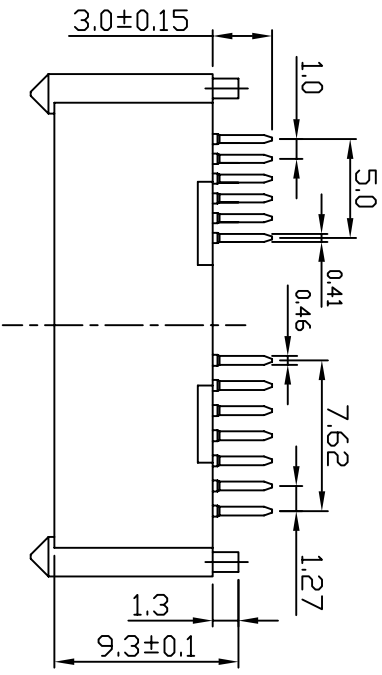
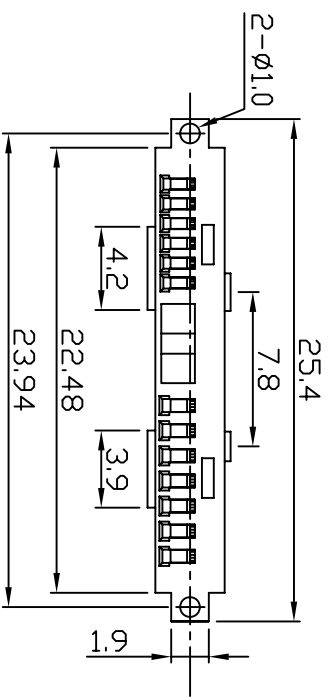
DRAWN NAME: 李北林

CHECKED: 17/06/08

APPROVED: / /

SIZE: A4 REV: A

SATA 7P B TYPE 单柱插板式	
1	2
3	4
5	6
7	8
9	



SPECIFICATIONS

1.MATERIAL:

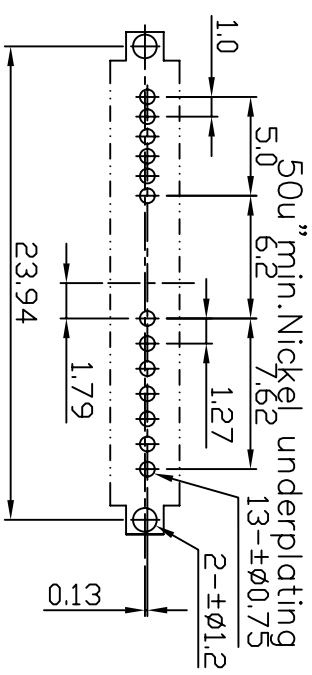
- Housig: LCP UL 94V-0
- Color: Black
- Contact: Phosphor bronze
- Peg: Brass

2.FINISH:

- Contact: 3u" Gold/Tin plating on contact area
- 100u" min. Tin-Lead Plating on soldertails
- 50u" min.Nickel underplating over all soldertails

PEG: 100u"min. Tin-Lead plating on soldertails

over all



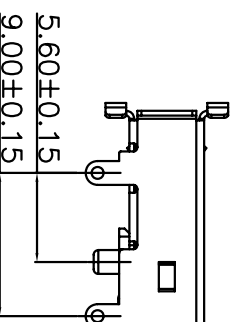
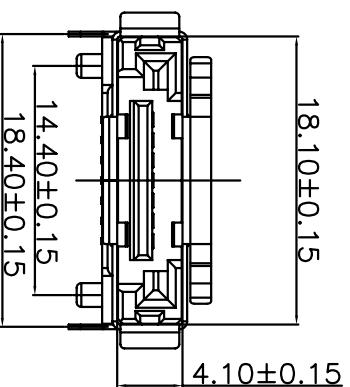
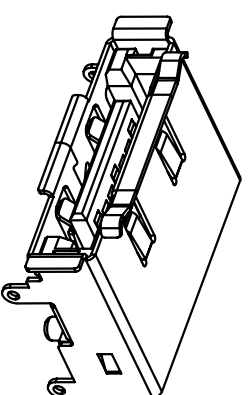
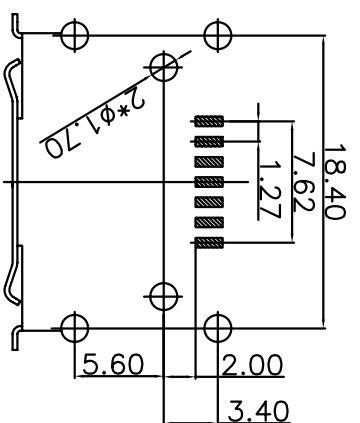
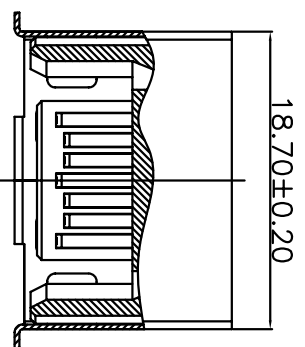
PCB LAYOUT

KLS Electronic co.,LTD

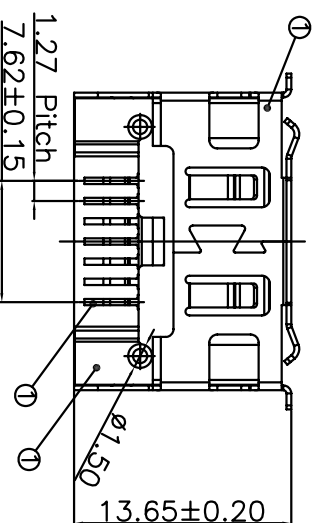
UNLESS OTHERWISE SPECIFIED TOLERANCE		DRAWN NAME	
ANG	±5°	DATE: 06/01/09	
0	±0.3	DRAWN: LI BEI LIN	
0.00	±0.2	CHECKED:	
0.00	±0.05	DATE: 06/01/09	
UNIT:	mm	DRAWN NAME	
SCALE	1:1	DATE: 06/01/09	
DRAWN	LI BEI LIN	DRAWN NAME	
CHECKED		DATE: 06/01/09	
APPROVED		DRAWN NAME	
SIZE	A4	DATE: 06/01/09	
REV	A	DRAWN NAME	
FILE NAME:		DATE: 06/01/09	

SATA 6+7p 180°

1	2	3	4	5	6	7	8	9
A	B	C	D	E	F	G	A	B



SPECIFICATION:
MATERIAL:
 HOUSING:PA6T 30% GF UL 94V-0
 COLOR:BLACK
 CONTACT:Bronze C5191-H,T=0.25mm
 SHELL:BRASS C2680R-H,T=0.30mm
 FINISH
 CONTACT:3u" GOLD/TIN PLATING ON CONTACT AREA
 100u" MIN.TIN-LEAD PLATING ON SOLDERTAILS
 50u" MIN.NICKEL UNDERPLATING OVERALL
 PEG:100u" MIN.TIN-LEAD PLATING ON SOLDERTAILS
 50u" MIN.NICKEL UNDERPLATING OVERALL



KLS Electronic CO., LTD

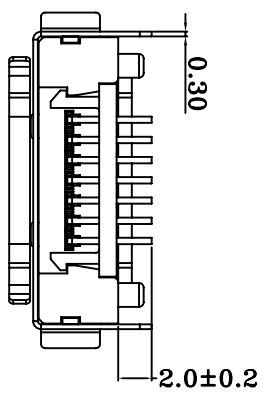
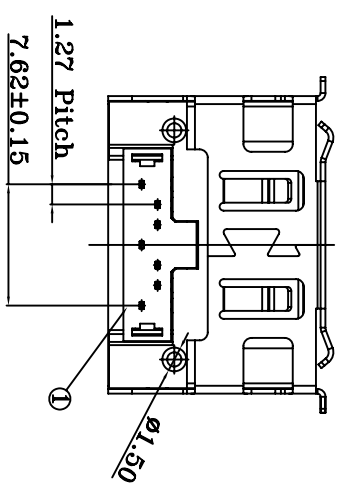
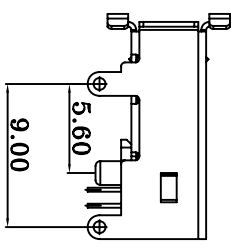
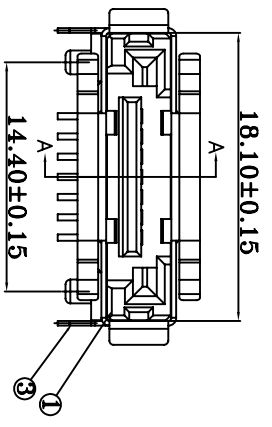
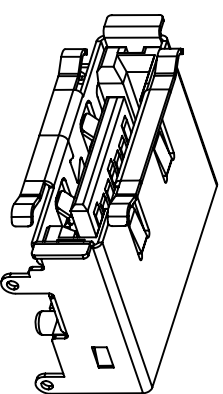
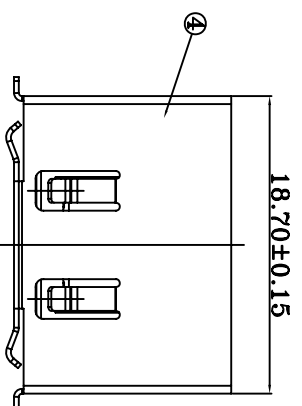
UNLESS OTHERWISE SPECIFIED TOLERANCE	
ANG	±5°
0	±0.3
.0	±0.15
.00	±0.05
SCALE	UNIT
	mm
DRAWN	DATE
Li Bei Lin	06/06/08
CHECKED	
APPROVED	

DRAWN NAME: _____
 PRODUCT NO. _____

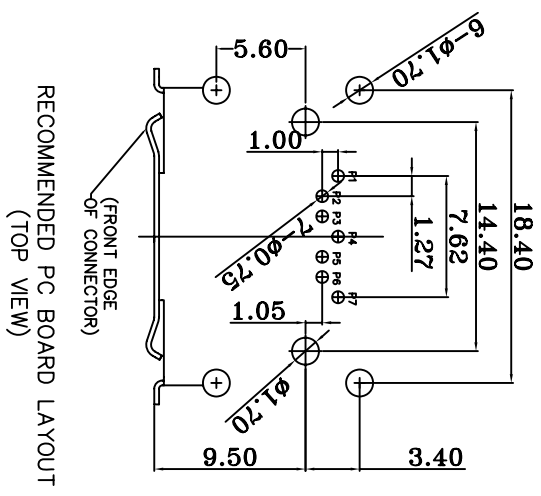
E_SATA 7P - 正向 SMT (板上)

APPROVED	SIZE	REV	FILE NAME:
	A4	A	

PRODUCT NO. _____
 FILE NAME: _____



SPECIFICATION:
MATERIAL: HOUSING:PA6T 30% GF UL 94V-0
COLOR:BLACK
CONTACT:Bronze C5191-H,T=0.25mm
SHELL:BRASS C2680R-H,T=0.30mm
FINISH
CONTACT:3u" GOLD/TIN PLATING ON CONTACT AREA
100u" MIN.TIN-LEAD PLATING ON SOLDERTAILS
50u" MIN.NICKEL UNDERPLATING OVERALL
PEG:100u" MIN.TIN-LEAD PLATING ON SOLDERTAILS
50u" MIN.NICKEL UNDERPLATING OVERALL



UNLESS OTHERWISE SPECIFIED TOLERANCE

ANG	±5°
0	±0.3
0.0	±0.15
0.00	±0.05

KLS Electronic CO., LTD

SCALE	UNIT
1:1	mm

DRAWN	LI BEI LIN	06/06/08
CHECKED		
APPROVED		

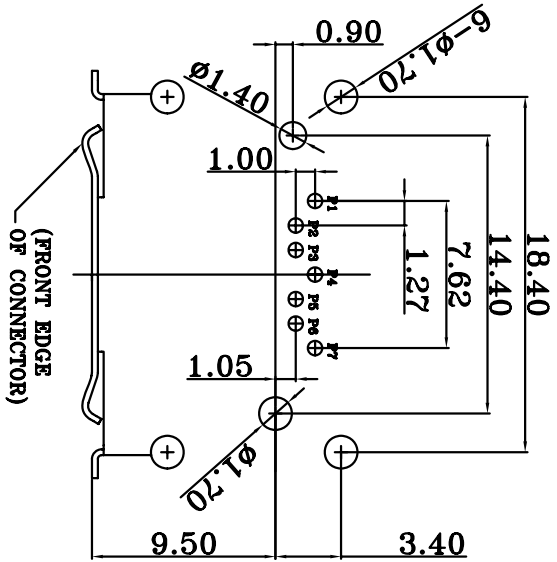
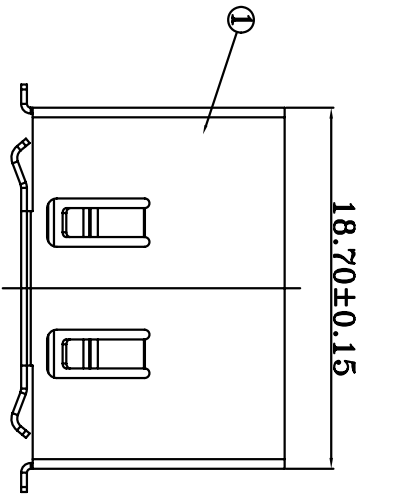
SIZE	REV
A4	A

PRODUCT NO.	PROGRAM NAME
	E_SATA 7P - C (DIP Type)
FILE NAME:	

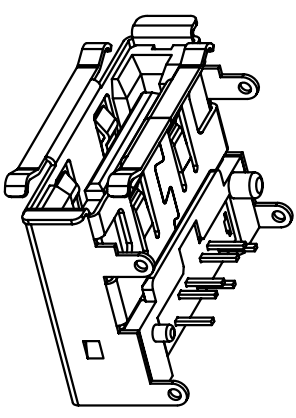
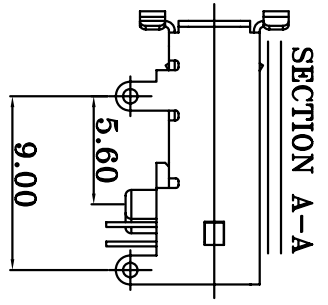
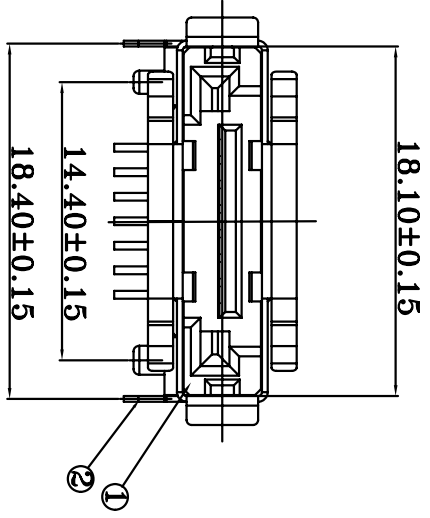
E_SATA 7P - C (DIP Type) 板上

1	2	3	4	5	6	7	8	9
A	B	C	D	E	F	G	A	B

REV	DESCRIPTION	APPRO.	CHANGE DATE
△	原始尺寸		



RECOMMENDED PC BOARD LAYOUT



QUALITY SYMBOLS	GENERAL TOLERANCES (UNLESS SPECIFIED)				SIGNATORY	DATE
	MM	INCH		DRAW		
0	0~5	±0.15	0~5	±	DESIGN	
	5~10	±0.20	5~10	±	CHECK	
	10~20	±0.25	10~20	±	APPRO.	
	20~	±0.30	20~	±		
△	ANGULAR ±1°					

KLS Electronic co., LTD

TITLE: E_SATA 7P - D (DIP Type)

PART NO. 061204-R

SCALE 1:1 UNIT:mm SHEET: 1 of 1

THIS DRAWING CONTAINS INFORMATION THAT IS PROPRIETARY TO *** INCORPORATED AND SHOULD NOT BE USED WITHOUT WRITTEN PERMISSION

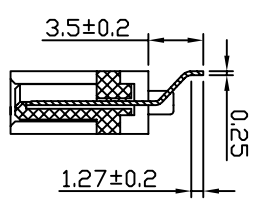
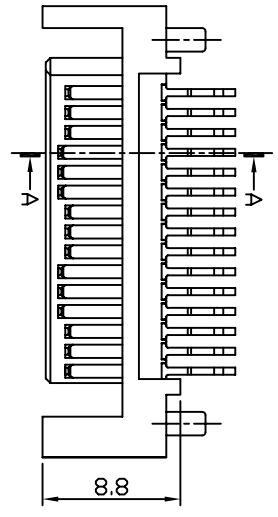
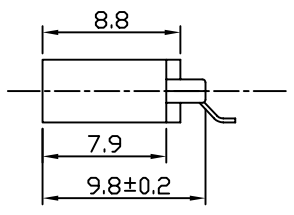
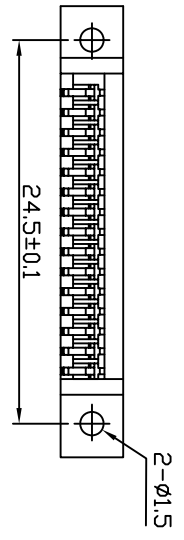
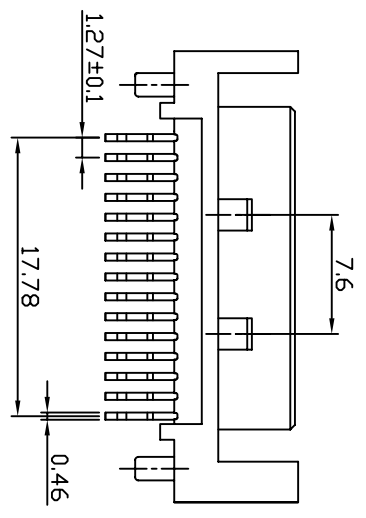
SPECIFICATIONS

1. MATERIAL:

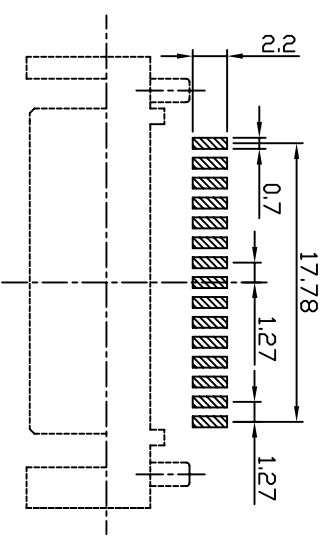
Housig: LCP UL 94V-0
 Color: Black
 Contact: Phosphor bronze
 Peg: Brass

2. FINISH:

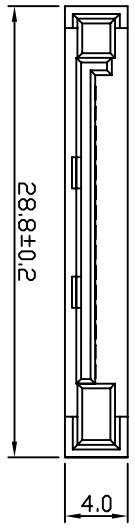
Contact: 3u" Gold/Tin plating on contact area
 100u" min. Tin-Lead Plating on
 soldertails
 50u" min. Nickel underplating
 over all
 PEG: 100u" min. Tin-Lead plating on
 soldertails
 50u" min. Nickel underplating over
 all



A-A SECTION



PCB LAYOUT



KLS Electronic CO., LTD

SCALE	UNLESS OTHERWISE SPECIFIED TOLERANCE
DRAWN	ANG ±.5°
CHECKED	0 ±0.2
APPROVED	.00 ±0.05
UNIT:	mm

DRAWN	LI BEI LIN	30/10/08	DATE
CHECKED			
APPROVED			
PRODUCT NO.	SATA 15Pin		
FILE NAME:			

SATA 15P SMT 公座

A	1	2	3	4	5	6	7	8	9
---	---	---	---	---	---	---	---	---	---