

# Switch

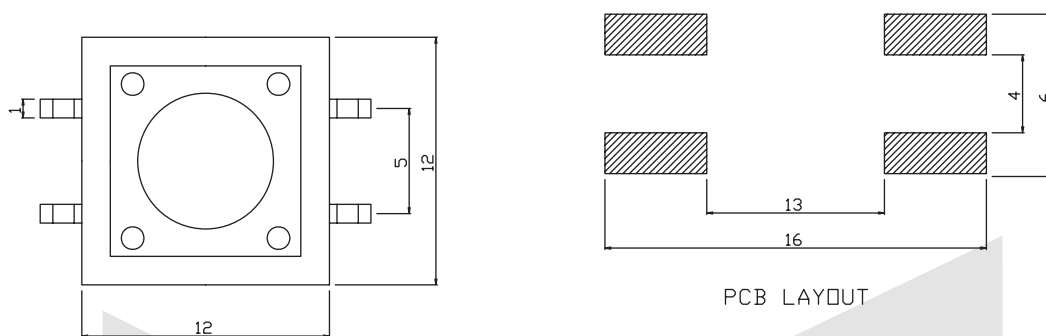
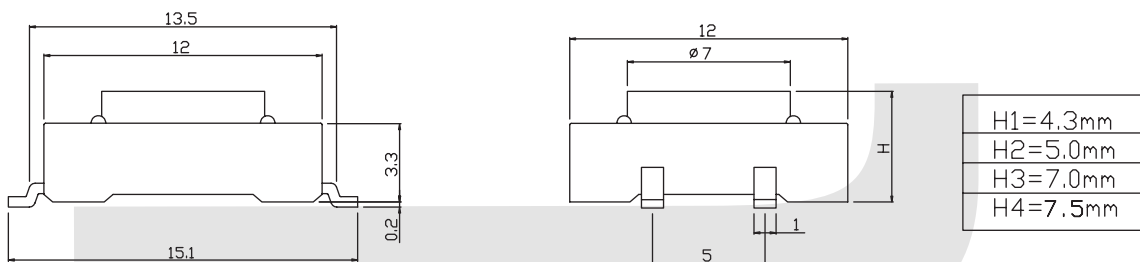


## Tact Switch Series

### KLS7-TS1201 12x12 Tact Switch Series

**ELECTRICAL**

1. Rating: 50mA 12VDC
2. Contact Resistance : 50mΩ max(initial)
3. Insulation Resistance: 100MΩ(minDC 250V)
4. Dielectric Strength : AC250V(50/60Hz for 1minute)
5. Electrically Life: 100000cycles
6. Environment temperature: -20°C~+70°C
7. Operating Force: 180/250(±30gf)
8. Seal temperature: 260°C~ 280°C



## ORDER INFORMATION

**KLS7-TS1201 - H1 - 180 -B**

Part Number

Packing: B=Bulk T=Tape

Operating Force :180~250gf

Hight: H1=4.3mm H2=5.0mm  
H3=7.0mm H4=7.5mm

# Switch

## Tact Switch Series

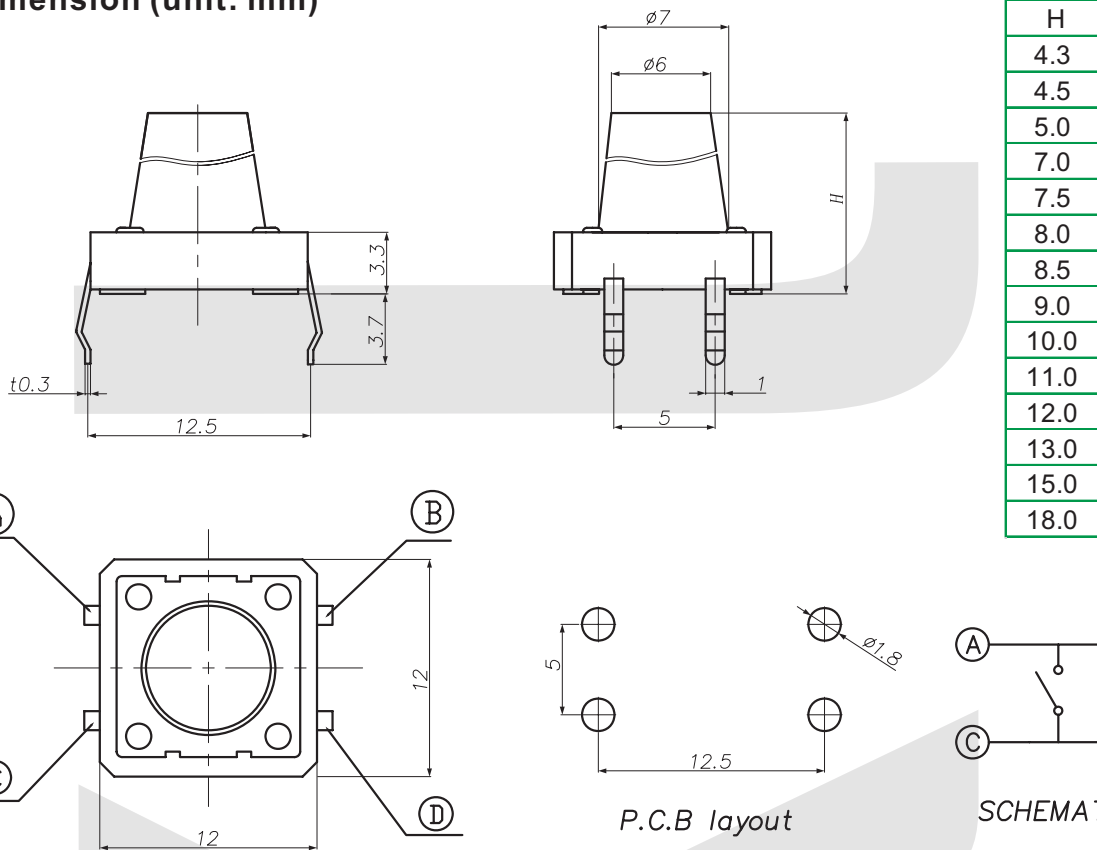
### KLS7-TS1202 12x12 Tact Switch Series

#### ELECTRICAL

1. Rating: 50mA 12VDC
2. Contact Resistance : 50mΩ max(initial)
3. Insulation Resistance: 100MΩ(minDC 250V)
4. Dielectric Strength : AC250V(50/60Hz for 1minute)
5. Electrically Life: 100000cycles
6. Environment temperature: -20°C~+70°C
7. Operating Force: 180/250(±30gf)
8. Seal temperature: 260°C~ 280°C



#### Dimension (unit: mm)



## ORDER INFORMATION

KLS7-TS1202 - 4.3 - 180

Series No.

Operating Force :180~250gf

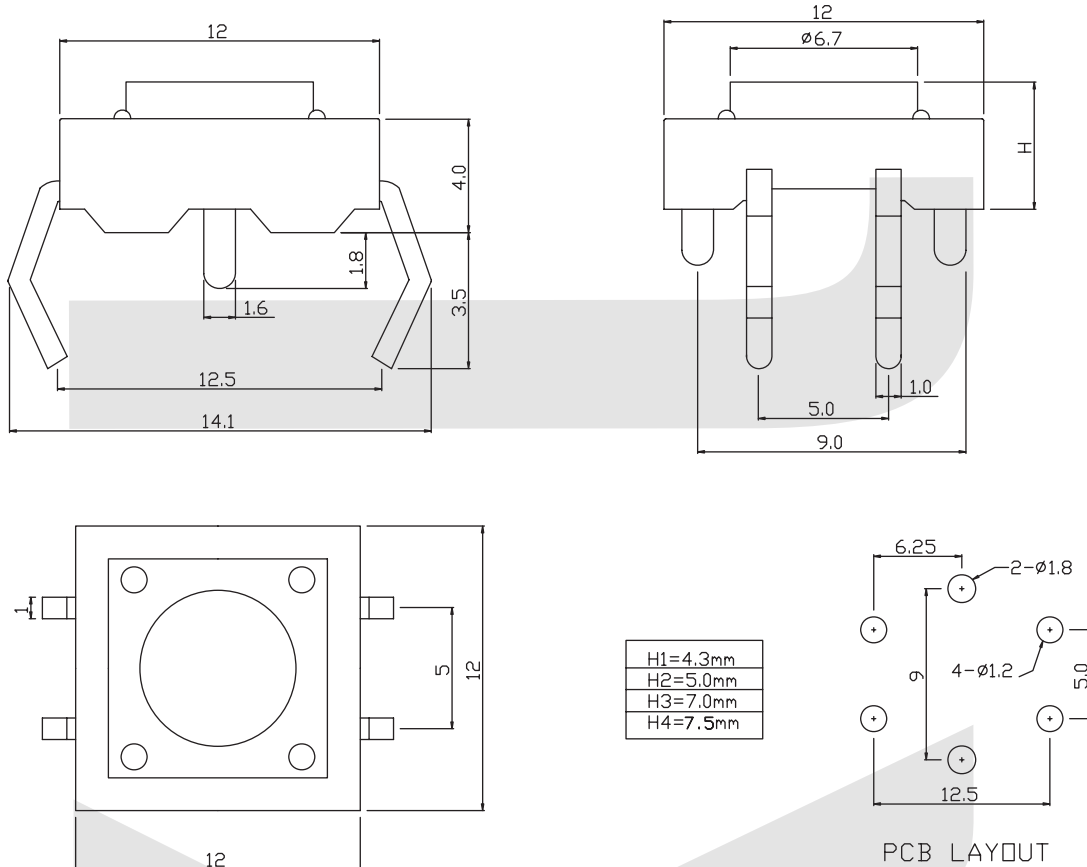
Hight: 4.3mm/4.5mm/5.0mm/7.0mm/  
7.5mm/8.0mm/8.5mm/9.0mm/  
10.0mm/11.0mm/12.0mm/  
13.0mm/15.0mm/18.0mm

## Tact Switch Series

### KLS7-TS1203 12x12 Tact Switch Series

#### ELECTRICAL

1. Rating: 50mA 12VDC
2. Contact Resistance : 50mΩ max(initial)
3. Insulation Resistance: 100MΩ(minDC 250V)
4. Dielectric Strength : AC250V(50/60Hz for 1minute)
5. Electrically Life: 100000cycles
6. Environment temperature: -20°C~+70°C
7. Operating Force: 180/250(±30gf)
8. Seal temperature: 260°C~ 280°C



## ORDER INFORMATION

**KLS7-TS1203 - H1 - 180**

Part Number

Operating Force :180~250gf

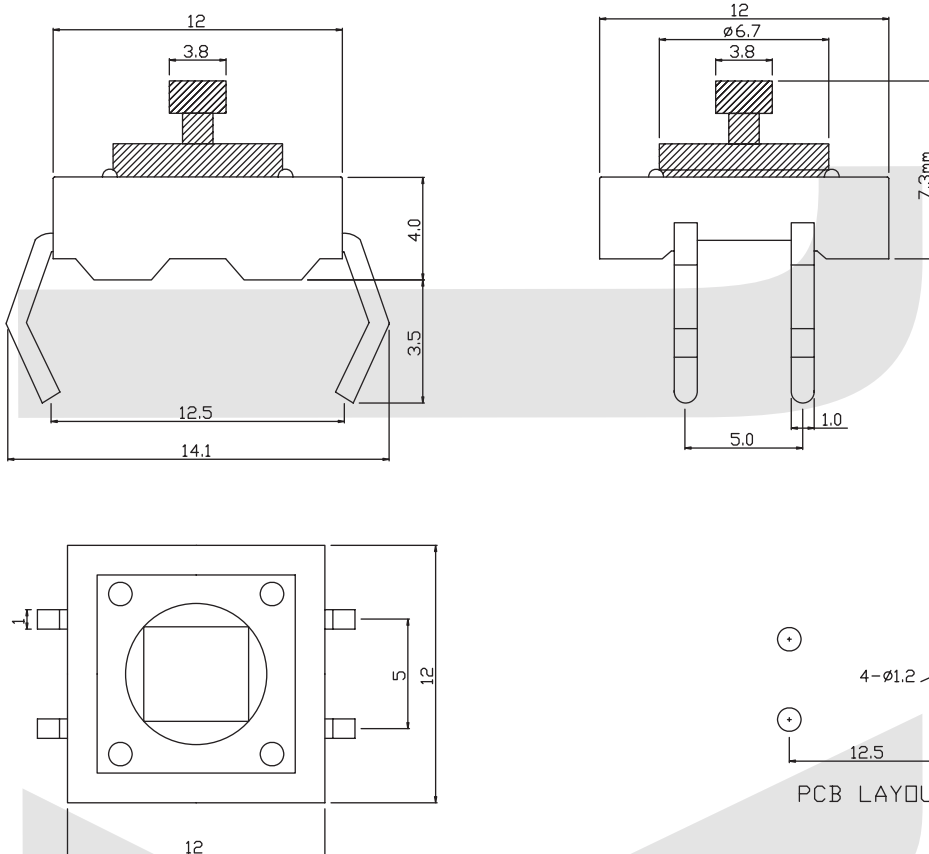
Hight: H1=4.3mm H2=5.0mm  
H3=7.0mm H4=7.5mm

## Tact Switch Series

### KLS7-TS1204 12x12 Tact Switch Series

#### ELECTRICAL

1. Rating: 50mA 12VDC
2. Contact Resistance : 50mΩ max(initial)
3. Insulation Resistance: 100MΩ(minDC 250V)
4. Dielectric Strength : AC250V(50/60Hz for 1minute)
5. Electrically Life: 100000cycles
6. Environment temperature: -20°C~+70°C
7. Operating Force: 180/250(±30gf)
8. Seal temperature: 260°C~ 280°C



## ORDER INFORMATION

**KLS7-TS1204 - H1 - 180**

Part Number

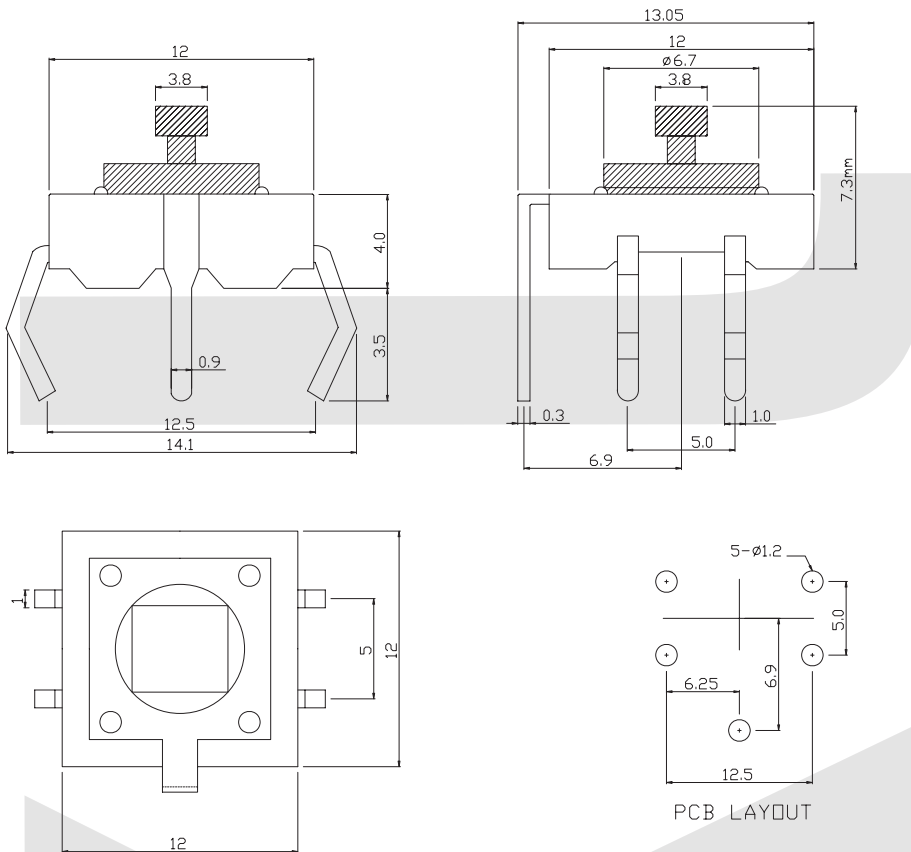
Operating Force : 180~250gf  
Hight: H1=7.3mm

## Tact Switch Series

### KLS7-TS1205 12x12 Tact Switch Series

#### ELECTRICAL

1. Rating: 50mA 12VDC
2. Contact Resistance : 50mΩ max(initial)
3. Insulation Resistance: 100MΩ(minDC 250V)
4. Dielectric Strength : AC250V(50/60Hz for 1minute)
5. Electrically Life: 100000cycles
6. Environment temperature: -20°C~+70°C
7. Operating Force: 180/250(±30gf)
8. Seal temperature: 260°C~ 280°C



## ORDER INFORMATION

**KLS7-TS1205 - H1 - 180**

Part Number

Operating Force :180~250gf  
Hight: H1=7.3mm

# Switch

## Tact Switch Series

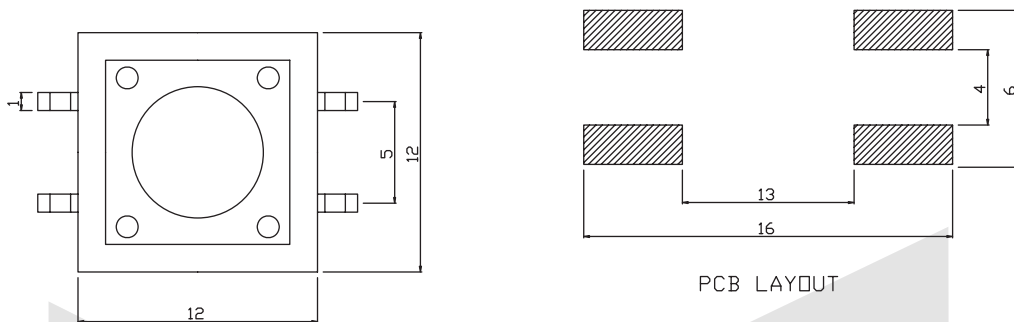
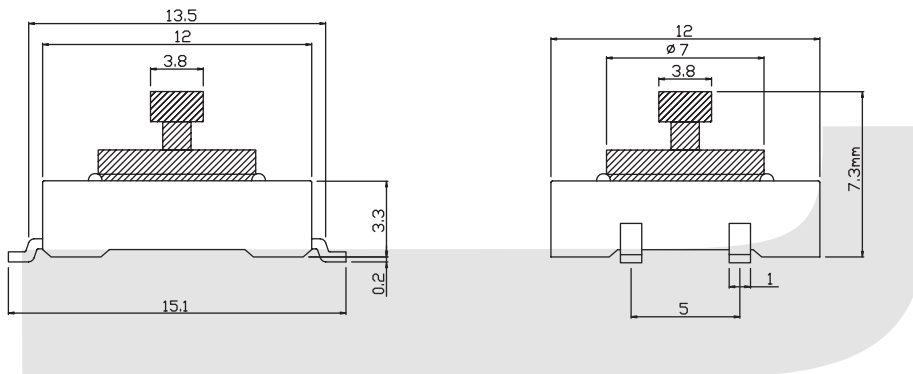
### KLS7-TS1206 12x12 Tact Switch Series

#### ELECTRICAL

- 1.Rating: 50mA 12VDC
- 2.Contact Resistance : 50mΩ max(initial)
- 3.Insulation Resistance: 100MΩ(minDC 250V)
- 4.Dielectric Strength : AC250V(50/60Hz for 1minute)
- 5.Electrically Life: 100000cycles
- 6.Environment temperature:-20°C~+70°C
- 7.Operating Force: 180/250(±30gf)
- 8.Seal temperature:260°C~ 280°C



VII



## ORDER INFORMATION

**KLS7-TS1206 - H1 - 180**

Part Number

Operating Force :180~250gf

Hight: H1=7.3mm

## Tact Switch Series

### KLS7-TS1207 12x12 Tact Switch Series

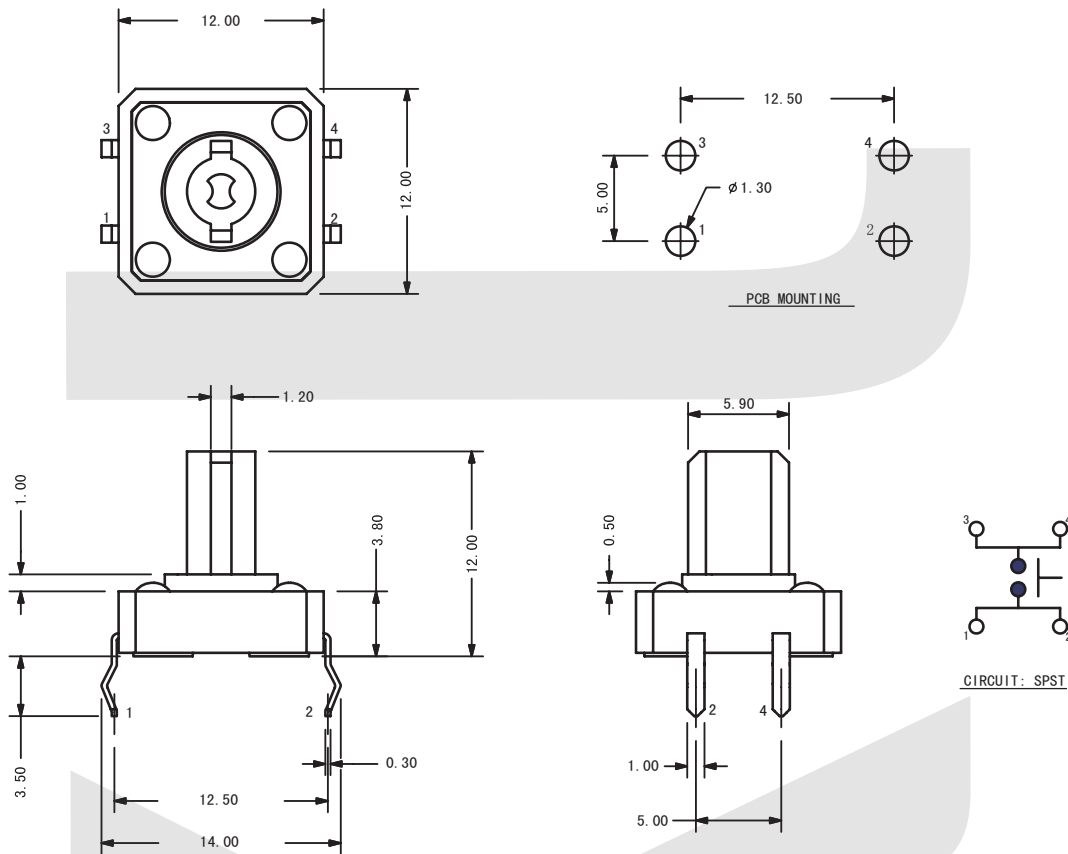
#### ELECTRICAL

1. Rating: 50mA 12VDC
2. Contact Resistance : 50mΩ max(initial)
3. Insulation Resistance: 100MΩ(minDC 250V)
4. Dielectric Strength : AC250V(50/60Hz for 1minute)
5. Electrically Life: 100000cycles
6. Environment temperature: -20°C~+70°C
7. Operating Force: 180/250(±30gf)
8. Seal temperature: 260°C~ 280°C



VII

#### Dimension (unit: mm)



## ORDER INFORMATION

KLS7-TS1207 -12.0 - 180

Series No.

Operating Force : 180~250gf

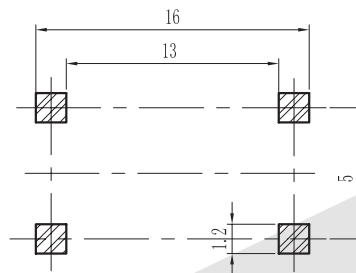
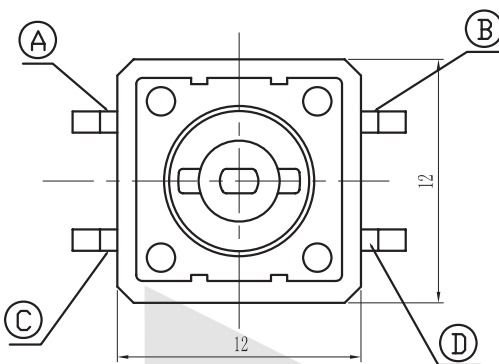
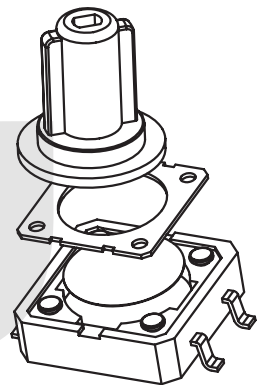
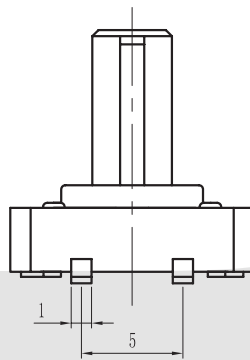
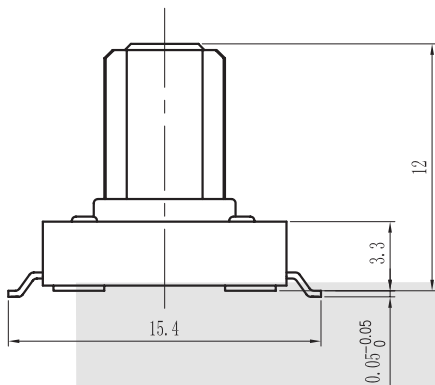
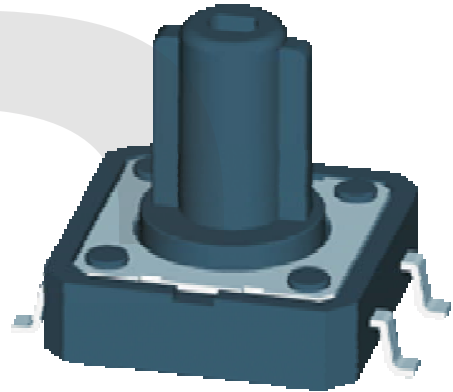
Hight: 12.0mm

**Tact Switch Series**

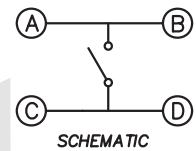
**KLS7-TS1208 12x12 Tact Switch Series**

**ELECTRICAL**

1. Rating: 50mA 12Vdc
2. Contact Resistance : 50mΩ Max.
3. Insulation Resistance: 100MΩ Min.
4. Dielectric Strength : AC250V(50/60Hz for 1minute)
5. Electrically Life: 80, 000cycles
6. Environment temperature: -25°C~+70°C
7. Operating Force: 250/280(±30gf)
8. Seal temperature: 260°C~ 280°C



Recommended P.C.B layout



**ORDER INFORMATION**

**KLS7-TS1208 - H1-250 -B**

Part Number

Packing: B-Bulk  
Operating Force :250~280gf  
Hight: H1 = 12mm

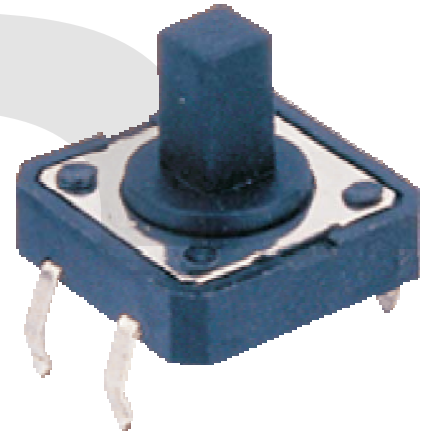


**Tact Switch Series**

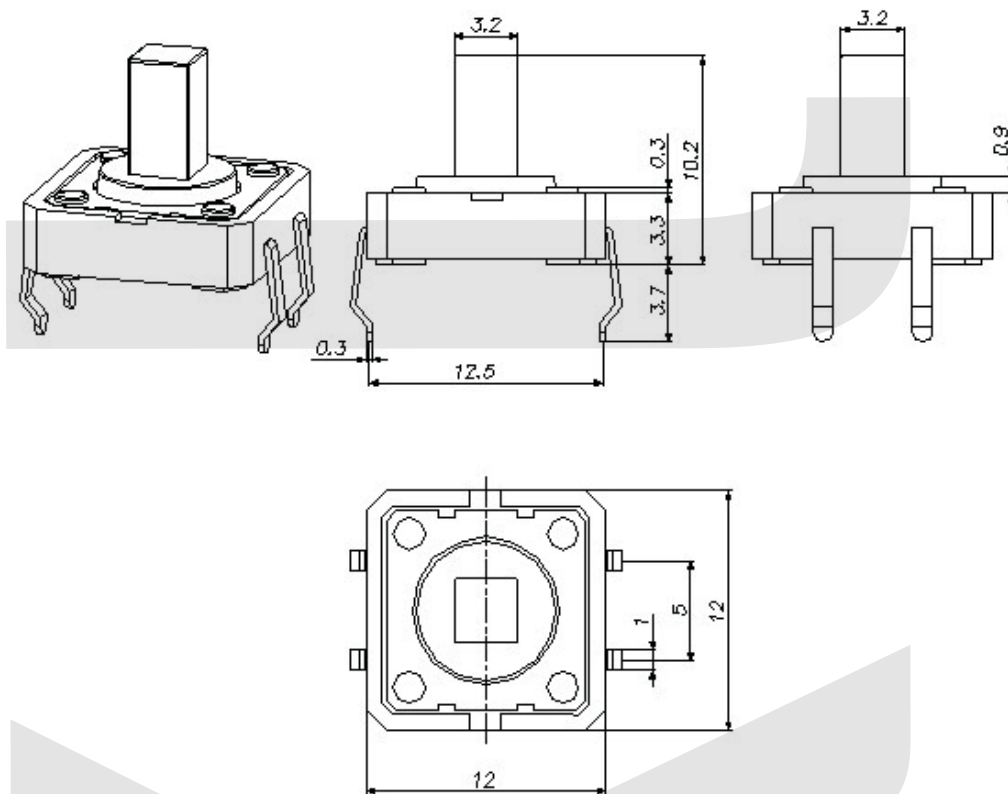
**KLS7-TS1213 12x12 Tact Switch Series**

**ELECTRICAL**

1. Rating: 50mA 12Vdc
2. Contact Resistance : 50mΩ Max.
3. Insulation Resistance: 100MΩ Min.
4. Dielectric Strength : AC250V(50/60Hz for 1minute)
5. Electrically Life: 80, 000cycles
6. Environment temperature: -25°C~+70°C
7. Operating Force: 250/280(±30gf)
8. Seal temperature: 260°C~ 280°C



VII



**ORDER INFORMATION**

**KLS7-TS1213 - H1-250 -B**

Part Number

Packing: B-Bulk

Operating Force :250~280gf

Height: H1 = 10.2mm

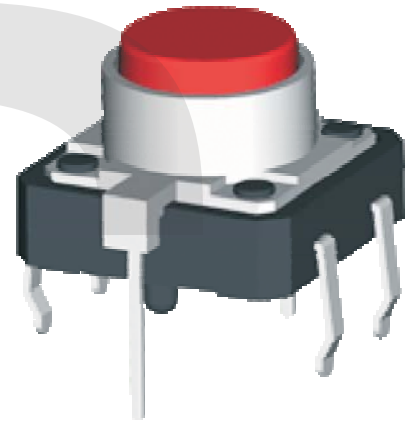
# Switch

## Tact Switch Series

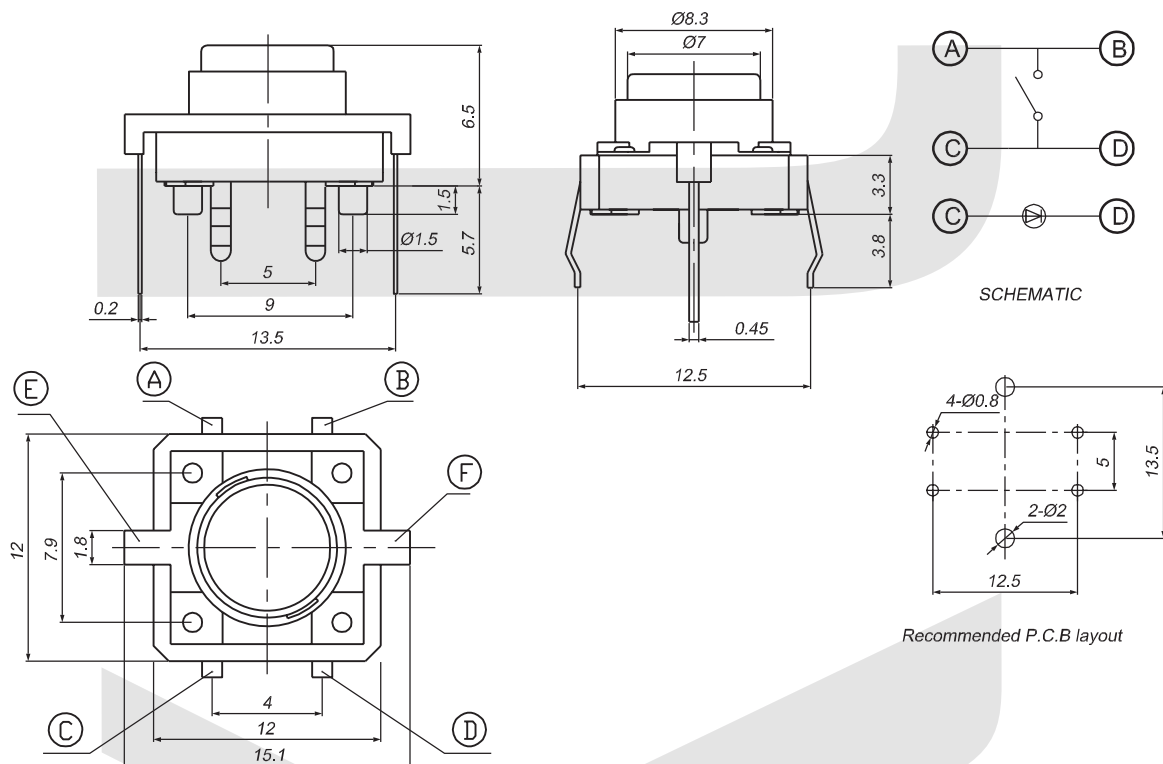
### KLS7-TS1214 12x12mm Tact Switch Series

#### ELECTRICAL

1. Rating: 50mA 12Vdc
2. Contact Resistance : 50mΩ Max.
3. Insulation Resistance: 100MΩ Min.
4. Dielectric Strength : AC250V(50/60Hz for 1minute)
5. Electrically Life: 80, 000cycles
6. Environment temperature: -25°C~+70°C
7. Operating Force: 280±30gf
8. Seal temperature: 260°C~ 280°C



#### Dimension (unit: mm)



## ORDER INFORMATION

**KLS7-TS1214 -6.5-280-R**

Series No.  
High: 6.5mm

Color: R=Red Y=Yellow  
G=Green B=Blue  
Operating Force : 280gf

# Switch

## DIP Switch Series

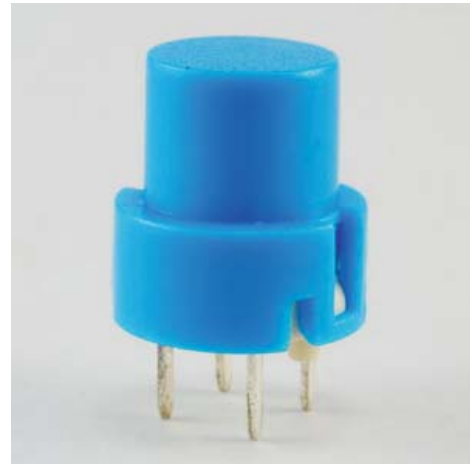
### KLS7-TS1201

#### SPECIFICATIONS

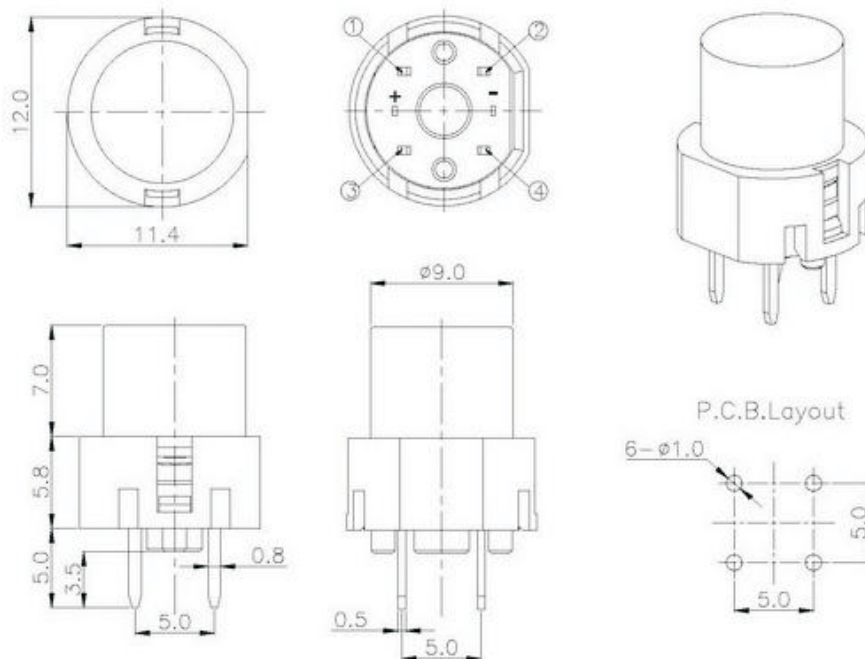
Rating: 1A 125V AC  
DIA: 8mm  
Operating force: 100gf  
Dielectric strength: AC 250 V 1 minute  
Insulation resistance: 100 MΩ DC 250 V  
Contact resistance: 30 MΩ Min.  
Electrical life: 100,000 cycles  
Operating temperature: -20oC ~ +60oC

#### FUNCTION:

OFF-(ON)  
R: 11.4x10.3 mm  
R1: 11.4x12.8 mm  
B-Black G-Gray L- Blue R-Red



VII



## ORDER INFORMATION

# Switch

## DIP Switch Series

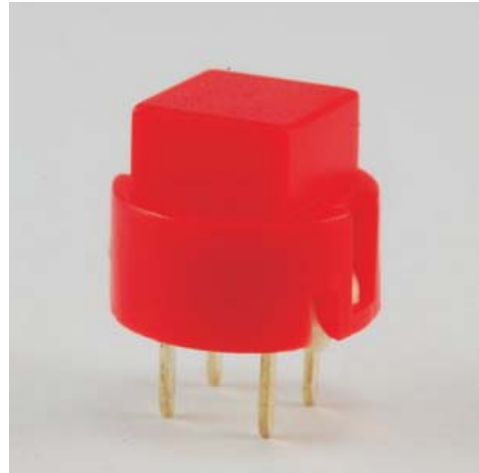
### KLS7-TS1202

#### SPECIFICATIONS

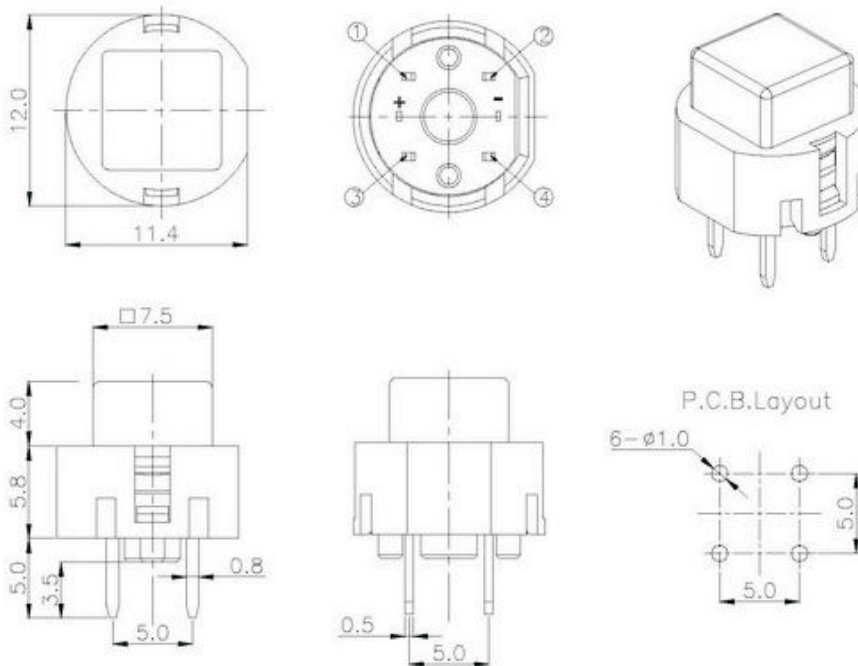
Rating: 1A 125V AC  
DIA: 8mm  
Operating force: 100gf  
Dielectric strength: AC 250 V 1 minute  
Insulation resistance: 100 MΩ DC 250 V  
Contact resistance: 30 MΩ Min.  
Electrical life: 100,000 cycles  
Operating temperature: -20oC ~ +60oC

#### FUNCTION:

OFF-(ON)  
S: 11.4x10.3 mm  
S1: 11.4x9.8 mm  
B-Black G-Gray L-Blue R-Red



VII



## ORDER INFORMATION