

Switch

KLSelectronic
www.cnkls.com

Tact Switch Series

KLS7-TS3601 3x6 Tact Switch Series

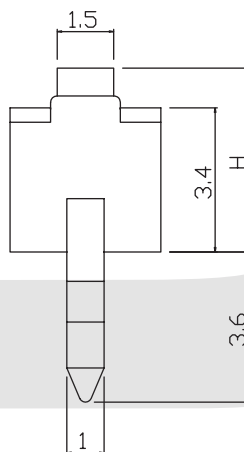
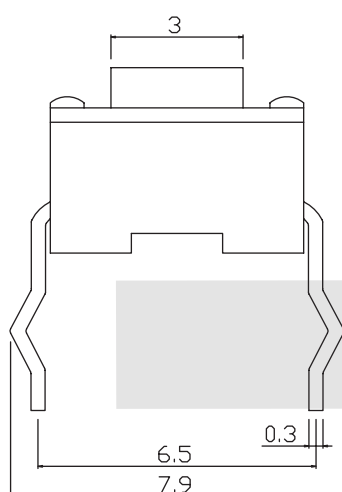
ELECTRICAL

- 1.Rating: 50mA 12VDC
- 2.Contact Resistance : 50mΩ max(initial)
- 3.Insulation Resistance: 100MΩ(minDC 250V)
- 4.Dielectric Strength : AC250V(50/60Hz for 1minute)
- 5.Electrically Life: 100000cycles
- 6.Environment temperature:-30°C~+120°C
- 7.Operating Force: 180/250(±30gf)
- 8.Seal temperature:260°C~ 280°C

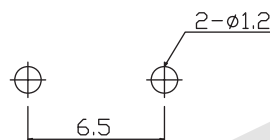
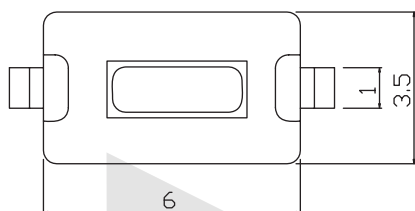


VII

Dimension (unit: mm)



H
4.3
5.0



PCB LAYOUT

ORDER INFORMATION

KLS7-TS3601 - 4.3 - 180

Series No. _____

Operating Force :180~250gf

Hight: 4.3mm / 5.0mm

All specification & dimensions are subject to change,please call your nearest KLS sales representative for update information

Switch

Tact Switch Series

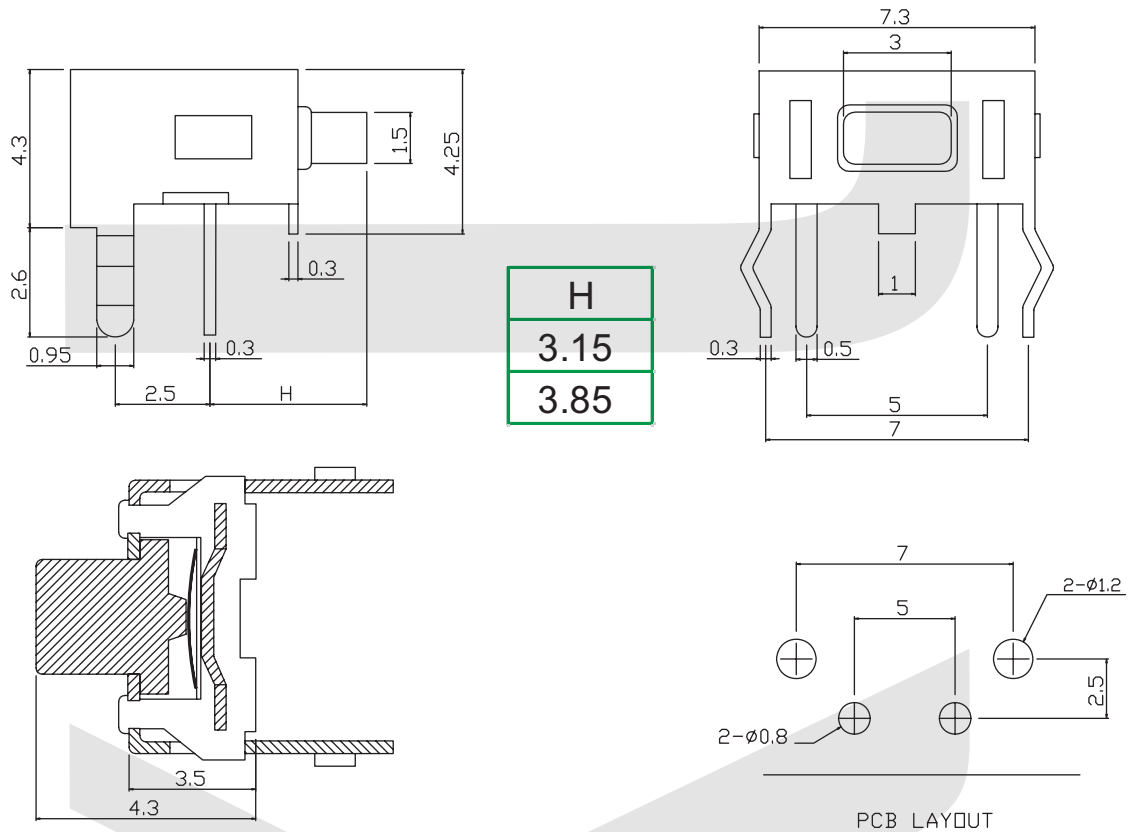
KLS7-TS3602 3x6 Tact Switch Series

ELECTRICAL

1. Rating: 50mA 12VDC
2. Contact Resistance : 50mΩ max(initial)
3. Insulation Resistance: 100MΩ(minDC 250V)
4. Dielectric Strength : AC250V(50/60Hz for 1minute)
5. Electrically Life: 100000cycles
6. Environment temperature: -30°C~+120°C
7. Operating Force: 180/250(±30gf)
8. Seal temperature: 260°C~ 280°C



Dimension (unit: mm)



ORDER INFORMATION

KLS7-TS3602 -3.15-180

Series No. _____ Operating Force :180~250gf
Hight: 3.15mm/3.85mm _____

Switch

Tact Switch Series

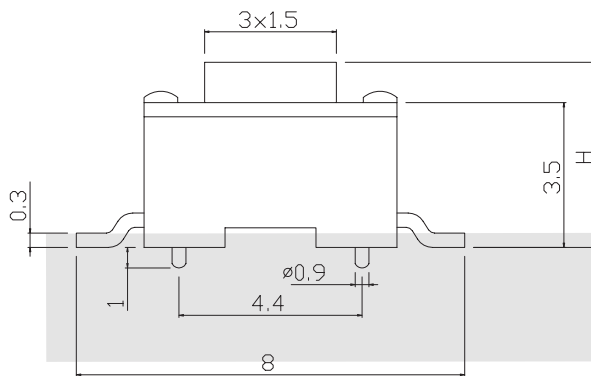
KLS7-TS3603 3x6 Tact Switch Series

ELECTRICAL

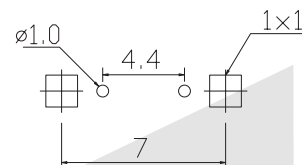
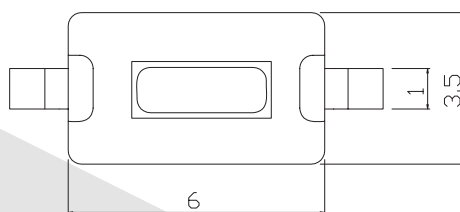
- 1.Rating: 50mA 12VDC
- 2.Contact Resistance : 50mΩ max(initial)
- 3.Insulation Resistance: 100MΩ(minDC 250V)
- 4.Dielectric Strength : AC250V(50/60Hz for 1minute)
- 5.Electrically Life: 100000cycles
- 6.Environment temperature:-30°C~+120°C
- 7.Operating Force: 180/250(±30gf)
- 8.Seal temperature:260°C~ 280°C



Dimension (unit: mm)



H
4.3
5.0



PCB LAYOUT

ORDER INFORMATION

KLS7-TS3603 -4.3-180 -B

Series No. Packing: B=Bulk T=Tape
Hight: 4.3mm/5.0mm Operating Force :180~250gf

Tact Switch Series

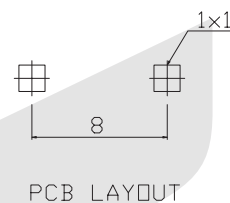
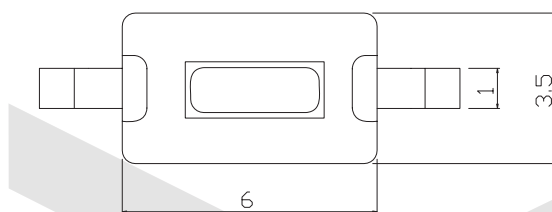
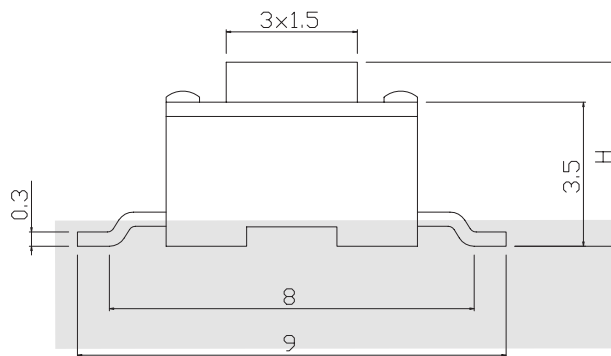
KLS7-TS3603B 3x6 Tact Switch Series

ELECTRICAL

- 1.Rating: 50mA 12VDC
- 2.Contact Resistance : 50mΩ max(initial)
- 3.Insulation Resistance: 100MΩ(minDC 250V)
- 4.Dielectric Strength : AC250V(50/60Hz for 1minute)
- 5.Electrically Life: 100000cycles
- 6.Environment temperature:-30°C~+120°C
- 7.Operating Force: 180/250(±30gf)
- 8.Seal temperature:260°C~ 280°C



Dimension (unit: mm)



ORDER INFORMATION

KLS7-TS3603B -4.3-180 -B

Series No. _____ Packing: B=Bulk T=Tape
Hight: 4.3mm/5.0mm _____ Operating Force :180~250gf

Tact Switch Series

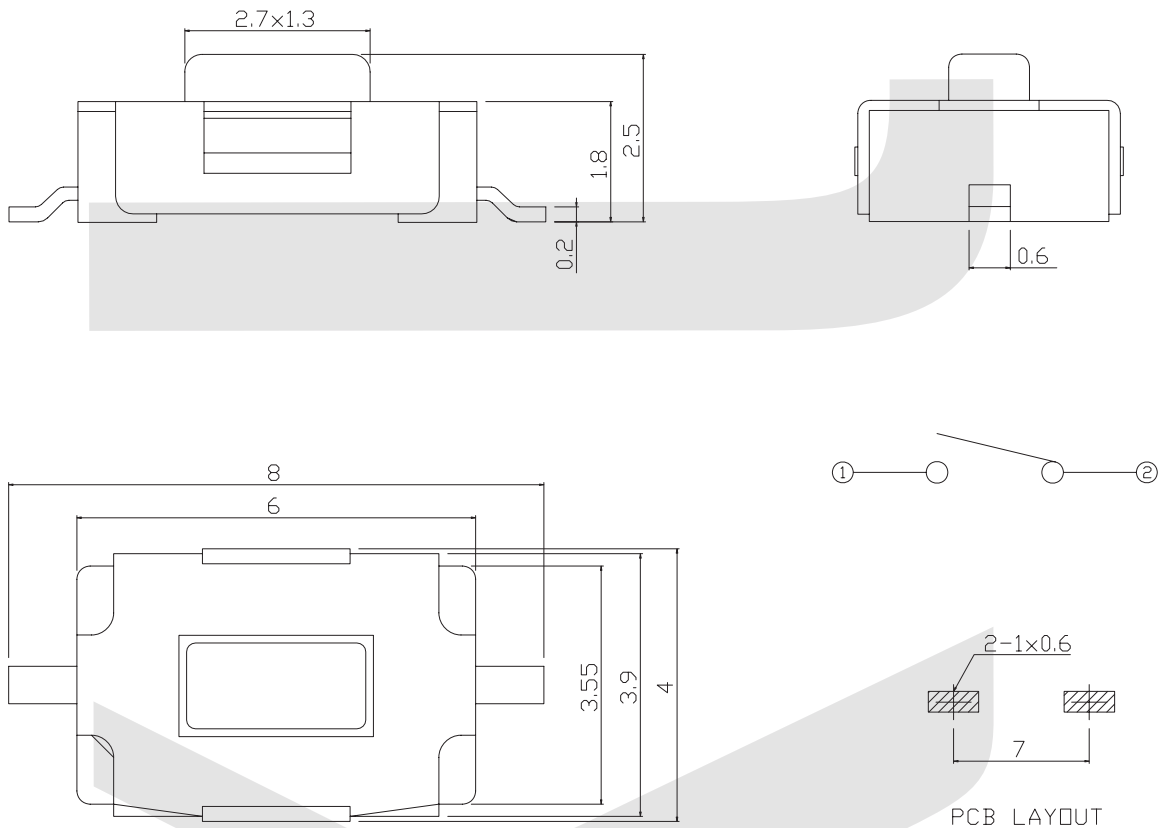
KLS7-TS3605 3x6 Tact Switch Series

ELECTRICAL

1. Rating: 50mA 12VDC
2. Contact Resistance : 50mΩ max(initial)
3. Insulation Resistance: 100MΩ(minDC 250V)
4. Dielectric Strength : AC250V(50/60Hz for 1minute)
5. Electrically Life: 100000cycles
6. Environment temperature:-30°C~+120°C
7. Operating Force: 180/250(±30gf)
8. Seal temperature:260°C~ 280°C



Dimension (unit: mm)



ORDER INFORMATION

KLS7-TS3605 -2.5- 180 -B

Series No.

Height: 2.5mm

Packing: B=Bulk T=Tape

Operating Force :180~250gf

Tact Switch Series

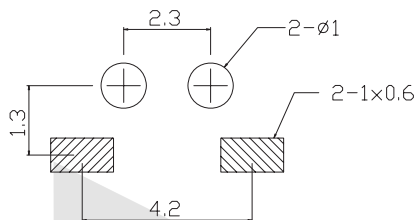
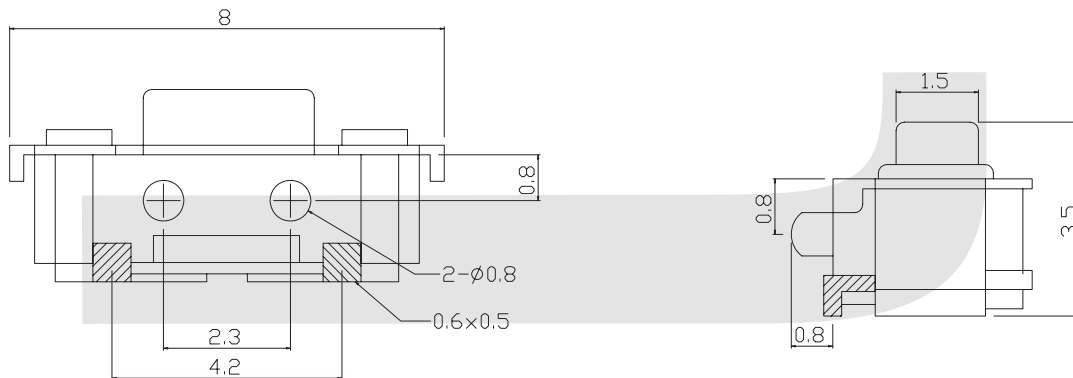
KLS7-TS3606 3x6 Tact Switch Series

ELECTRICAL

- 1.Rating: 50mA 12VDC
- 2.Contact Resistance : 50mΩ max(initial)
- 3.Insulation Resistance: 100MΩ(minDC 250V)
- 4.Dielectric Strength : AC250V(50/60Hz for 1minute)
- 5.Electrically Life: 100000cycles
- 6.Environment temperature:-30°C~+120°C
- 7.Operating Force: 180/250(±30gf)
- 8.Seal temperature:260°C~ 280°C



Dimension (unit: mm)



ORDER INFORMATION

KLS7-TS3606 - 3.5 - 180 -B

Series No.
Height: 3.5mm

Packing: B=Bulk T=Tape
Operating Force :180~250gf

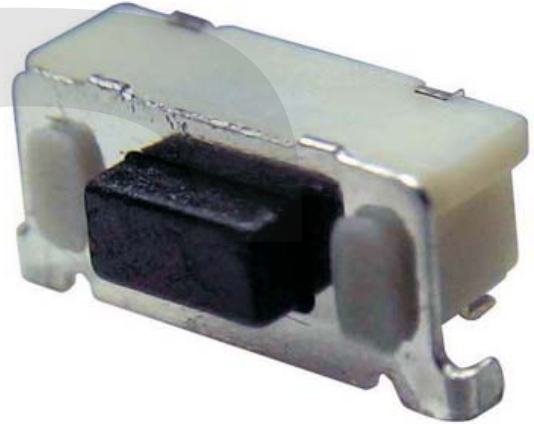
Switch

Tact Switch Series

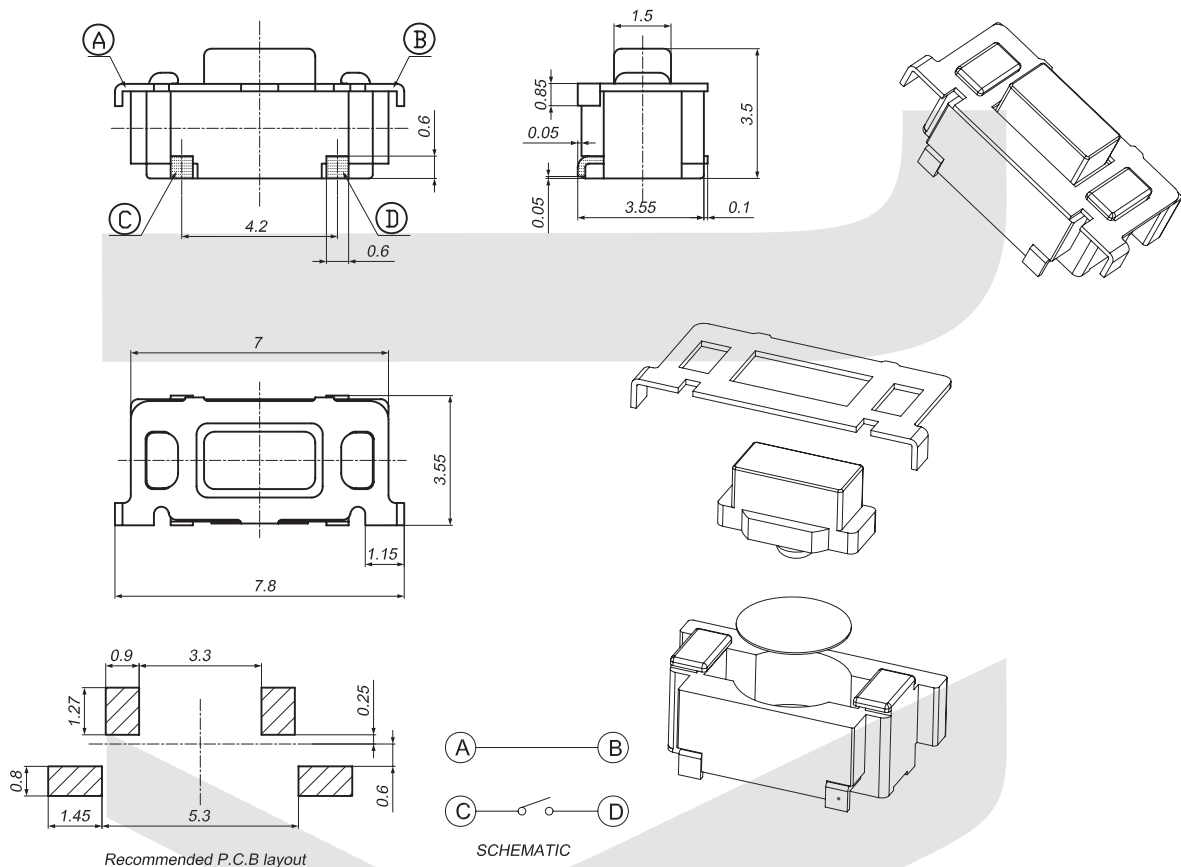
KLS7-TS3606B 3x6 Tact Switch Series

ELECTRICAL

- 1.Rating: 50mA 12VDC
- 2.Contact Resistance : 50mΩ max(initial)
- 3.Insulation Resistance: 100MΩ(minDC 250V)
- 4.Dielectric Strength : AC250V(50/60Hz for 1minute)
- 5.Electrically Life: 50000cycles
- 6.Environment temperature:-25°C~+70°C
- 7.Operating Force: 180/250(±30gf)
- 8.Seal temperature:260°C~ 280°C



Dimension (unit: mm)



ORDER INFORMATION

KLS7-TS3606B - 3.5 - 180 -B

Series No.

Height: 3.5mm

Packing: B=Bulk T=Tape

Operating Force :180~250gf

Tact Switch Series

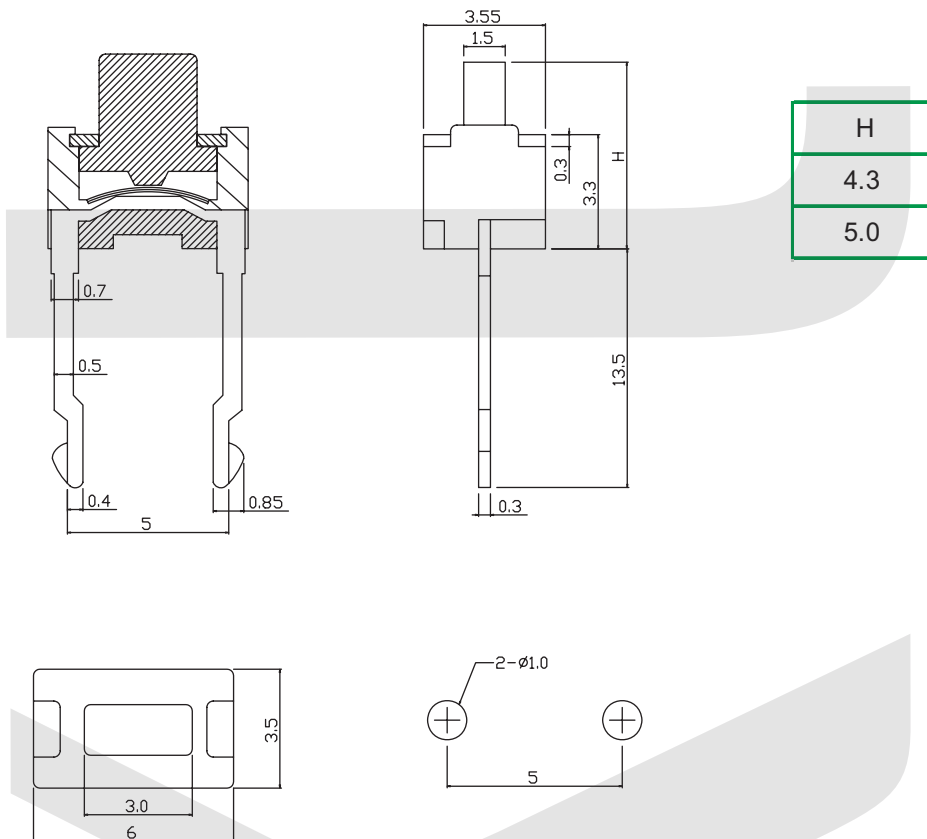
KLS7-TS3607 3x6 Tact Switch Series

ELECTRICAL

- 1.Rating: 50mA 12VDC
- 2.Contact Resistance : 50mΩ max(initial)
- 3.Insulation Resistance: 100MΩ(minDC 250V)
- 4.Dielectric Strength : AC250V(50/60Hz for 1minute)
- 5.Electrically Life: 100000cycles
- 6.Environment temperature:-30°C~+120°C
- 7.Operating Force: 180/250(±30gf)
- 8.Seal temperature:260°C~ 280°C



Dimension (unit: mm)



ORDER INFORMATION

KLS7-TS3607 - 4.3 - 180 -B

Series No. _____

Height: 4.3mm/5.0mm _____

Packing: B=Bulk T=Tape

Operating Force :180~250gf

Tact Switch Series

KLS7-TS3608 3x6 Tact Switch Series

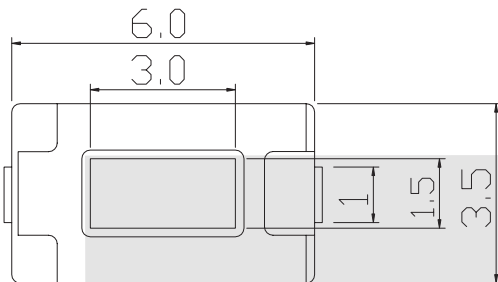
ELECTRICAL

- 1.Rating: 50mA 12VDC
- 2.Contact Resistance : 50mΩ max(initial)
- 3.Insulation Resistance: 100MΩ(minDC 250V)
- 4.Dielectric Strength : AC250V(50/60Hz for 1minute)
- 5.Electrically Life: 100000cycles
- 6.Environment temperature:-20°C~+70°C
- 7.Operating Force: 180/250(±30gf)
- 8.Seal temperature:260°C~ 280°C

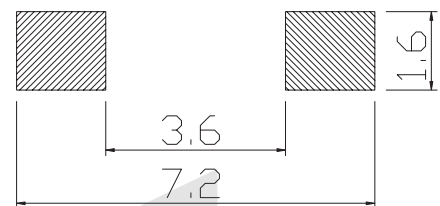
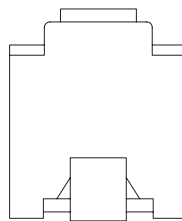
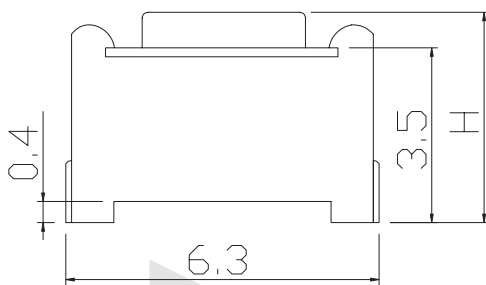


VII

Dimension (unit: mm)



H
4.3
5.0



ORDER INFORMATION

KLS7-TS3608 - 4.3 - 180 -B

Series No.

Hight: 4.3mm/5.0mm

Packing: B=Bulk T=Tape

Operating Force :180~250gf

Switch

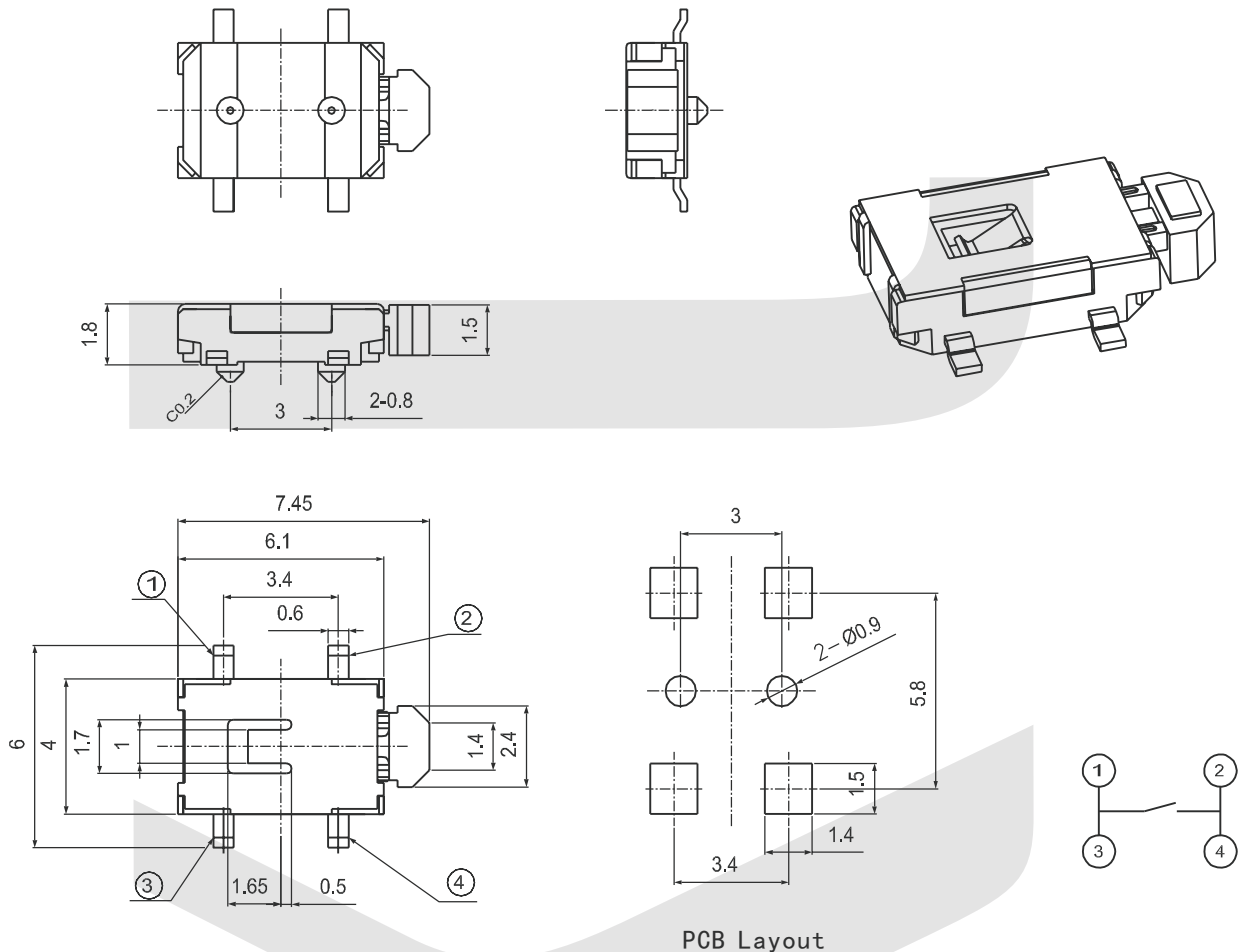
Tact Switch Series

KLS7-TS3609 3x6 Tact Switch Series

ELECTRICAL

- 1.Rating: 50mA 12VDC
- 2.Contact Resistance : 50mΩ max(initial)
- 3.Insulation Resistance: 100MΩ(minDC 250V)
- 4.Dielectric Strength : AC250V(50/60Hz for 1minute)
- 5.Electrically Life: 100000cycles
- 6.Environment temperature:-20°C~+70°C
- 7.Operating Force: 160/220(±30gf)
- 8.Seal temperature:260°C~ 280°C

Dimension (unit: mm)



ORDER INFORMATION

KLS7-TS3609 - 1.8 - 160 - B

Series No.

Height: 1.8mm

Packing: B=Bulk T=Tape

Operating Force :160~220gf

Tact Switch Series

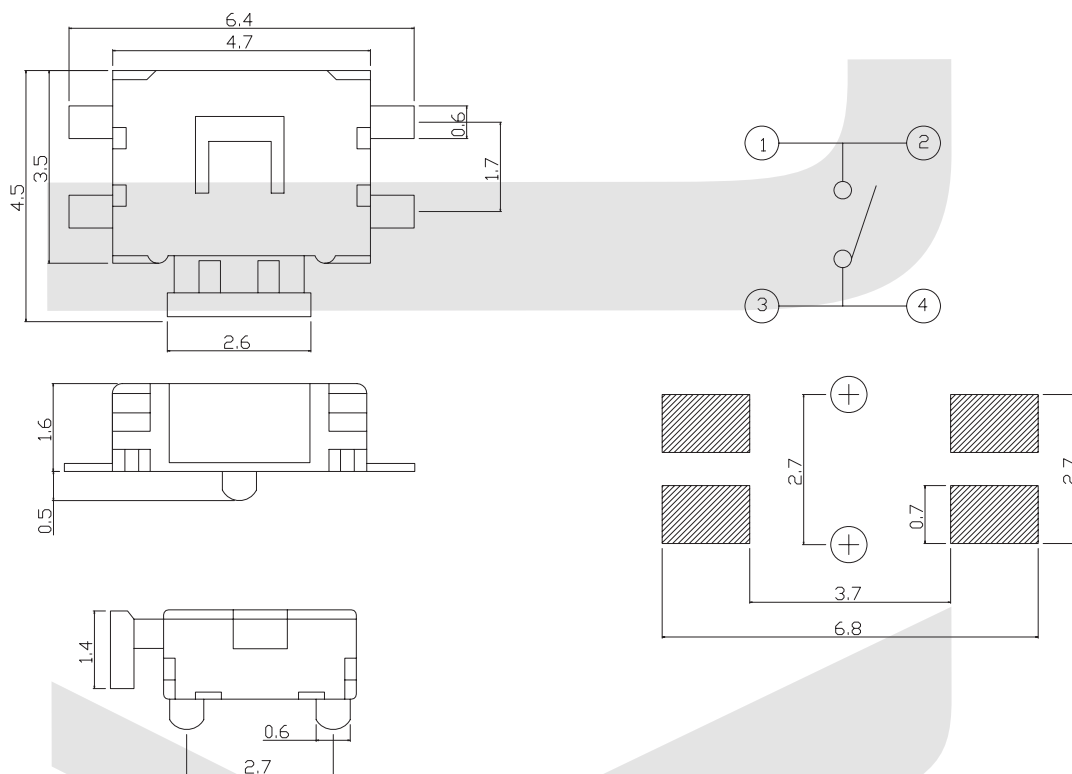
KLS7-TS3610 3x6 Tact Switch Series

ELECTRICAL

- 1.Rating: 50mA 12VDC
- 2.Contact Resistance : 50mΩ max(initial)
- 3.Insulation Resistance: 100MΩ(minDC 250V)
- 4.Dielectric Strength : AC250V(50/60Hz for 1minute)
- 5.Electrically Life: 100000cycles
- 6.Environment temperature:-20°C~+70°C
- 7.Operating Force: 180/250(±30gf)
- 8.Seal temperature:260°C~ 280°C



Dimension (unit: mm)



ORDER INFORMATION

KLS7-TS3610 - 1.6 - 180- B

Series No.

Height: 1.6mm

Packing: B=Bulk T=Tape

Operating Force :180~250gf

Switch

Tact Switch Series

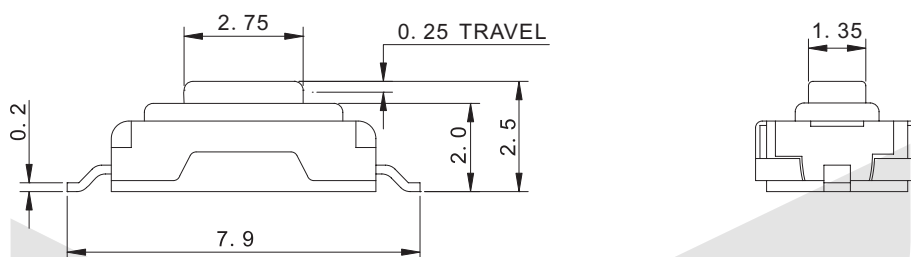
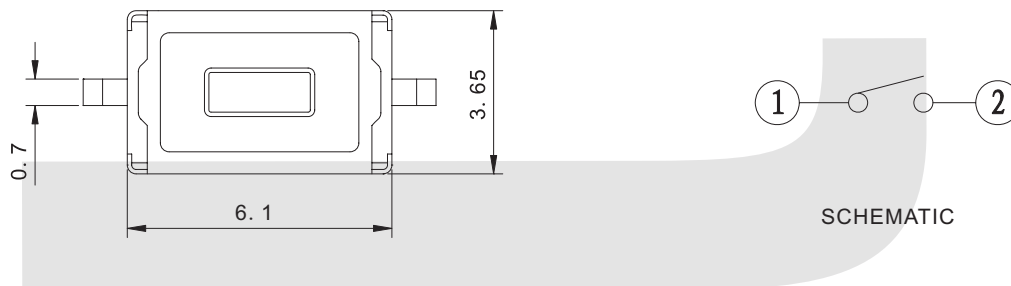
KLS7-TS3611 3x6 SMT Tact Switch Series

ELECTRICAL

- 1.Rating: 50mA 12VDC
- 2.Contact Resistance : 50mΩ max(initial)
- 3.Insulation Resistance: 100MΩ(minDC 250V)
- 4.Dielectric Strength : AC250V(50/60Hz for 1minute)
- 5.Electrically Life: 100000cycles
- 6.Environment temperature:-20°C~+70°C
- 7.Operating Force: 180/250(±30gf)
- 8.Seal temperature:260°C~ 280°C



Dimension (unit: mm)



ORDER INFORMATION

KLS7-TS3611 - 2.5 - 180- B

Series No.
Hight: 2.5mm

Packing: B=Bulk T=Tape
Operating Force :180~250gf

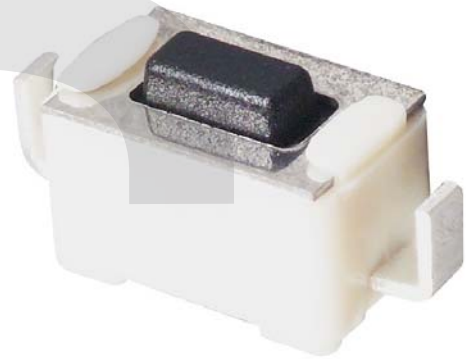
Switch

Tact Switch Series

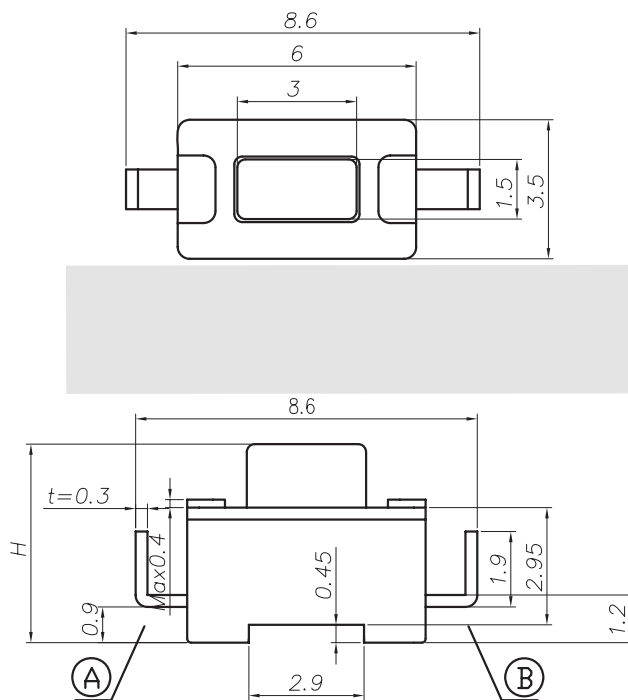
KLS7-TS3612 3x6 Tact Switch Series

ELECTRICAL

- 1.Rating: 20mA 12Vdc
- 2.Contact Resistance : 50mΩ Max.
- 3.Insulation Resistance: 100MΩ Min.
- 4.Dielectric Strength : AC250V(50/60Hz for 1minute)
- 5.Electrically Life: 100, 000cycles
- 6.Environment temperature:-25°C~+70°C
- 7.Operating Force: 160/250(±30gf)
- 8.Seal temperature:260°C~ 280°C



Dimension (unit: mm)



SCHEMATIC

H
4.3
5.0

ORDER INFORMATION

KLS7-TS3612 -4.3-160 -B

Series No.

Hight: 4.3mm/5.0mm

Packing: B-Bulk

Operating Force :160~250gf

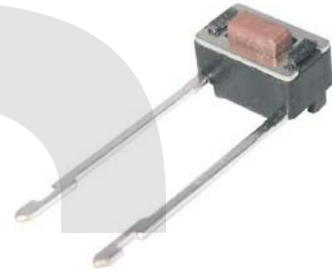
Switch

Tact Switch Series

KLS7-TS3616 3x6 Tact Switch Series

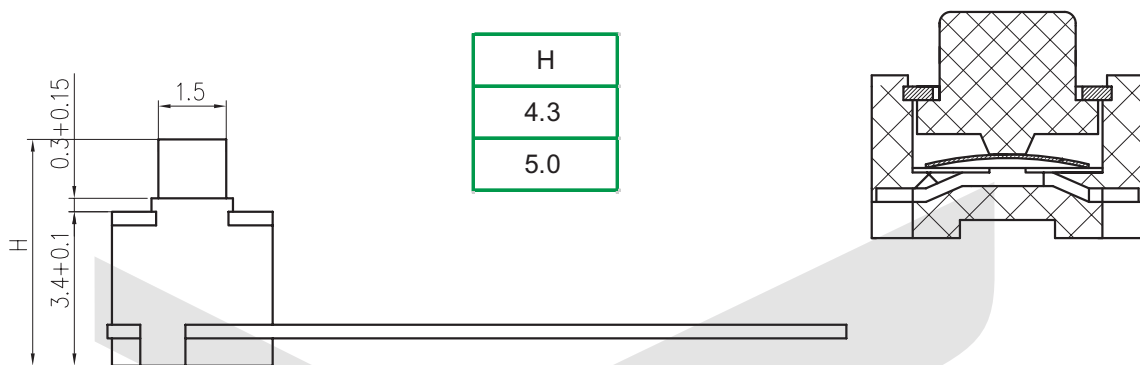
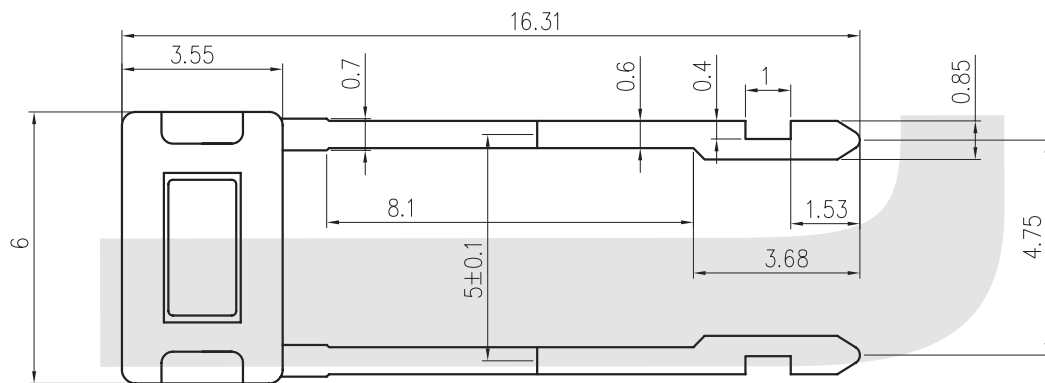
ELECTRICAL

- 1.Rating: 20mA 12Vdc
- 2.Contact Resistance : 50mΩ Max.
- 3.Insulation Resistance: 100MΩ Min.
- 4.Dielectric Strength : AC250V(50/60Hz for 1minute)
- 5.Electrically Life: 100, 000cycles
- 6.Environment temperature:-25°C~+70°C
- 7.Operating Force: 160/250(±30gf)
- 8.Seal temperature:260°C~ 280°C



VII

Dimension (unit: mm)



ORDER INFORMATION

KLS7-TS3616 -4.3-160 -B

Series No. _____

Hight: 4.3mm/5.0mm

Packing: B-Bulk

Operating Force :160~250gf